

CONFIDENTIAL – DO NOT COPY



CONDITIONS OF USE:

If you are unsure of product and accessory pairing, please reference the products and/or product accessories pages on our website or contact: **CustomerService@Dairyland.com**.

A complete purchase order contains all necessary information for shipment, including:

- Bracket dimensional data, if applicable.
- Confirmation of **End Use Destination (Country and state if available)**.
- Delivery contact for pedestal purchases (name and phone number).

Purchase Orders that include items not listed or in greater quantities than allowed for in the published price list require a quote to establish price and lead time.

US partners may use these published lists for domestic quotation and sale only. Our international partners may use these forms to sell within their stated territories as specified in their partner agreement.

End Destination, End User (Customer), Project Name and Application should be supplied when order is placed.

Access is obtained only through the website and never printed. Distribution of this document to others outside your company or credential sharing is expressly prohibited.

Dairyland reserves the right to:

- Decline any orders that do not comply with the above requirements.
- Decline any orders for which the product use/application is inappropriate.
- Discontinue or modify pricing at any time with a 30 day notice.

Important Information regarding FMFB, MTF, and UFB Flange Mounting Kits are included at the end of the pricelist.

**\*\*\*IMPORTANT NOTE REGARDING LEAD TIMES\*\*\***

**The lead times supplied on this document are approximations. They are subject to change and variation depending on product availability, current manufacturing workload, and date/time of order submission. If an order is urgent or time sensitive, contact **CustomerService@Dairyland.com** for the most current and up-to-date lead time.**

# CONFIDENTIAL – DO NOT COPY

DAIRYLAND Price List - <b>SSD</b> Product Family				
Effective May 2024				
Dairyland Item No	Dairyland Item Description	Qty Up To For Standard 3-4 Business Day Lead Time	List Price	Your Price
2966	SSD-2/2-1.2-100-R	25	\$800	\$640
2969	SSD-3/1-1.2-100-R	25	\$836	\$669
2974	SSD-2/2-2.0-100-R	25	\$1,080	\$864
2983	SSD-3/1-2.0-100-R	25	\$1,133	\$907
2968	SSD-2/2-3.7-100-R	25	\$1,414	\$1,132
2970	SSD-3/1-3.7-100-R	25	\$1,486	\$1,189
2973	SSD-2/2-5.0-100-R	25	\$1,947	\$1,558
3311	SSD-3/1-5.0-100-R	25	\$2,024	\$1,620
SSD Accessories				
4856	MTF Generic 0.50-2.89	25	\$137	\$117
2589	MTS-M8	25	\$39	\$34
2916	WTM-S	25	\$91	\$78
3442	MTR-1 for SSD	25	\$69	\$59

DAIRYLAND Price List - <b>PCR</b> Product Family				
Effective May 2024				
Dairyland Item No	Dairyland Item Description	Qty Up To For Standard 4-5 Business Day Lead Time	List Price	Your Price
2694	PCR-3.7KA	20	\$1,834	\$1,559
2692-1	PCR-5KA	20	\$2,271	\$1,931
1603	PCR-10KA	20	\$2,655	\$2,257
1607	PCR-15KA	20	\$4,418	\$3,756
PCR Accessories				
4852	UFB Generic 0.50-2.89	20	\$219	\$187
2916	WTM-S	20	\$91	\$78
1763	AP (small)	20	\$131	\$112
3046	MTR-3 for PCR	25	\$121	\$103

\*Standard PCR models only - additional customizations require a quote from Customer Service.

# CONFIDENTIAL – DO NOT COPY

<b>DAIRYLAND Price List - PCRH Product Family</b>				
<b>Effective May 2024</b>				
Dairyland Item No	Dairyland Item Description	Qty Up To For Standard 4-5 Business Day Lead Time	List Price	Your Price
1629-1	PCRH-3.7KA-BCD	5	\$3,502	\$2,977
PCRH Accessories				
2019	ACL-18"-X Leads	5	\$174	\$148
2928	RACL-18"-X Leads	5	\$174	\$148

<b>DAIRYLAND Price List - PCRX Product Family</b>				
<b>Effective May 2024</b>				
Dairyland Item No	Dairyland Item Description	Qty Up To For Standard 4-5 Business Day Lead Time	List Price	Your Price
4780-2	PCRX-5KA-5.5/2.5	10	\$5,136	\$4,623
4781-2	PCRX-5KA-4.5/3.5	10	\$5,136	\$4,623
4782-3	PCRX-10KA-5.5/2.5	10	\$6,453	\$5,808
4783-3	PCRX-10KA-4.5/3.5	10	\$6,453	\$5,808
4784-2	PCRX-15KA-5.5/2.5	10	\$8,474	\$7,627
4785-2	PCRX-15KA-4.5/3.5	10	\$8,474	\$7,627
PCRX Accessories				
4872	PCRX Isolation Kit	5	\$121	\$103

<b>DAIRYLAND Price List - OVP Product Family</b>				
<b>Effective May 2024</b>				
Dairyland Item No	Dairyland Item Description	Qty Up To For Standard 3-4 Business Day Lead Time	List Price	Your Price
2110	OVP-2/2-3.7-100	25	\$1,329	\$1,130
1642	OVP-3/1-3.7-100	25	\$1,329	\$1,130
OVP Flange Mounting Kits				
4854	FMFB Generic 0.50-2.89	25	\$137	\$117

# CONFIDENTIAL – DO NOT COPY

DAIRYLAND Price List - SWX				
Effective May 2024				
Dairyland Item No	Dairyland Item Description	Qty Up To For Standard 3-4 Business Day Lead Time	List Price	Your Price
3569	SWX-100-PED	25	\$734	\$624
4106	SWX-100-INT-SSD	25	\$815	\$693
4107	SWX-100-INT-PCR	25	\$851	\$724
SWX Accessories				
3566	MTL-2-32-SWS	25	\$179	\$153
3565	MTL-2-32-SWP	25	\$179	\$153
3604	MTL-2/0-32-SWP	25	\$185	\$158
3135	BCL-1/0	5	\$133	\$114

\*For configurations and ordering instructions, see the information at the end of this document.

DAIRYLAND Price List - Enclosure Accessories				
Effective May 2024				
Dairyland Item No	Dairyland Item Description	Qty Up To For Standard 3-5 Business Day Lead Time	List Price	Your Price
1818	MTP-36	50	\$512	\$436
1800	Vault 12x12	10	\$641	\$545
3163	ENCL1816*	10	\$336	\$286
3847	ENCL2424	10	\$726	\$618

\*PCR's do not fit inside of our ENCL1816. Please use the ENCL2424 instead.

### FMFB, MTF, and UFB Flange Mounting Kits:

The Generic versions of each kit are for pricing purposes only. They are not actual items that can be ordered. In order to properly size the flange mounting kits, we require the ANSI# Class and Nominal Pipe Diameter or the Bolt Hole Size.

Here is a breakdown of the 10 kit sizes for each flange family:

FMFB KIT SIZES (OVP SPECIFIC)			MTF KIT SIZES (SSD/OVP2)			UFB KIT SIZES (PCR)		
Kit #	Order Designation	Bolt Hole Dia.	Kit #	Order Designation	Bolt Hole Dia.	Kit #	Order Designation	Bolt Hole Dia.
4794-1	FMFB-0.50-0.75	0.50-0.75	4824-1	MTF-0.50-0.75	0.50-0.75	4792-1	UFB-0.50-0.75	0.50-0.75
4794-2	FMFB-0.76-0.94	0.76-0.94	4824-2	MTF-0.76-0.94	0.76-0.94	4792-2	UFB-0.76-0.94	0.76-0.94
4794-3	FMFB-0.95-1.12	0.95-1.12	4824-3	MTF-0.95-1.12	0.95-1.12	4792-3	UFB-0.95-1.12	0.95-1.12
4794-4	FMFB-1.13-1.38	1.13-1.38	4824-4	MTF-1.13-1.38	1.13-1.38	4792-4	UFB-1.13-1.38	1.13-1.38
4794-5	FMFB-1.39-1.63	1.39-1.63	4824-5	MTF-1.39-1.63	1.39-1.63	4792-5	UFB-1.39-1.63	1.39-1.63
4794-6	FMFB-1.64-1.88	1.64-1.88	4824-6	MTF-1.64-1.88	1.64-1.88	4792-6	UFB-1.64-1.88	1.64-1.88
4794-7	FMFB-1.89-2.12	1.89-2.12	4824-7	MTF-1.89-2.12	1.89-2.12	4792-7	UFB-1.89-2.12	1.89-2.12
4794-8	FMFB-2.13-2.38	2.13-2.38	4824-8	MTF-2.13-2.38	2.13-2.38	4792-8	UFB-2.13-2.38	2.13-2.38
4794-9	FMFB-2.39-2.63	2.39-2.63	4824-9	MTF-2.39-2.63	2.39-2.63	4792-9	UFB-2.39-2.63	2.39-2.63
4794-10	FMFB-2.64-2.89	2.64-2.89	4824-10	MTF-2.64-2.89	2.64-2.89	4792-10	UFB-2.64-2.89	2.64-2.89

## Switch Configurations and Ordering Instructions

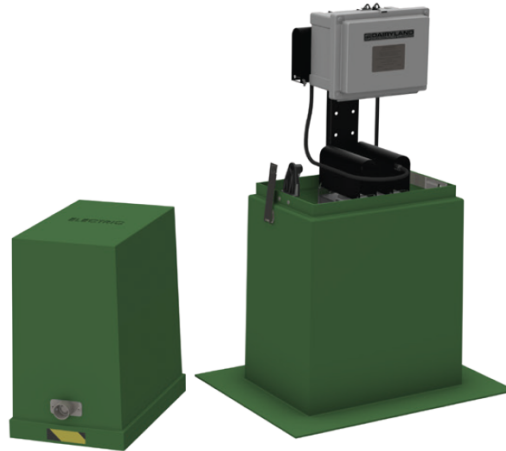


### EXTERNAL MOUNTING

For external pedestal mounting with any SSD, PCR, or PCRX model

#### Ordering Instructions:

- SSD, PCR, or PCRX
- MTP-36
- SWX-100-PED
- Lead Kit (Choose One)
  - MTL-2-32-SWS (SSD)
  - MTL-2-32-SWP (PCR/PCRX  $\leq 10\text{kA}$ )
  - MTL-2/0-32-SWP (PCR/PCRX 15kA)



### INTERNAL MOUNTING

#### 36" PEDESTAL

For internal pedestal mounting in the MTP-36 with an SSD or PCR\*\*

#### Ordering Instructions:

- SSD
- MTP-36
- SWX-100-INT-SSD
- OR-**
- PCR
- MTP-36
- SWX-100-INT-PCR