

**ORDERING INSTRUCTIONS:**

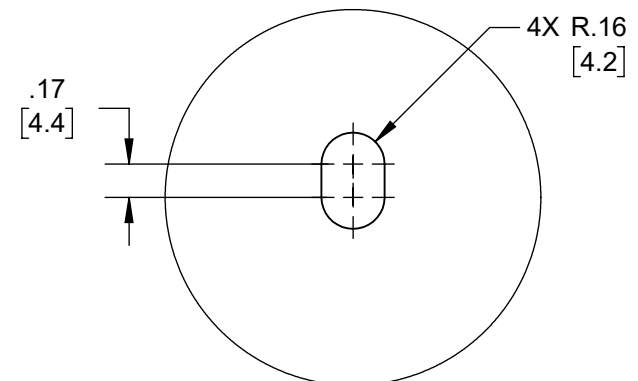
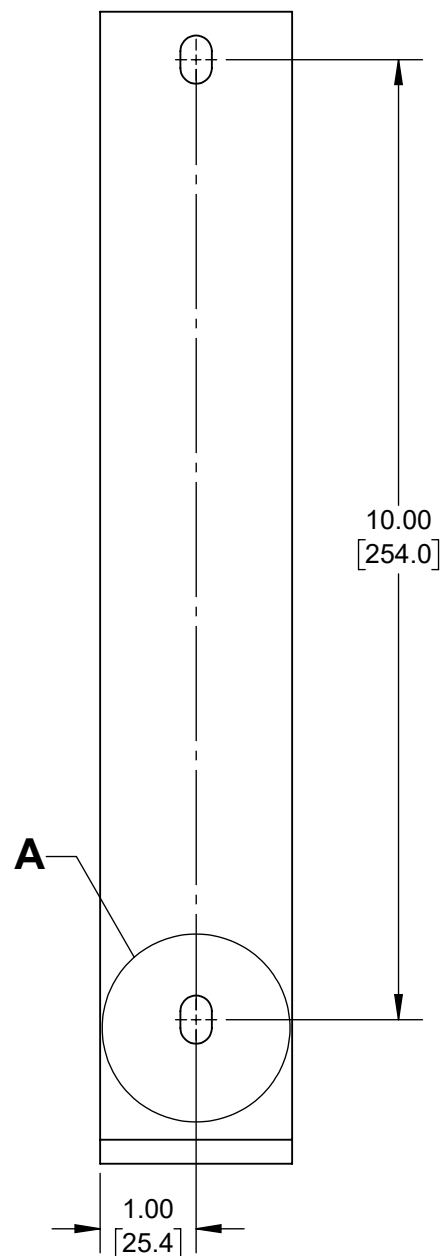
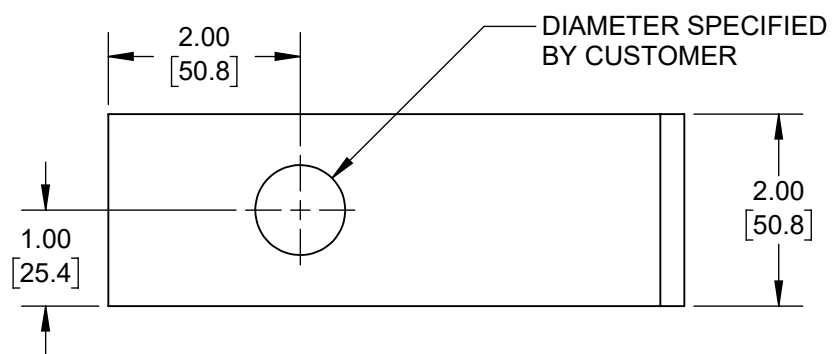
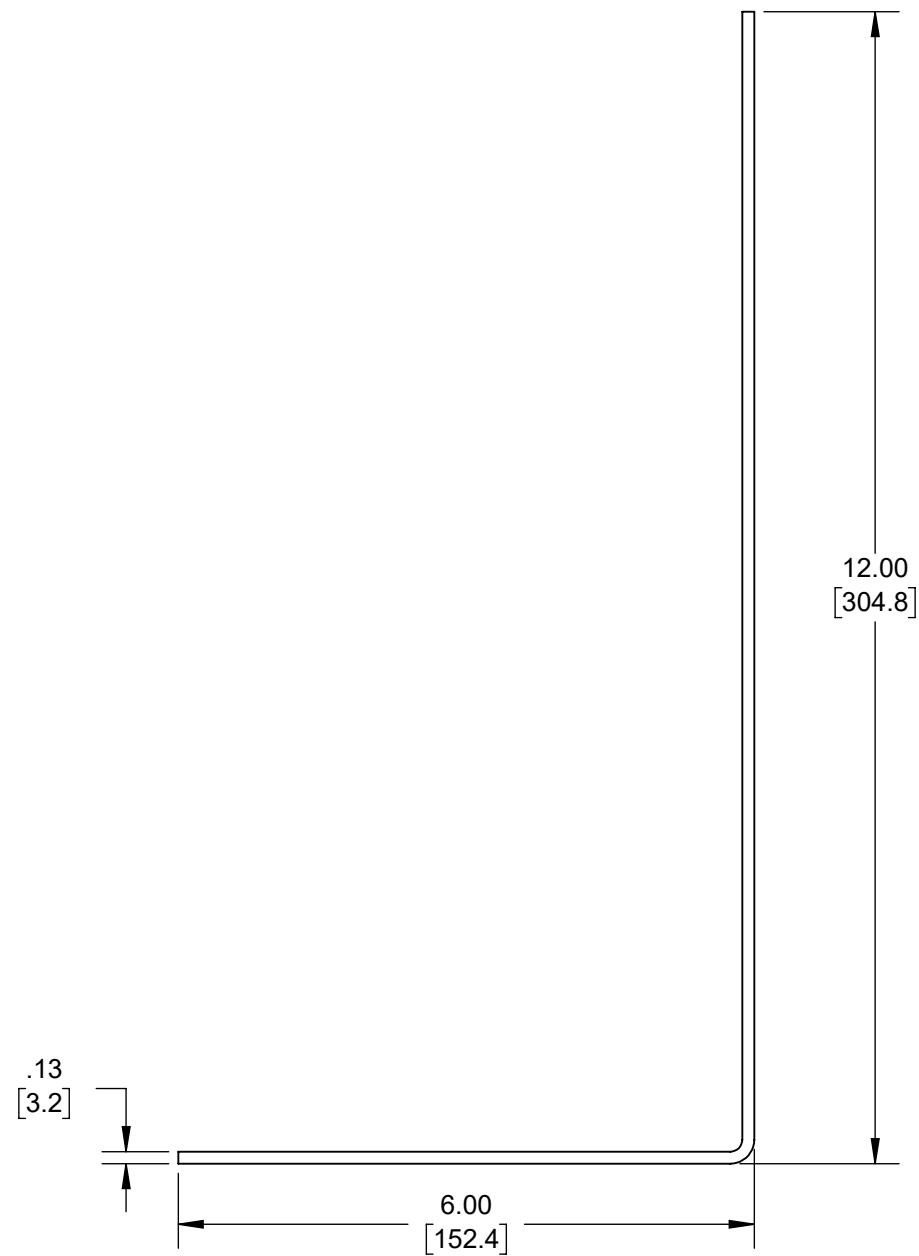
1. REQUIRES SSD MODELS WITH NON -R TERMINAL ARRANGEMENT.
2. MOUNTING HOLE DIAMETER TO BE SPECIFIED BY CUSTOMER.

LINE NO.	DESCRIPTION	QTY.
1	BRACKET MOUNTING ACTUATOR	1
2	NUT HEX COUPLING SSD/OVP2 PLATED	1
3	WASHER FLAT 5/16"	3
4	WASHER SPLIT LOCK 5/16"	3
5	SCREW HEX M8-1.25X16MM	2
6	SCREW HEX 5/16-18X1"	1
7	NUT HEX 5/16-18	1
8	TEF-GEL	1

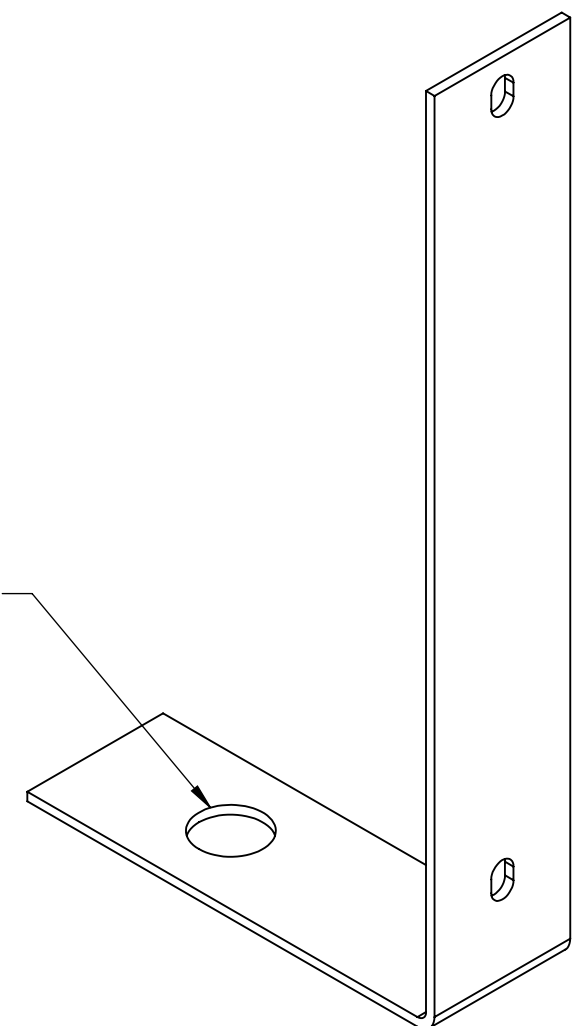
ASME Y14.5M 2018 APPLIES 	MATERIAL: <b>NA</b>	DRAWN: <b>SVS</b>	DATE DRAWN: <b>2017-11-08</b>	 <b>DAIRYLAND ELECTRICAL INDUSTRIES, INC.</b> P.O. BOX 187 STOUGHTON, WI 53589 608-877-9900 DAIRYLAND.COM
UNLESS OTHERWISE SPECIFIED DIMENSIONS ARE IN INCHES. COMPUTER-GENERATED DRAWING DO NOT EDIT MANUALLY.	FINISH: <b>NA</b>	DWG APPROVAL: <b>RJH</b>	DATE APPROVAL: <b>03/02/2022</b>	
.XXX = ±.005" .XX = ±.01" .X = ±.03" ANGLES = ±1°		TITLE: <b>SSD INSTALLATION ON ACTUATORS</b>		
THE INFORMATION CONTAINED IN THIS DRAWING IS THE SOLE PROPERTY OF DAIRYLAND ELECTRICAL INDUSTRIES, INC. ANY REPRODUCTION IN PART OR WHOLE, WITHOUT THE WRITTEN PERMISSION OF DAIRYLAND ELECTRICAL INDUSTRIES, INC. IS PROHIBITED.		SHEET: <b>1</b> OF <b>2</b>	DWG SIZE: <b>B</b>	SCALE: <b>1:2</b>
		REV: <b>B</b>	PART #: <b>100109</b>	

**NOTE:**

1. APPLY A THIN LAYER OF TEFGEL TO ALL METAL-TO-METAL INTERFACES BEFORE ASSEMBLY.
2. "ITEM 8" NOT SHOWN ON DRAWING.



HOLE FOR MOUNTING BRACKET TO ACTUATOR MAY NEED TO BE ENLARGED DEPENDING ON SPECIFIC ACTUATOR MODEL



ISOMETRIC VIEW

DETAIL A  
ALL SLOTS

NOTE:

1. MATERIAL: NICKEL PLATED COPPER

ASME Y14.5M 2018 APPLIES 	MATERIAL:	NA	DRAWN:	SVS	DATE DRAWN:	2017-11-08	<b>DAIRYLAND ELECTRICAL INDUSTRIES, INC.</b> P.O. BOX 187 STOUGHTON, WI 53589 608-877-9900 DAIRYLAND.COM									
	UNLESS OTHERWISE SPECIFIED DIMENSIONS ARE IN INCHES. COMPUTER-GENERATED DRAWING DO NOT EDIT MANUALLY.	FINISH:	NA	DWG APPROVAL:	RJH	DATE APPROVAL:		03/02/2022								
.XXX = ±.005" .XX = ±.01" .X = ±.03" ANGLES = ±1°	THE INFORMATION CONTAINED IN THIS DRAWING IS THE SOLE PROPERTY OF DAIRYLAND ELECTRICAL INDUSTRIES, INC. ANY REPRODUCTION IN PART OR WHOLE, WITHOUT THE WRITTEN PERMISSION OF DAIRYLAND ELECTRICAL INDUSTRIES, INC. IS PROHIBITED.		TITLE: <b>SSD INSTALLATION ON ACTUATORS</b>		SHEET:	2	OF	2	DWG SIZE:	B	SCALE:	1:2	REV:	B	PART #:	100109