

#### WARNING

-Potential electrostatic charging hazard-  
Plastic enclosures are to be cleaned  
or wiped only with a damp cloth.

#### AVERTISSEMENT

-Risque de décharge électrostatique-  
Les boîtiers en plastique doivent être  
nettoyés ou essuyés uniquement avec  
un chiffon humide



#### WARNING

-Potential electrostatic charging hazard-  
Plastic enclosures are to be cleaned  
or wiped only with a damp cloth

#### AVERTISSEMENT

-Risque de décharge électrostatique-  
Les boîtiers en plastique doivent être  
nettoyés ou essuyés uniquement avec  
un chiffon humide



**DAIRYLAND**  
ELECTRICAL INDUSTRIES

**COMPANY CATALOG**

Since 1983, our goal at Dairyland has been to make a safer world. From our beginnings, solving stray voltage issues on dairy farms, to our global impact in the pipeline and high-power industries, we have decades of experience building rugged, reliable products that last.



DAIRYLAND.COM // 608.877.9900





# BUILT TO LAST

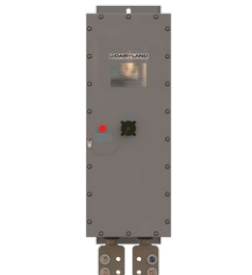
Dairyland Electrical Industries is the world's leading manufacturer of solid-state decoupling products. We've been making rugged and reliable products since 1983. After forty years, nearly every one of them is still in service.



**GCM**  
GRADIENT CONTROL MAT  
PAGE 36



**GI**  
GALVANIC ISOLATORS  
PAGE 33



**ISP**  
SOLID-STATE DECOUPLER  
PAGE 28



**OVERWATCH**  
HEFPD  
PAGE 32



**OVP**  
OVER-VOLTAGE PROTECTOR  
PAGE 29



**OVP2**  
OVER-VOLTAGE PROTECTOR  
PAGE 29



**PCR**  
SOLID-STATE DECOUPLER  
PAGE 24



**PCRH**  
SOLID-STATE DECOUPLER  
PAGE 24



**PCRX**  
SOLID-STATE DECOUPLER  
PAGE 26



**SSD**  
SOLID-STATE DECOUPLER  
PAGE 25



**ULTRABOX**  
PREMIUM JUNCTION BOX  
PAGE 30



**VTNI**  
NEUTRAL ISOLATOR  
PAGE 30

# DAIRYLAND PRODUCT ACCESSORIES

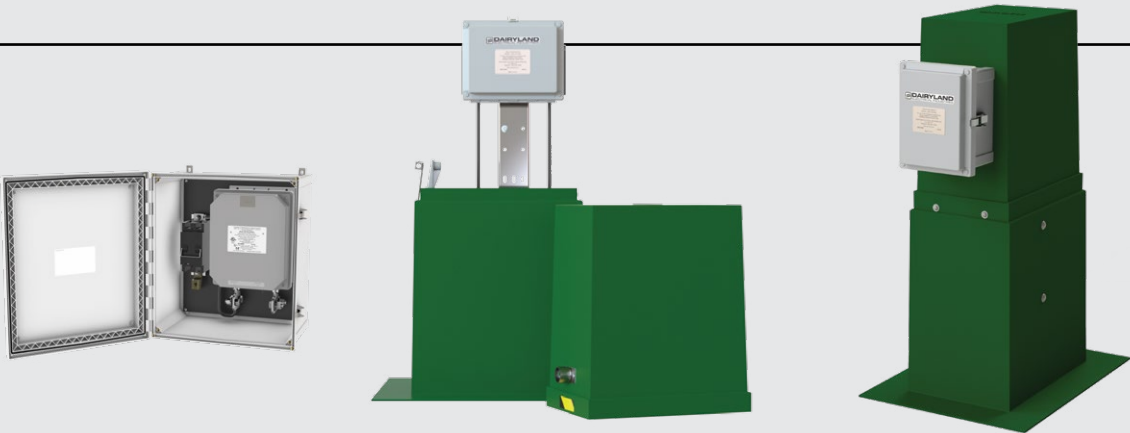
## FOR EVERY INSTALLATION CHALLENGE

Dairyland routinely assists customers with a wide variety of installation challenges. Through this experience, numerous optional accessories and mounting brackets have been made available to simplify the installation of Dairyland devices. Most accessories are custom or tailored for use with Dairyland devices to achieve optimum installation.

A complete listing of Dairyland product accessories can be found at [Dairyland.com/accessories](http://Dairyland.com/accessories)

### DECOUPLER ISOLATION SWITCH

One of Dairyland's most-requested accessories is our Decoupler Isolation Switch (SWX).



▲ SWX-100-ENCL

▲ SWX-100-INT

▲ SWX-100-PED

When decouplers are installed on a pipeline for AC voltage mitigation and over-voltage protection, there may be occasions where disconnection of the decoupler is required. Safe disconnection cannot always be easily accomplished by hand if notable AC induction is present, therefore Dairyland designed the Isolation Switch to serve this need. Where such isolation is necessary, the Isolation Switch allows safe disconnection without causing exposed arcs, in an AC fault-rated design.

- SWX addresses issues such as:
- Isolation of high-frequency signals from locators and coating defect instrumentation
  - Decoupler isolation from close interval survey (CIS) operations
  - Decoupler testing

Dairyland Switches can be internally or externally mounted on an MTP-36 pedestal or packaged with or without a Dairyland decoupler in a NEMA4X enclosure.





## HOW HENRY TACHICK BET THE FARM

Many iconic brands got their start in surprisingly modest settings: Harley-Davidson built its first motorized bicycles at the turn of the 20<sup>th</sup> century in a small shed in Milwaukee. In the early 1980s, Apple and Hewlett-Packard built their first computer hardware in residential garages in the Bay Area of northern California.

Dairyland Electrical Industries has an equally down-to-earth origin story. The company began when Henry Tachick was in the right place at the right time with an inventor's mindset. As demand for his clever products grew, the family farm played a starring role as Dairyland's first manufacturing facility. To get the fledgling company off the ground, he literally had to "bet the farm."



STARTING A BUSINESS USING  
INVENTIVE PROBLEM SOLVING

In 1982, while working as a manufacturing sales representative, a utility customer asked Henry for help in proposing an isolation transformer that would electrically separate the utility's neutral line from the neutral line of a farm. They wanted to eliminate stray voltage that can sometimes exist on a power utility neutral, preventing it from entering a dairy farm and having adverse implications on the health and milk production of the cows.

In the process of considering this request, Henry believed there was a better and less costly way to accomplish this objective by using a voltage-triggered electronic isolation switch. The utility was receptive to his proposal and were willing to conduct tests of a prototype device on their system. Henry assembled a prototype which he called the Neutral Isolator, and set out to validate his invention through both field and lab testing.

Henry started selling the Neutral Isolator in early 1983. Initially it was built by a contract manufacturer, but Henry soon realized that the device's construction was so manageable that he and his family could assemble Neutral Isolators themselves. So he set up a small shop in the milk house of the family farm he grew up on, and put his two teenage children to work assembling Neutral Isolators. "They worked their way through high school and paid their own way through college doing this," he recalls.

BETTING THE FARM

Inventing a product is only the first step to developing a successful business. While Henry had a marketable product that would meet the needs of potential customers, the success of the business was still in question. Each year, Henry would have to bet big on the future success of the Neutral Isolator.

To finance the young company's operations, Henry borrowed money from the bank, using the family farm as collateral. While this represented a confident move, it soon became apparent that Dairyland's future was more expansive than he could have ever imagined.

As customers began installing Neutral Isolators, they soon found new uses for a variation that Henry had not envisioned. A case in point: A utility in northern Indiana discovered the Neutral Isolator could be used for DC isolation, addressing several issues associated with the required corrosion protection of underground gas pipelines. In this application, the customer was using Neutral Isolators to replace polarization cells that were being used for this purpose.



INNOVATION FOR THE  
CORROSION INDUSTRY

This new application, combined with another groundbreaking leap in product development, would change Dairyland's future forever. Investigating the corrosion industry's use of polarization cells, Henry found another opportunity for innovative product design. Polarization cells were used to block DC current and operate as a low impedance to ground AC current. But these devices needed routine maintenance and required workers to wear protective clothing due to the caustic bath of potassium hydroxide they contained.

Henry discovered that the ideal device for corrosion industry applications was a solid-state and maintenance-free device that blocked DC current and grounded AC current. As a result, this new product was easily adapted to the corrosion industry, where it is referred to as a "decoupler." It has since become the major part of Dairyland's business.

Much to Henry's surprise, his solid-state decoupler design took the power utility corrosion industry by storm, replacing most existing polarization cells with a significantly more reliable, maintenance-free solution. Soon after, the other segments of the corrosion industry, such as underground pipeline



companies, expressed interest in lower-rated decouplers that would meet the needs in their segments of the corrosion market.

Dairyland soon joined the National Association of Corrosion Engineers (NACE), which helped give the company and its cutting-edge products much needed visibility. "It opened up a lot of doors for us, and was key to how we sold the product to the corrosion market. For years, my son Mike and I crisscrossed the country, presenting technical papers about pipeline corrosion problems at NACE regional and national events," Henry recalls. "It wasn't a hard sell. We just talked about the problems we knew they had on corrosion systems, and how to solve them."

It quickly became apparent that there was a real need for products to assist in the corrosion protection of gas and liquid pipelines. The requirement for these devices was demanding. They needed to electrically isolate sections of pipelines to improve corrosion protection schemes while also safely grounding AC faults and lightning. In addition, most of these pipelines were being forced into corridors with electric power transmission lines, so induced AC was a growing concern that Dairyland's decouplers had to address.

Dairyland's solid state decouplers have been, and continue to be, a rugged solution for a variety of



electrical applications worldwide with an outstanding reliability record. Their applications have expanded to include storage tank decoupling, gradient control mat isolation, and galvanic isolation of boats when plugged into shore power in a marina.

GROWING INTO A COMPANY  
THAT CARES

Dairyland has grown significantly from its start in a milk house on the family farm. Dairyland's product lines have increased and Dairyland products have been installed for a variety of applications all over the world. "I never dreamed that the company would grow to its current size," Henry recalls. "I just enjoyed experimenting and helping people solve electrical problems." Despite Dairyland's growing size, that focus on solving problems and helping others continues to influence the company. Dairyland's focus on great products, and reliable service to others is a core part of every facet of the business. President Mike Tachick says, "We believe that our words and actions matter and others will be able to tell if we truly care or not. Our goal is to deliver exceptional value and outstanding service to our customers, prospects, and employees. The better we operate, the better we can serve others."





## DAIRYLAND GUARANTEE: ALWAYS RUGGED



Since our start in 1983, Dairyland has grown to be an industry leader, with products sold into more than eighty countries, solving a wide variety of application challenges. Customers around the globe trust us to provide them with safe, reliable products that work in the harshest technical and environmental challenges that they face. What makes our products so dependable? It starts with our design motto: ALWAYS RUGGED.

### BUILDING PRODUCTS THAT LAST

At Dairyland, our goal is to make a safer world. We work tirelessly to deliver to our customers the safest, most reliable products on the market.

Our product design philosophy is quite simple: we strive to build decouplers that don't fail, are easy to use, and need no regular maintenance.

Building products that deliver on the Always Rugged promise requires extensive effort across many departments. Product development begins in our engineering department where our teams use a detailed research and development process to conservatively design products that exceed all reasonable field conditions. Once initial designs are completed, products go through extensive testing in numerous real-world conditions and we gather feedback directly from prospective



customers for a refinement phase, ensuring that the final product brought to market is impeccably designed and easy to use.

Robust designs are just the first step. Next, our supply chain department sources quality parts to meet tight specifications. We look closely for partners that have robust quality systems, treat their employees well, and maintain professional, well-kept manufacturing spaces. This won't always mean selecting the cheapest materials, but it leads to well-built, quality components that we can rely on – part of our Always Rugged philosophy.

Finally, our manufacturing team uses detailed quality assurance programs to guarantee that all products are built to the highest quality. From refined processes to inspection and product testing, our teams are dedicated to efficiently and consistently building high-quality products. Dairyland is also certified to ISO 9001:2015 quality requirements, ensuring that all processes are regularly evaluated, audited, and improved upon, resulting in premium manufacturing capabilities.

### ALWAYS RUGGED VERIFICATION

Decouplers are critical for protecting expensive assets and keeping personnel and the public safe, and we hold ourselves to a very high, Always Rugged



standard. With this much on the line, you need to be certain that your decouplers will perform as specified.

Confirming that Dairyland products do what we say they do is our top priority. We maintain an extensive list of internationally recognized third-party product certifications, which verify that our products conform to the recommended electrical and safety codes, and confirm their performance against harsh conditions. Despite the cost and time commitment associated with maintaining these certifications, we insist upon it because it's important. Our customers can rest assured that their Dairyland products meet all critical performance requirements, fail-safe operation, and address hazardous location needs to ensure product performance, longevity, and safety.

### PERFORMANCE YOU CAN TRUST

We are working hard to make a safer world, but we're not finished yet. Dairyland products are used across the globe to address complex application challenges and maintain a failure rate of less than 0.01%. When you invest in Dairyland products you'll receive premium products that are suited for extreme conditions, resulting in protection for your equipment and safety for your personnel. We're excited to support you along the way.



**DAIRYLAND GUARANTEE:**

**ALWAYS  
RELIABLE**

For forty years, Dairyland has sought to be an innovative leader for the corrosion prevention industry – not only by providing rugged products, but also reliable support. Our team has a genuine passion for the work they do, and they strive to make your experience as simple and straightforward as possible. Whether you are still researching your application challenges or you are deep into an installation in the field and need some troubleshooting backup, we’re here to support you.

A portfolio of rugged and fail-safe products, and our commitment to reliable tech and customer support are what sets Dairyland apart, making us a trusted partner to our customers around the world. Here’s how we aim to deliver on our Always Reliable commitment.

**LISTENING TO OUR CUSTOMERS**

Whether you are brand new to Dairyland or an experienced user of our products, we want to develop a strong connection with you. This starts by listening to your questions, suggestions, and concerns to truly understand your unique situation. In fact, our active listening has led to many of our innovations over the past three decades – through conversations with industry professionals just like you. By listening to customer concerns and needs, Dairyland has pioneered new technologies and set new standards in the market in order to solve problems – everything from isolation issues in CP systems to over-voltage protection from lightning and AC fault current. In the end, it all comes down to listening and understanding your needs. So whether you have product questions, application challenges, or even have a new product idea, we’ll be ready to listen carefully and assist in any way we can.

**BUILDING SAFE, RELIABLE PRODUCTS**

Listening is only part of the story. When you choose a solution, you want to know that it will reliably perform. When you buy a product from Dairyland, you can expect unmatched safety features and a virtually

unlimited lifespan. Through refined engineering methods, quality supply chain practices, and robust manufacturing processes, Dairyland products have been proven in a wide variety of applications around the world. Our product failure rate across product lines is less than 0.01%. It all adds up to reliable product solutions that you can trust to perform.

**STRONG TECHNICAL RESOURCES**

A commitment to great products requires more than quality engineering and design. Part of our Always Reliable guarantee is to provide excellent technical training and support to our customers. In fact, we travel around the world to present extensive technical training at industry conferences and to individual companies. Through our expertise in isolation and grounding, we are a strong resource within the corrosion prevention industry.

We want you to be able to use and understand your product with ease, so you can have full confidence in its reliability. Our self-service knowledge base is an online resource full of white papers, application guides, videos, and interactive tools. In addition, our technical support team is always ready to assist by providing clear, thoroughly researched answers to your inquiries.

**COMMITMENT TO YOU**

At the end of the day, our commitment to reliability is about you. Our teams are passionate and dedicated to understanding your needs and providing reliable products and service in all situations. We aim to be generous with our time and experience and are willing to assist you, even if you don’t end up needing a Dairyland product. We look forward to hearing from you soon!







# WE'RE HERE TO HELP

DELIVERING OUTSTANDING SERVICE TO EVERY CUSTOMER

Whether you're new to Dairyland or a long-time customer, our customer service team will help you get answers – fast! Our emphasis on service has been an integral part of Dairyland's culture since Henry Tachick founded the company, and continues to be a part of our company's culture today.

While our emphasis on reliable service permeates throughout the company, no team is a better reflection of our pursuit than our customer service team. The team works regularly with our customers, each of whom has unique backgrounds and needs. All of our daily interactions are important, whether they are with industry colleagues, long-time customers, industry partners, or individuals looking to purchase Dairyland products for the first time. Regardless of your request or need, our team works quickly to respond to emails and phone calls, provide quotations, and process orders. If they're unable to answer your questions on

the spot, they'll even track down answers from our engineering and technical support teams.

To deliver on our commitment of being "Always Reliable", we set high standards for our customer service team and measure it continually. Our customers love our turn-around times for quotes, orders, and general inquiries, and report a nearly perfect favorability rating of their customer experience. Performance on these processes are monitored and reviewed regularly, as a part of Dairyland's ISO 9001:2015 certification, allowing us to emphasize continuous improvement.

This all adds up to a core value that is extremely important to us: people have inherent value. That means we truly value you and that your story matters to us. Regardless of your need, the Dairyland team is here to serve you as quickly and expertly as possible.

## CUSTOMER TESTIMONIALS

In my experience working with Dairyland, their Customer Service and Technical Support teams are very easy to work with. They ask the right questions and have the product knowledge to help get you the right product needed for your application.

— Josh Schmeisser  
MESA

ARK Engineering has been recommending, designing with, and installing Dairyland products for almost 30 years! Their products operate effectively and stand up to all field conditions. Their technical support team is excellent and provides top-notch service to our engineering design team and our installation staff. We have nothing but praise for their products and service.

— Bob Allen, Founder  
ARK Engineering & Technical Services, Inc.



# SUPPORT YOU CAN TRUST

SOLVING YOUR TOUGHEST  
APPLICATION CHALLENGES

Dairyland's company vision can be summarized simply as, "to make a safer world". This objective is carried out in a variety of ways across the company, but one team in particular works on the front lines. Our business development team interfaces directly with distributors, corrosion specialists, technicians, and engineers to help solve complex performance and safety challenges in the energy industry.

At Dairyland, business development isn't just about selling great products. More importantly, we pride ourselves on being a reliable resource for complete technical guidance on applications and products associated with isolation, grounding, over-voltage protection, and related issues. Our team has decades of technical experience, and an in-depth knowledge of Dairyland product offerings and industry solutions. We make sure your technical questions, application challenges, or product

inquiries are thoroughly researched, and that you know how to proceed – even if you don't end up needing our products.

Education and sharing of our technical expertise shapes our business development team significantly. We are frequent presenters at tradeshow and seminars—both domestically and internationally—attending or speaking at over 30 events annually. If you can't meet us at an industry event, you can join our team online for one of our regular webinars.

Often, you may need to contact our team directly for questions unique to your application. Our business development team's response time is typically less than an hour and often times you'll find yourself speaking to an expert within minutes.

Farwest Corrosion has had the privilege of working with Dairyland for over 20 years. Their products, solutions, and technical support are superior in every way. The entire Dairyland team is a pleasure to work with and their service exceeds expectations. Dairyland has been a wonderful partner.

— Troy Rankin, President  
Farwest Corrosion Control Company

We specify Dairyland equipment in all our AC mitigation designs. The products and tech support are first rate!

— Bill Snyder  
RK&K





# HOW YOU MAKE IT MATTERS

## A TEAM APPROACH TO MANUFACTURING

**D**airyland customers enjoy quality products that are rugged, reliable, and boast an impeccable performance rating across our numerous product lines. No department at Dairyland impacts the final product that is put in our customer's hands more than our manufacturing team. Together, through a team approach, they drive the quality and performance that our customers have come to expect from Dairyland products.

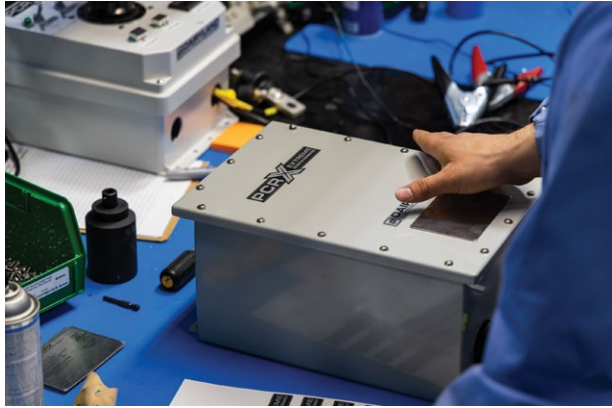
Our manufacturing philosophy really starts with our people. Located in the small rural town of Pound, Wisconsin, our talented manufacturing team is comprised of experienced, hard-working individuals who each bring new ideas and perspectives to the company. Though their backgrounds and experiences may differ, the team stands unified through common core values and one specific goal: to serve the industry world-wide by building rugged and reliable products people can trust.

Our hands-on approach and thorough cross-training play a huge role in delivering the high-quality products customers expect. Every product that goes out the door at Dairyland is made by an extensively trained and experienced production assembler. We

manually build and inspect every product without the use of robots or other automated processes, ensuring a hands-on quality build. Our team also emphasizes complete cross-training throughout the manufacturing process. Not only does this give our team great flexibility and efficiency, it also ensures that processes are clearly defined and well adopted across the board, resulting in consistent product quality. Our team members can go to any station throughout the day and work efficiently, delivering quality results to consistent standards.

Furthering our commitment to product quality, our manufacturing team also operates under UL, ATEX, IECEx, EAC, and ISO 9001 standards. We've diligently developed procedures that meet or exceed these standards and regularly audit them so that we know we are operating efficiently and are producing great quality products.

The end result is clear to our customers around the world: we build rugged, reliable products that you can trust to perform.



The Supply Chain and Manufacturing Team take great pride in their work, working together to supply Dairyland products throughout the world. We aim to provide our customers with superior service and quality each and every day.

— Robert Whitehouse  
Manufacturing & Supply Chain Manager



# BRANDING THE HERD

## THE HISTORY OF THE DAIRYLAND COWS

In 2013, Dairyland Electrical Industries was rebranding itself. While doing market research and evaluating our place in the industry, we learned that we were simply known within the industry as “Dairyland” and our varying decouplers were not necessarily called by their names but bore the Dairyland moniker too (like how all lip balm products are referred to as Chapstick, regardless of which company made it).

With this knowledge in mind, Dairyland’s marketing team updated their visual identity, replacing the “DEI” mark with the “D” logo and Dairyland design that

we still use to this day. We wanted to communicate our new identity and emphasize our company’s beginnings, where we started by solving stray voltage on dairy farms.

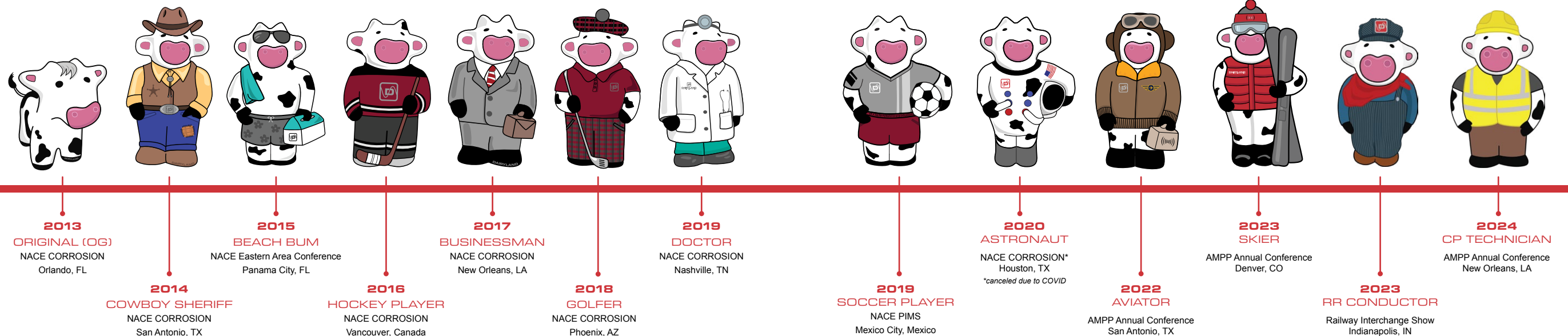
While looking around for promotional items to hand out at industry events and conferences, Dairyland’s marketing manager happened to come across a four-legged squishy cow (OG Cow) and decided it would be a great piece of swag to bear the new Dairyland logo. The team figured it would be something the company would do for six months at most, and then they would move on to the next thing. The industry, however, had different plans.

We took the newly minted OG Cow to a regional tradeshow where the inventory was very quickly depleted. We were udderly astounded. Those in the industry could not get enough of our four-legged friend, and we quickly decided that more cows would be needed.

Fast-forward to 2014. The original cows had been such a hit throughout their debut year and the Dairyland team knew they wanted to keep things moo-ing. They then had an idea: give the cows a theme that correlates to where they’ll be given

away. The San Antonio NACE conference was quickly approaching that year, and Dairyland had plans to host 100+ friends and colleagues at a Texas rodeo. At the event, those guests were officially introduced to Cowboy Cow. The continued popularity gave rise to other themed cows over the years, such as Hockey, Business, Beach, Golf, Doctor, Soccer, Astronaut, and Aviator Cow.

What will we come up with next?



Learn more about the Dairyland herd on the next page. ►



# GET TO KNOW THE COWS

## DAIRYLAND'S UNOFFICIAL MASCOTS



**MOORICE**  
Director of the Herd

**Favorite Part of Your Job:**  
Standing on four legs instead of two.

**Life Motto:**  
"At Dairyland, we will never *steer* you wrong."



**CLINT MILKWOOD**  
Chief Safety Patrol Officer

**Favorite Part of Your Job:**  
I enjoy the fact that no one knows if I am a cowboy or a sheriff, or both...

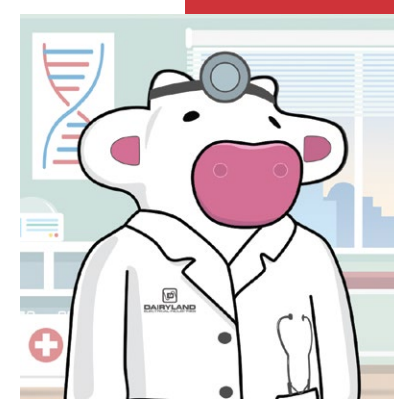
**Favorite Movie:**  
The Good, The Bad, and The Ugly



**PATTY PLAYA**  
Chief Sunscreen Distributor

**Favorite Part of Your Job:**  
Doing absolutely nothing all day long — life's a beach after all!

**Favorite TV Show:**  
Baywatch



**DR. MOOLITTLE**  
Health & Wellness Liaison

**Favorite Part of Your Job:**  
Ordering CAT Scans and COW Scans.

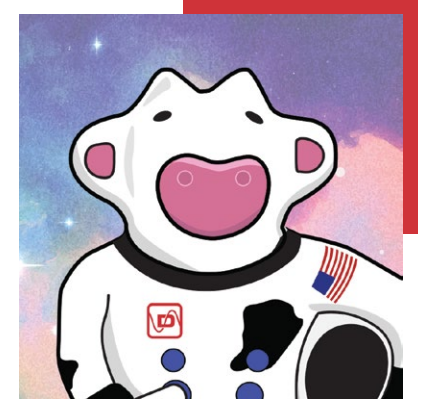
**Favorite Comedian:**  
Eddie Murphy



**LIONEL MOOSSI**  
Shorthorn Forward

**Favorite Part of Your Job:**  
Grazing on the football pitch.

**Hobbies:**  
Kicking and mooing.



**MILK E. WHEY**  
Moo-n Inspector

**Favorite Part of Your Job:**  
Jumping over the moon.

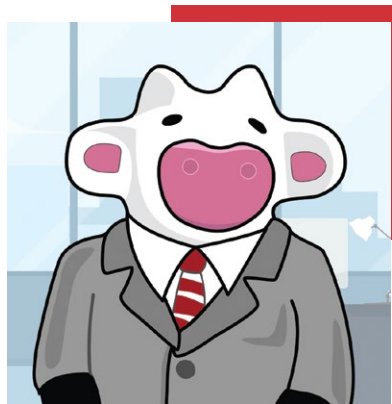
**Hobbies:**  
Eating blue moon ice cream & mastering my moooves in zero gravity.



**SVEN HOLSTEIN**  
Stray Puck Mitigator

**Favorite Part of Your Job:**  
Driving the Zamboni & getting my tongue stuck to the ice.

**Hobbies:**  
Icing cakes and collecting the jerseys of my fellow *cattle*.



**DWIGHT K. MOO'T**  
Assistant to the Regional Manager

**Favorite Part of Your Job:**  
Pranking my coworkers.

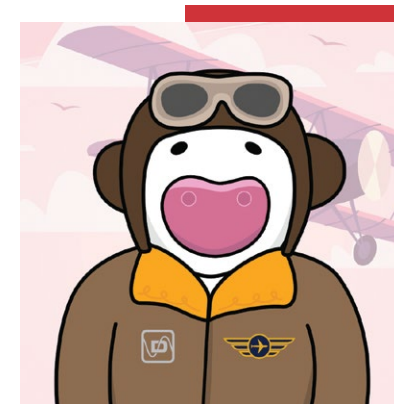
**Hobbies:**  
Bears, Beets, Battlestar Galactica.



**OLD TOM MOORIS**  
King Putt

**Favorite Part of Your Job:**  
Swimming with the alligators.

**Superstition:**  
I like to wear two pairs of pants, in case I get a hole in one.



**CAPTAIN MITT AGATION**  
Internal Altitude Adjuster

**Favorite Part of Your Job:**  
I'm not sure. I tend to wing it most days.

**Favorite Movie:**  
Planes, Trains, and Automobiles



**LINDSEY VONN-MOO**  
Motivational Skier

**Favorite Part of Your Job:**  
I mean, as a cow, it is pretty incredible that I am even able to ski.

**Favorite Quote:**  
"It is all downhill from here."



**SIR CHUGGINGTON CHEDDAR**  
Locomotive Lieutenant

**Favorite Part of Your Job:**  
Conducting a moo-ing train

**Hobby:**  
Blowing off steam in the bar car



# THE PRODUCT THAT STARTED IT ALL

Dairyland customers around the world trust our innovative, high-quality products to address a wide variety of application challenges. Our rugged, reliable product designs were shaped by our company's first product: the Neutral Isolator. Armed with a problem-solving mindset and a desire to serve the industry with quality solutions, Henry Tachick invented the Neutral Isolator to address stray voltage on dairy farms.

In a farm setting, the power utility may want to bond their grounded primary neutral to your secondary neutral for safety. However, stray voltage from this bonding can affect dairy cattle and other livestock and is generally seen as a nuisance that should be prevented.

The Dairyland Variable Threshold Neutral Isolator (VTNI) isolates these two neutrals and effectively prevents stray voltage from affecting livestock. If the voltage rises on either system due to lightning or an AC fault, the device instantly connects to allow safety grounding, before reverting to its standard operating mode. Dairyland's VTNI meets requirements for an isolation product (NESC 97D2).

Now, forty years later, Henry Tachick's innovative approach to solving application challenges with the VTNI continues to shape Dairyland's future. With a solution-oriented mindset, Dairyland builds products to address challenging isolation, grounding and filtering applications in a variety of industries around the world.





DAIRYLAND

# SOLID-STATE DECOUPLERS

PRODUCTS FOR EVERY APPLICATION



**PCR**  
THE ORIGINAL SOLID-STATE  
DECOUPLER

Our original solid-state decoupler design, the PCR, replaced original polarization cell technology and established the use of solid-state decouplers around the world. The PCR features rugged, reliable performance, a wide range of fault current ratings, and additional configuration options, making it extremely versatile.



**PCRH**  
THE ONLY DECOUPLER SUITABLE  
FOR DIV1/ZONE 1 ENVIRONMENTS

The PCRH adds to the technology offering found in our PCR by featuring an explosion-proof package, making it suitable for use in Class 1, Division 1 and Zone 1 areas. The PCRH's extensive third-party certifications make it the first and only decoupler in the world suitable for these harsh environments.



**SSD**  
THE MOST COMMONLY USED  
DECOUPLER IN THE WORLD

The SSD uses proven, solid-state construction combined with innovative production and packaging techniques, to offer exceptional performance in a low-cost package. Conservative product ratings and versatile mounting accessories make it suitable for common applications including AC mitigation and insulated joint protection.

**OVERVIEW:** DC ISOLATION + AC GROUNDING  
IN A SEALED, MAINTENANCE-FREE PACKAGE

**KNOWN FOR:** MOST RELIABLE DECOUPLER  
PERFORMANCE IN THE WORLD

**IMPROVE YOUR CP SYSTEM**  
Dairyland solid-state decouplers will isolate cathodically protected structures to improve system performance, ground hazardous events like AC faults and over-voltages, and protect against lightning.

**DESIGN:**

- SELECTABLE  
PRODUCT RATINGS
- FAIL-SAFE +  
MAINTENANCE-  
FREE
- SOLID-STATE  
CONSTRUCTION
- STANDARDIZED  
MOUNTING  
OPTIONS

**FEATURES:**

- IMPECCABLE  
PERFORMANCE  
RECORD
- CONSERVATIVE  
PRODUCT RATINGS
- RATED TO  
WITHSTAND  
LIGHTNING
- THIRD-PARTY  
CERTIFIED

**CLIENT TESTIMONIAL**

"We've installed over 800 Dairyland devices on our system for AC mitigation and have not had one fail due to normal use. We are impressed with Dairyland products, and their support staff."





DAIRYLAND'S  
MOST  
SOPHISTICATED  
DECOUPLER  
FEATURING CAMOUFLAGE TECHNOLOGY

**OVERVIEW:** DC ISOLATION + AC GROUNDING  
FEATURING CAMOUFLAGE TECHNOLOGY

**KNOWN FOR:** INVISIBILITY DURING  
INTERRUPTED SURVEY TESTING

**IMPROVE YOUR CP SYSTEM**


The PCRX will isolate cathodically protected structures to improve system performance, ground hazardous events like AC fault and over-voltages, and protect against lightning. Unlike other decouplers, the PCRX's camouflage technology renders it virtually invisible to interrupted survey testing, making it the most sophisticated decoupler in the world.

**DESIGN:**

STURDY STAINLESS-STEEL ENCLOSURE	FAIL-SAFE + MAINTENANCE-FREE	PROVEN SOLID-STATE CONSTRUCTION	RATED TO WITHSTAND LIGHTNING
--	---------------------------------	------------------------------------	------------------------------------

**FEATURES:**

SOPHISTICATED CAMOUFLAGE TECHNOLOGY	SELECTABLE PRODUCT RATINGS	SOLUTION TO INTERRUPTED SURVEY RESPONSE ISSUES	NUMEROUS THIRD-PARTY CERTIFICATIONS
---	-------------------------------	--	---

<b>CLIENT TESTIMONIAL</b> "Dairyland extensively tested various conditions on pipeline systems. The PCRX eliminated our CIS issue."	
--	--



The PCRX is a solid-state decoupling device commonly used in conjunction with cathodically protected structures. It prevents the flow of direct current while simultaneously providing a ground path for steady-state induced AC, if present. The PCRX also offers over-voltage protection for both lightning and AC fault current conditions.

The PCRX provides the additional benefit of electronically camouflaging itself from interrupted surveys, including close interval surveys (CIS), preventing the device from contributing to errors in pipe-to-soil potential readings. Field testing has shown that interrupted surveys can sometimes be impacted by combinations of factors such as pipeline coatings, soil resistivity, and the capacitance of decouplers resulting in excessively electro-negative instant-off values. In most cases the PCRX completely solves this problem. The PCRX uses an active closed loop control circuit to mask the capacitive effects, ensuring accurate and timely pipe-to-soil potential measurements. It does this without sacrificing the rugged over-voltage, AC mitigation, CP isolation, and safety grounding of Dairyland's standard decoupling products.





DAIRYLAND'S

# HIGH-POWER DECOUPLER

PREFERRED DEVICE OF POWER UTILITY COMPANIES

ISP  
ISOLATOR/SURGE PROTECTOR

The ISP is the original solid-state AC conducting and DC blocking device designed for the corrosion prevention industry and features the most flexible and wide range of product ratings and applications available to the market.



**CLASSIFICATION:** SOLID-STATE DECOUPLER      **KNOWN FOR:** HIGH POWER DECOUPLING

**OVERVIEW:** DC DECOUPLING WITH WIDE RANGE OF RATINGS MAKING IT APPROPRIATE FOR POWER TRANSMISSION SYSTEMS

IMPROVE YOUR CP SYSTEM

The ISP will isolate cathodically protected structures to improve system performance, providing the widest range of features and ratings of Dairyland’s decouplers, including the highest levels of AC fault-handling capability – up to the highest typical transmission system faults.

DESIGN:			
FAIL-SAFE + MAINTENANCE-FREE	COMPATIBLE WITH IN-SITU TESTER FOR COMPREHENSIVE TESTING	OPTIONAL SUBMERSIBLE ENCLOSURE	RATED TO WITHSTAND LIGHTNING
FEATURES:			
IMPECCABLE PERFORMANCE RECORD	FAIL-SAFE CONSTRUCTION WITH BUILT IN SELF-PROTECTION FEATURES	HIGHEST FAULT CURRENT RATINGS AVAILABLE	CONSERVATIVE PRODUCT RATINGS

**CLIENT TESTIMONIAL:**  
“In terms of product reliability and reputation, no other product line exceeds Dairyland.”

DAIRYLAND

# OVER-VOLTAGE PROTECTORS

RUGGED PRODUCTS BUILT TO LAST

Dairyland’s OVP product line specializes in over-voltage protection of insulated joints. It is the premier option when lightning or AC fault current is a concern, but no induced AC voltage is present. Both devices feature solid-state, fail-safe designs, with substantial ratings for fault current and lightning surge current.

The OVP model is certified for use in Class 1, Division 1 and Zone 1 hazardous locations, with explosion-proof construction.

The OVP2 model is classified for use in Class 1, Division 2 and Zone 2 environments, in a lighter-weight, lower cost package.



OVP  
DIV 1 | ZONE 1



OVP2  
DIV 2 | ZONE 2

**OVERVIEW:** MOST RELIABLE OVER-VOLTAGE PROTECTION IN THE INDUSTRY      **KNOWN FOR:** PROTECTING INSULATED JOINTS FROM LIGHTNING AND AC FAULT CURRENT

PROTECT YOUR INSULATED JOINTS

Dairyland over-voltage protectors safeguard against lightning strikes and AC faults, extending the life of insulated joints with their maintenance-free operation and an essentially limitless lifespan.

DESIGN:			
SELECTABLE PRODUCT RATINGS	FAIL-SAFE + MAINTENANCE-FREE	SOLID-STATE CONSTRUCTION ELIMINATES ARCING	STANDARDIZED MOUNTING OPTIONS
FEATURES:			
IMPECCABLE PERFORMANCE RECORD	CONSERVATIVE PRODUCT RATINGS	AC FAULT CURRENT AND LIGHTNING PROTECTION	NUMEROUS THIRD-PARTY CERTIFICATIONS





# UltraBox®

**OVERVIEW:** PREMIUM MODULAR JUNCTION BOXES BUILT TO YOUR SPECIFICATIONS OR SHIPPED AS COMPONENTS

**KNOWN FOR:** FULLY CUSTOMIZED JUNCTION BOXES DELIVERED ULTRA QUICKLY — IN DAYS INSTEAD OF WEEKS

## DESIGNED WITH YOU IN MIND

Dairyland's UltraBox features easy access and the ability to add, remove, or reposition components at any time – unlike existing designs using shunts or resistors fixed to a backplane. Featuring movable DIN rail mounting systems and snap-in modules with industry standard shunts and resistors, users have complete control over the present configuration and future expansion of their product.

Whether configuring an anode junction box, interference bond, rectifier output box, positive/negative splitter, or an enhanced test station box, Dairyland can quickly package and ship the optimum configuration, using standard enclosures and stocked modules containing the most common shunts, resistors, and terminals.

### DESIGN:

POLYCARBONATE OR STAINLESS STEEL ENCLOSURES

ADJUSTABLE DIN RAIL MOUNTING SYSTEM

UNIQUE LINKING HEADER SYSTEM FOR SHUNT CONNECTIONS

ENHANCED RESISTOR DESIGN

### FEATURES:

SECURE SNAP-IN MODULES ALLOW QUICK ADJUSTMENTS

RAPID DELIVERY OF CUSTOM CONFIGURATIONS

INDUSTRY STANDARD, CORROSION-RESISTANT COMPONENTS

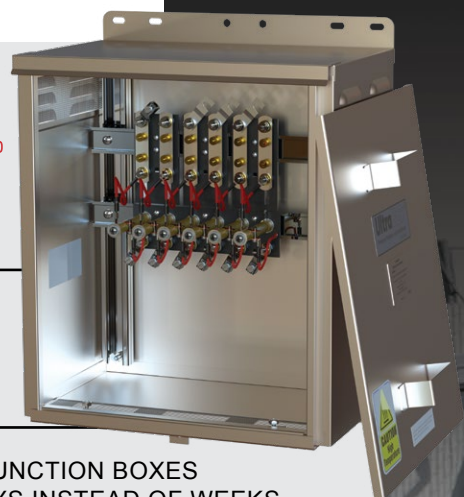
DIRECTLY ACCESSIBLE CONNECTIONS

### CLIENT TESTIMONIAL:

"The UltraBox is a huge improvement over the traditional J-box. I really like that we can have all the parts in stock to build whatever we need — on the tailgate and at a moment's notice. It's a better product and a real time and money saver!"

— Paul Sedlet, President, Accurate Corrosion Control, Inc.

# BUILDING A BETTER JUNCTION BOX





DAIRYLAND'S LATEST INNOVATION FEATURES

# HIGH-ENERGY FAULT PROTECTION

FOR THE RAILROAD INDUSTRY

OVERWATCH

HIGH-ENERGY FAULT PROTECTION DEVICE

Dairyland's Overwatch HEFPD is a new class of device, designed using our proven solid-state technology. Overwatch is rated up to 4000 amps for a 12 cycle (0.2 second) duration AC fault event as defined in AREMA Manual Part 11.3.7, while also meeting the applicable requirements of primary surge protection as defined in 11.3.1.

Overwatch builds on 40 years of Dairyland experience in AC fault and over-voltage protection. It was designed using many of the same tried and true components and technologies used by Dairyland world-wide for handling high-energy faults.



**CLASSIFICATION:** HIGH-ENERGY FAULT PROTECTION DEVICE (HEFPD)

**AREMA STANDARDS:** MEETS 11.3.7 AND APPLICABLE REQUIREMENTS OF 11.3.1

**OVERVIEW:** PROTECTS YOUR TRACK-CONNECTED SIGNAL AND CROSSING WARNING SYSTEMS AND PREVENTS COSTLY INTERRUPTIONS CAUSED BY AC FAULT EVENTS AND LIGHTNING

PROTECT YOUR SIGNALING EQUIPMENT

Overwatch HEFPD by Dairyland Electrical Industries is a first-of-its-kind device specifically designed to divert high-energy AC faults from railroad signaling circuits to ground. It operates as a normally open voltage-triggered solid-state switch, closing immediately upon sensing voltage above a predetermined threshold, and reopening once the over-voltage event has cleared.

DESIGN:			
NEMA 4X STAINLESS STEEL, POWDER COATED, AND LOCKABLE ENCLOSURE	CONFIGURABLE CONNECTIONS OPTIMIZE RATINGS + PERFORMANCE	SOLID-STATE COMPONENTS PREVENT SPARKS AND ARCING	REPLACEABLE FUSE MODULES
FEATURES:			
WITHSTANDS MULTIPLE AC FAULT OR LIGHTNING SURGE EVENTS WITHOUT FAILURE	PROTECTION FROM HIGH-ENERGY AC FAULTS AND LIGHTNING SURGES	AUTOMATIC RESET AFTER OVER-VOLTAGE EVENTS	SINGLE AND DUAL CHANNEL MODELS

PROTECT YOUR SHIP WITH PREMIUM

# GALVANIC ISOLATORS

DESIGNED FOR MARINE ENVIRONMENTS



**CLASSIFICATION:** MARINE GALVANIC ISOLATORS

**CERTIFICATIONS:** MEETS FAIL-SAFE CRITERIA OF ABYC A-28 AND CE MARINE – ISO 8846

**OVERVIEW:** PREVENT GALVANIC CORROSION ON SHIPS WITH SHORE-BASED ISOLATION AT THE SHIP-TO-SHORE POWER CIRCUIT

PROTECT YOUR BOAT FROM GALVANIC CORROSION

Galvanic isolators are a desirable addition whenever a boat is connected to AC shore power, due to the galvanic circuit created by the grounding conductor, which can cause corrosion of the boat and its drive system components. Due to the difference in the potential of the hull and drive system metal compared with the shore grounding system or other boats, a galvanic current which causes corrosion can flow.

DESIGN:			
VERIFIED FAIL-SAFE CONSTRUCTION	COMPACT DESIGN WITH STANDARD MOUNTING OPTIONS	NO MONITORING SYSTEM REQUIRED	RATED FOR LIGHTNING CURRENT
FEATURES:			
IGNITION PROTECTION	LONGEST WARRANTIES AVAILABLE IN THE INDUSTRY	HIGHEST AC FAULT CURRENT RATINGS	MAINTENANCE-FREE OPERATION



# AC VOLTAGE MITIGATION

## APPLICATION OVERVIEW

When your pipeline shares a right of way with high-voltage power lines, the electromagnetic field on the power lines can induce unwanted voltage onto the pipeline. This steady-state AC voltage is a safety hazard for personnel and can contribute to corrosion problems. In order to mitigate this voltage, you require an effective grounding path that will continue to isolate DC voltage for cathodic protection.

Dairyland decouplers provide you with an effective grounding path that mitigates induced AC, while simultaneously maintaining DC isolation. This is possible due to the nature of a Dairyland decoupler which simultaneously provides a low resistance to AC and a high resistance to DC. As a result, your CP system will continue to work efficiently and personnel will be safe from unwanted AC interference.

## RECOMMENDED PRODUCTS



SSD



PCR



PCRX



PCRH





GRADIENT CONTROL MATS AND DECOUPLING

APPLICATION OVERVIEW

There are many sources of potentially dangerous voltage that can appear on your pipeline including voltage from induced AC, voltages from AC fault current, and lightning strikes. In order to provide protection for workers from dangerous step and touch potentials, you likely want to use a gradient control mat. Common industry mat designs have notable deficiencies in their designs, limiting their effectiveness. Additionally, gradient control mats can impact cathodic protection system levels, due to the need to connect them directly to your pipeline.

Dairyland’s Gradient Control Mat (GCM) is designed in a grid-type configuration, limiting step and touch potentials for a safer work environment around your pipeline. The 3” by 3” grid design has been thoroughly engineered and tested to provide the necessary performance requirements to provide worker safety. To eliminate any potential adverse impact on CP system performance, a Dairyland SSD is recommended to decouple the mat from the pipeline and eliminate any interaction with your CP system.



DECOUPLING TANK GROUNDING SYSTEMS

APPLICATION OVERVIEW

Local tank grounds, as well as grounding conductors for electrical equipment, will tie the cathodically protected tank to additional in-earth structures, requiring excessive CP current. The tanks must be locally grounded to protect your equipment and your personnel. However, the bond to ground will drastically increase the amount of CP current needed to prevent corrosion. How can you maintain both lightning protection and CP efficiency?

All Dairyland products provide excellent over-voltage protection for lightning effects, as well as AC faults, and block CP current that would otherwise short to your tank grounds. If your tank farm uses insulated joints to aid in DC isolation, the life and quality of the joint can be protected using a Dairyland product. Dairyland’s rugged solid-state construction and fail-safe design will ensure your tank has reliable CP levels and over-voltage protection in place.







## DECOUPLING ELECTRICAL EQUIPMENT

### APPLICATION OVERVIEW

All electrical equipment attached to your pipeline requires a bond to ground to meet code requirements. However, grounded equipment such as motor-operated valves will short any DC current from cathodic protection systems. Your equipment needs to maintain effective grounding paths for safety, while also maintaining DC isolation so that your CP system can effectively protect against corrosion.

One authorized method for providing DC isolation while simultaneously grounding AC for motors and other equipment is to use a Dairyland product certified for use in a safety grounding conductor. Once installed, the decoupler eliminates direct bonds that will short-circuit your CP system, thereby improving system performance. Proper product selection is critical and must factor in hazardous location classification, induced AC, and blocking threshold needs for CP voltage.

#### RECOMMENDED PRODUCTS



## DECOUPLING FROM UTILITY GROUNDING SYSTEMS

### APPLICATION OVERVIEW

Your CP system may be trying to protect your utility's ground rods, greatly increasing demand for DC current and ultimately decreasing cathodic protection to unacceptable levels. This happens if your site's grounding system is tied to the utility's grounding system, bonding the two, forcing your CP system to try to protect the power company grounding system as well.

Your power company can install a Dairyland PCR at the transformer, providing DC isolation and AC grounding between the two systems, thereby isolating your CP system from the power utility grounding system. This will minimize the CP current requirements for your site allowing acceptable CP voltage for protection.

#### RECOMMENDED PRODUCT





# ISOLATION JOINT PROTECTION

## APPLICATION OVERVIEW

Isolation joints are a common way to isolate sections of pipeline and maintain adequate CP voltage. However, they are vulnerable to over-voltage damage from lightning or AC fault events. Voltage can build to dangerous levels on one side of the joint, causing personnel hazards and eventual failure of the insulation. Current can arc over the joint and potentially ignite flammable materials present due to the failed insulation gasket. Damaged areas can occur along miles of pipeline and must be repaired to ensure full insulation, adding to your operation's maintenance costs.

Dairyland supplies a range of devices to protect isolation joints from lightning and AC fault current by limiting the voltage to safe levels while providing a conduction path around the joint. At the same time, a Dairyland decoupler or OVP device will also block DC voltage from cathodic protection on your pipeline, maintaining appropriate CP isolation. Our fail-safe design will always protect your technicians and equipment from dangerous levels of voltage and will never require maintenance.

## RECOMMENDED PRODUCTS







## DECOUPLING POWER CABLE SHEATHS/CASINGS

### APPLICATION OVERVIEW

Pipe-type power cables require effective grounding to protect your personnel and equipment from AC fault current. Any metal casings or lead sheaths that are cathodically protected will also need to be grounded, which can reduce CP values if they are directly connected.

Additionally, underground pipe-type cabling, if located near DC rail systems in an urban setting, can also carry nuisance voltage from passing trains. This extra DC voltage requires a decoupler that is rated to block higher levels of voltage and not short into conduction mode.

Dairyland's ISP is the ideal device for protecting pipe-type power cabling, given its higher DC blocking threshold and AC fault ratings. Stray nuisance voltage from nearby

trains can be isolated at higher levels than other decoupler threshold ratings, preventing unnecessary grounding from slightly higher DC levels.

Installing the ISP in series with the lead sheathing or metal casing will also provide efficient isolation of CP voltage levels by decoupling the cable from the grounding grid. Higher AC fault current ratings and a fail-safe design will ensure that the ISP will protect personnel and equipment from potential fault events.

RECOMMENDED  
PRODUCT



## AIRPORT FUELING SYSTEMS ISOLATION/BONDING

### APPLICATION OVERVIEW

Your airport fueling system requires cathodic protection to prevent corrosion. Underground piping is typically sectionalized via insulated joints to maintain proper levels of DC current. However, during an AC fault or lightning event, arcing can occur across a joint with high levels of current, causing damage to your equipment and injury to your personnel.

If your system contains motors or other electrical equipment, their grounding systems can inadvertently short CP current flow to ground, reducing overall efficiency of the CP system. You need a device that can solve safety and efficiency issues and withstand hazardous conditions.

Dairyland offers several solutions to protect against over-voltage while maintaining adequate CP voltage. You can protect

insulated joints, using an appropriately rated over-voltage protector, such as our OVP or OVP2. Rated to handle AC fault current and lightning, they will simultaneously block the flow of DC current, maintaining your cathodic protection system. The OVP and OVP2 (Division 2) are UL certified and specified by the US Army Corp of Engineers for worldwide use in military airport fueling systems. Their fail-safe design ensures the safety of your personnel during a fault event, and the solid-state components give our devices a virtually unlimited lifespan.

RECOMMENDED  
PRODUCTS



OVP OVP2





## HIGH-ENERGY RAIL FAULT PROTECTION

### APPLICATION OVERVIEW

Railroad systems are increasingly required to operate in common corridors with power transmission and distribution lines presenting new equipment protection challenges. Damaging AC faults caused by failure of power utility equipment on overhead power lines present high-energy, long-duration events that typical lightning surge protective devices are not capable of withstanding. These events pose a risk to track-connected signaling and crossing warning systems as well as other protective equipment.

Dairyland's Overwatch HEFPD is a new class of device, designed using our decades of experience in high-energy applications. With a design featuring Dairyland's proven solid-state technology, Overwatch can withstand the powerful, long-duration events caused by AC faults, keeping sensitive track-connected equipment protected. Overwatch is rated up to 4000 amps for a 12 cycle (0.2 second) duration AC fault event as defined in AREMA Manual Part 11.3.7, while also meeting the applicable requirements of primary surge protection as defined in 11.3.1.

RECOMMENDED  
PRODUCT



OVERWATCH



## MARINE GALVANIC ISOLATION

### APPLICATION OVERVIEW

Whenever your boat is connected to shore power, the hull and drive system are connected to the shore grounding system and to other adjacent vessels (also connected to shore power) via the grounding conductor in the shore power cable. This connection, while required for safety, creates a galvanic corrosion cell involving the dissimilar metals between boats and between a boat and the shore grounding system putting your boat at risk.

Boat owners can virtually eliminate this galvanic corrosion problem by inserting an appropriately rated and certified Galvanic Isolator in series with the grounding conductor of the ship-to-shore power cable. The function of the Galvanic Isolator is to provide AC continuity of the grounding conductor (required for safety in the event of an AC fault) and to simultaneously block the flow of corrosion-causing galvanic current.

RECOMMENDED  
PRODUCTS



GALVANIC ISOLATORS



# THANK YOU

At Dairyland, we believe that everyone should have an opportunity to flourish. From our company culture with an emphasis on altruistic giving, to our rugged products and reliable technical support, we are using our business to make a safer world. That's why we put a portion of our revenue towards addressing needs in our communities, as well as natural disasters, conflict, injustice, and poverty around the globe. When you do business with Dairyland, you are furthering our Live Engaged initiative, and truly helping to make a safer world.



[DAIRYLAND.COM/LIVE-ENGAGED](https://dairyland.com/live-engaged)







LIVE ENGAGED

# INVESTING IN A SAFER WORLD

Since the company was founded in 1983, Dairyland’s owners have emphasized the importance of investing in others. Today, investment in people remains a core value that shapes our company culture, impacting how we treat our customers and how we interact with the world around us. In 2018, Dairyland created Live Engaged; an outward expression of our company culture and core values with a goal of sharing our vision with others, inspiring them to consider how they might Live Engaged.

SO WHAT DOES IT MEAN TO LIVE ENGAGED?

Our goal is for Live Engaged to be an ever-expanding network for good, focused on living intentionally to improve ourselves as individuals while working to positively impact the world around us. Live Engaged means becoming healthier individuals, happier employees, and doing our part to create a safer world for everyone in it. At Dairyland, we focus on the following four elements that encompass the whole spirit of Live Engaged:

**INVEST IN YOURSELF:** As the old saying goes, you cannot pour from an empty cup. This sentiment is our starting point. In order to Live Engaged, we must make time for ourselves so we can thrive as individuals and bring more to those around us.

**SHOW UP FOR YOUR CIRCLE:** Our circle is defined by those who are most important and ever-present in our lives. In choosing to meaningfully connect with family, friends, coworkers, and neighbors, we are communicating how much we value them and our relationships. We Live Engaged by being present with those closest to us through the ups and downs of life.

**STRENGTHEN YOUR COMMUNITY:** There is no greater place to start giving your time, talents, and resources than your own community. Many of us experience a sense of home, comfort, and safety in our communities, but this may not be the same experience for every community member. When we partner with local organizations, we free up their resources so they can spend their time in the community helping those who need it most.

**TRANSFORM THE WORLD:** Live Engaged is about standing together against poverty, injustice, and suffering around the globe. Our team works hard to deliver industry-leading products to our customers, knowing that in each sale a portion of our revenue is donated to partner organizations who are making an impact across the globe.



MEET OUR PARTNERS

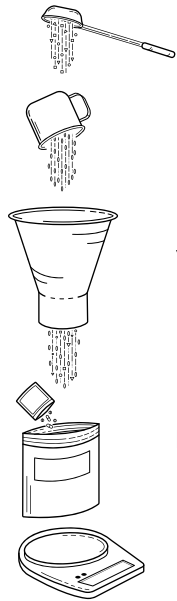
Dairyland partners with organizations that specialize in humanitarian relief and development work all around the world. These organizations each have a proven record of successful transformation in vulnerable communities.

SP	IJM
<p>SAMARITAN'S PURSE INTERNATIONAL RELIEF</p> <p>Samaritan's Purse provides aid to hurting people around the world. They help meet the needs of people who are victims of war, poverty, natural disasters, disease, and famine.</p>	<p>INTERNATIONAL JUSTICE MISSION</p> <p>International Justice Mission is dedicated to partnering with local justice systems around the world to build safe communities, where all are protected from violence and modern slavery.</p>
CI	EJI
<p>COMPASSION INTERNATIONAL</p> <p>Compassion International advocates for children living in poverty. Through sponsorship and holistic child development, they seek to transform lives and create a lasting impact for families, communities, and countries.</p>	<p>EQUAL JUSTICE INITIATIVE</p> <p>Equal Justice Initiative is committed to ending mass incarceration and excessive punishment in the United States, challenging racial and economic injustice, and protecting basic human rights for the most vulnerable in American society.</p>

THANK YOU

When you partner with Dairyland, you help us live out our vision to make a safer world. Together, we can utilize business as a force for good to create an impact in our local communities and around the world.





# WORKING TO END HUNGER

PARTNERING WITH: RISE AGAINST HUNGER

The day started with the rhythmic beeping of a supply truck slowly backing down the driveway. Shortly after, a crew began unloading large bags of rice, soy, dehydrated vegetables, and tubs of supplies. After 12 work stations were assembled, the noise and activity levels quickly increased as gloves and hairnets were handed out, and individuals stepped into their assigned roles. With the strike of a gong (yes, a real one), the Dairyland team and their families got to work assembling meals while lively music and healthy competition filled the space.

## THE DAIRYLAND PICNIC

Every summer the Dairyland team and their families gather for an afternoon of food and fun. At one recent picnic, we had the opportunity to partner with Rise Against Hunger, volunteering our time to pack meals for others affected by food insecurity. We divided into groups – measuring and combining ingredients into individual meal packets before weighing, sealing, and boxing them for distribution around the world. In just under two hours, 52 people packaged 18,576 meals.

Rise Against Hunger is a non-profit organization that is growing a global movement to end hunger by empowering communities, nourishing lives, and responding to emergencies. Across the globe there are 821 million people who don't have enough food to eat\*, with 41 million experiencing life-threatening hunger\*\*. The need for nutrient-dense nourishment is critical. Since early 2020, issues like conflict, extreme weather, and poverty have been compounded by the COVID-19 pandemic, heightening the need for food and relief. Rise Against Hunger not only provides short-term emergency supplies—like the meals our

team packaged—but they also work to empower communities toward sustainable self-sufficiency.

Volunteering together helped meet a critical need in our world and allowed us to think beyond ourselves, but it was also a great experience for our team to have together – exemplifying what it means to Live Engaged. Everyone—kids, teens, and adults—easily found a role to play, whether ladling ingredients into funnels, labeling individual packages, or restocking heavy bags of supplies. We laughed, bantered, and connected as a team while the music reverberated and a sense of meaningful accomplishment settled around the room.

Logan Tachick said of the event: “This event was so cool to be a part of. All my coworkers and our families were in the same room working for a pretty inspiring movement. I genuinely felt fulfilled and that I was on a mission as I just hauled bags of rice. I couldn't help but keep going!”

Laurie Hucek later commented: “What made the experience most meaningful for me was that an engineer and a homemaker could work shoulder-to-shoulder together for two hours and accomplish so much for a common good. When I looked around at the end of the event, I found I had tears in my eyes at the beauty of everyone working together. What I thought was a simple food drive turned into one of the most meaningful things I have done this year.”







## STRENGTHENING OUR COMMUNITY

BUILDING AN INCLUSIVE SUMMER CAMP



**L**ive Engaged consistently reminds us how important and impactful it is to give our time, talents, and resources to local organizations who, in turn, change the lives of others in the community. Camp Daniel is one example of a non-profit organization making a positive impact in their community. Located near our manufacturing facility in northern Wisconsin, Camp Daniel provides a safe camp experience for kids, teens, and adults with disabilities. Through their summer camping program and year-round activities, they offer each camper a safe and fun camping experience, while meeting their unique physical, social, and emotional needs.

The Camp Daniel campus was purchased in 1996, and from the start, the organization has relied on volunteer time and labor to incrementally construct their camp. This has allowed Camp Daniel to stretch their monetary donations as far as possible and still complete projects at a steady pace.

Dairyland's Manufacturing and Supply Chain teams began consistently volunteering at Camp Daniel in 2021. Through a network of relationships, they became aware of Camp Daniel's urgent need for hard working groups to contribute to a safe and accessible

campus. Team members were trusted to use their expertise on large scale projects like roofing, building retaining walls, digging drainage ditches, and laying pavers. Each time a group volunteered, they organized their rotations to avoid any disruptions to production.

Now that the camp is up and running, Dairyland teams have also interacted directly with campers by staffing carnival games and even getting soaked by the dunk tank. The partnership has been something our team has enjoyed, and they've continued to look for ways to support Camp Daniel.

*It has been such a life-giving and eye-opening experience to serve alongside the Camp Daniel team. Getting to participate in their Camp Carnival Day was the highlight of my summer. This is what it's all about, loving and caring for those in your community in the same way you want to be loved and cared for.*

— Joe Mutchler, Dairyland Manufacturing Floor Lead

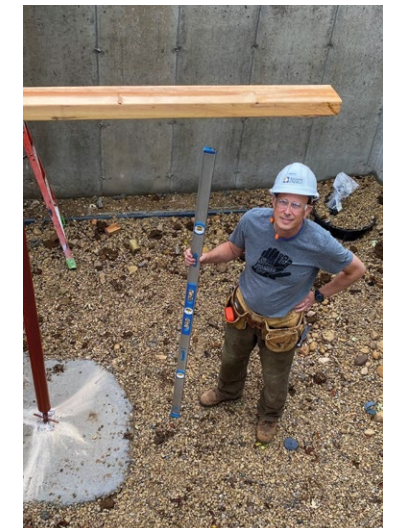
In previous years, Dairyland has even hosted its annual company picnic at Camp Daniel's lakeside pavilion. The beautiful location provides a perfect backdrop for the team to be together, while seeing firsthand the progress made from their months of volunteer work.

Full-time Camp Daniel staff members, Evan and Anissa Hartwig, commented, "Camp Daniel is so thankful for the individuals at Dairyland for taking the time to volunteer with our small non-profit. Their hard work and good attitudes are recognized and so appreciated. Through your kindness and generosity we can change the lives of people with disabilities."

As our partnership extends into the future, the work being done at Camp Daniel will continue to meet a valuable need. Through each interaction with campers, staff at Camp Daniel will continue to deliver a valuable message: that each camper has inherent value.







Our vision of making a safer world not only applies to our rugged products and our reliable service – although they certainly play an important role. We believe that people have inherent value, and that everyone, no matter their economic situation or geographical location, should feel safe in their own homes and be given the opportunity to flourish.

Habitat for Humanity (Habitat) is a global nonprofit organization that helps families build and improve places to call home. Habitat works together with families, local communities, volunteers, and partners from around the world so that more people are able to live in affordable and safe homes. Their advocacy efforts focus on policy reform to remove systemic barriers preventing low-income and historically under-served families from accessing adequate, affordable shelter.\*

For several years, Dairyland employees have volunteered with Habitat for Humanity at numerous build sites around Wisconsin. In late 2021, we were

presented with a new opportunity. Upon learning that a new development was being planned in our own community, we found it was the perfect time to create a more focused impact. We decided to sponsor a home-build for a local family and see the project through to completion.

In addition to funding a portion of the building costs, we decided to ramp up our investment through regular volunteering. Over the course of the build—nearly eight months—teams from Dairyland used their paid volunteer hours to work at the build site.

Our teams often worked side-by-side with the future homeowners—framing, siding, and painting the space. Seasons changed from summer to fall, winter, and finally spring. As they did, we watched the lot transform from a large hole in the ground to a beautiful place for the family of six to call home.

Originally from Kosovo, Nexhmedin and Liridona moved to the United States as refugees of war in

the late 1990s and made Wisconsin home. With their four children, they had spent years dreaming about, planning for, and investing in their new place. They looked forward to experiencing many firsts: welcoming friends over, the children having their own bedrooms, and utilizing their backyard for outdoor games and gatherings.

After many months of hard work, their home was complete and they were handed the keys. “We value keeping our family together and living happily in our house,” said Nexhmedin.

For the Dairyland team, this particular Habitat project felt different. Being able to see the project through from start to completion allowed us to witness firsthand the impact it was making. Not only did the team leave the site full of pride in the home they helped build, but also with a greater connection to the homeowners and the Stoughton community.

It is rewarding to see firsthand the progression of this house over the past year. The Dairyland team enjoyed many great staff, crew, and family interactions as we worked together on siding, flooring, and other hands-on projects at the build site. It was a great feeling to play a role in transforming the space from an empty lot to a home for a deserving family in our community.

— Mike Tachick, Dairyland President







# WELCOME TO THE LIVE ENGAGED COMMUNITY

Since 1983, our goal at Dairyland has been to make a safer world. This is accomplished not only by manufacturing rugged and reliable products, but also through a solution-oriented culture that provides exceptional customer service and support. Throughout our industry, we strive to show people how much we value them through our product support, technical resources, and customer service.

We also believe in using business for good, and through our Live Engaged initiative we live intentionally to positively impact the world around us. That’s why we put a portion of our revenue towards addressing needs in our communities, as well as natural disasters, conflict, injustice, and poverty around the globe.

We are forming the Live Engaged Community to unite people throughout our industry with a goal of inspiring each other to find ways to give back in our own circles, communities, and around the globe.

If this sounds like you, please join us by scanning the QR code below.

## LIVE ENGAGED COMMUNITY EVENTS

ANNUAL WELLNESS CHALLENGE

Every year from May to October, we invest in ourselves by participating in a themed community challenge to boost our physical and emotional health. Whether your preferred method of exercise is walking, running, biking, or line dancing, there’s a spot for you. Those who complete the six-month challenge will receive a custom patch to commemorate the achievement.



Dairyland.com/live-engaged-community

LIVE ENGAGED VOLUNTEER DAY

Partner with community members around the globe for Live Engaged Volunteer Day (LEVD). This service event occurs annually in early October. Don’t let the name fool you—LEVD lasts for an entire week! To join, choose an organization that matters to you, select a day that works with your schedule, and sign up to volunteer in your community. These small yet significant acts not only strengthen our individual communities, they unite our industry to make a positive difference in our world.



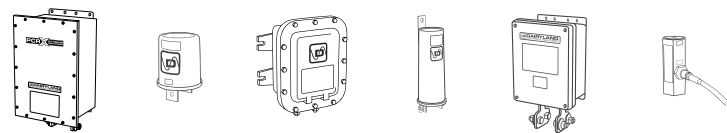


# FIND THE RIGHT SOLUTION FOR YOUR PROBLEM

## OUR TRAINED STAFF IS HERE TO HELP

Dairyland products can be used to address numerous industry applications. In addition to providing high performance products, Dairyland regularly assists customers with complete technical guidance on various applications relating to isolation, grounding, over-voltage protection, and associated issues.

We know that your time is valuable and our team is prepared to provide thorough, accurate assistance for all of your needs. We look forward to serving you.



DAIRYLAND.COM // 608.877.9900





Positive  
(+)



SCAN FOR  
DIGITAL CATALOG

Positive  
(+)

[WWW.DAIRYLAND.COM](http://WWW.DAIRYLAND.COM)