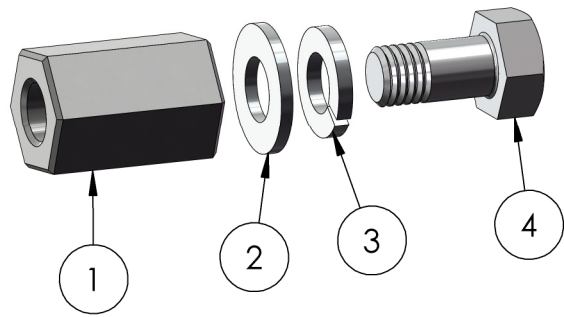
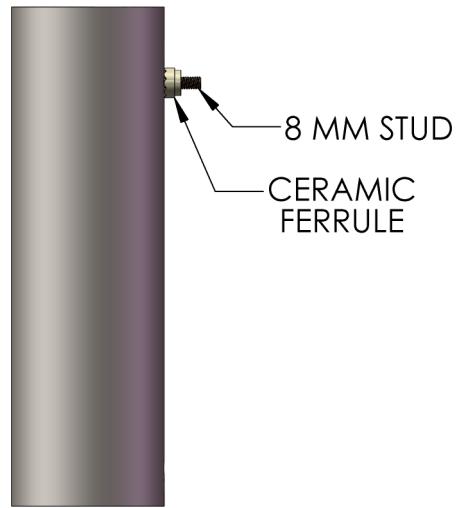


LINE NO.	DOCUMENT NUMBER	DESCRIPTION	QTY.
1	2523	NUT HEX COUPLING SSD/OVP2 PLATED	1
2	1194	WASHER FLAT 5/16"	1
3	1195	WASHER SPLIT LOCK 5/16"	1
4	1199	SCREW HEX M8-1.25X16MM	1
5	3452	TEMPLATE - BRAZED STUD INSTALLATION	1
6	3041	TEF-GEL	1



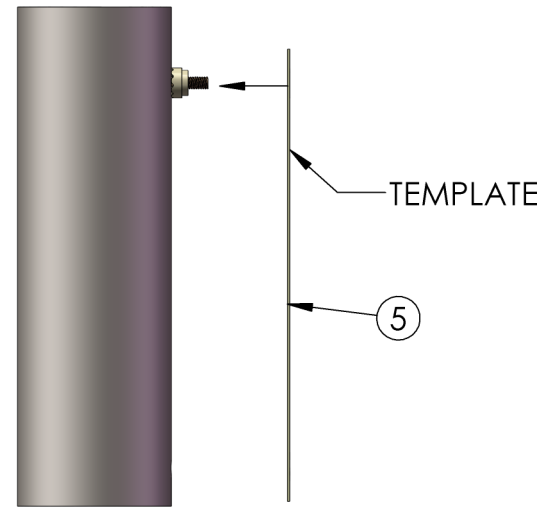
STEP 1

WELD TOP PIN BRAZED STUD (SUPPLIED BY CUSTOMER) IN POSITION LEAVE CERAMIC FERRULE IN PLACE



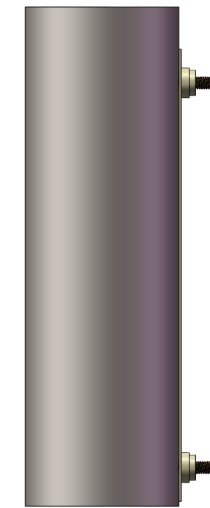
STEP 2

PLACE TEMPLATE OVER CERAMIC ON TOP STUD



STEP 3

WELD BOTTOM STUD USING TEMPLATE AS GUIDE



STEP 4

REMOVE TEMPLATE AND BOTH CERAMIC FERRULES, STUD INSTALLATION COMPLETE



STEP 5

PLACE ONE 8mm FLAT WASHER ON EACH STUD AND ADD TEFGEL TO THE THREADS. PLACE THE HEX COUPLING NUT WHERE SHOWN AND THREAD IT ONTO THE BOTTOM STUD.



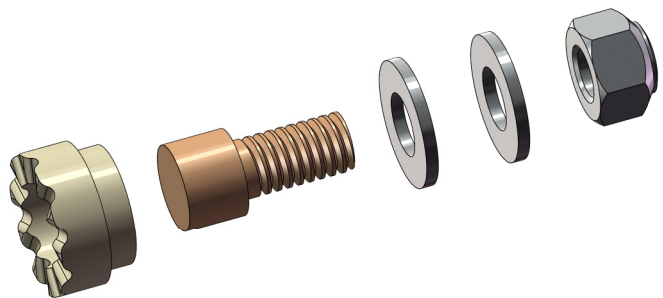
STEP 6

PLACE A LOCK WASHER AND FLAT WASHER OVER THE 8mm BOLT AND THREAD IT INTO THE HEX COUPLING NUT



STEP 7

PLACE AN 8mm FLAT WASHER ON THE TOP STUD FOLLOWED BY AN 8mm LOCKNUT AND SECURELY TIGHTEN. THEN SECURELY TIGHTEN THE BOTTOM 8mm BOLT.



8mm PIN BRAZED STUD AND FERRULE FURNISHED BY USER

ANSI Y14.5M 1994 APPLIES
 UNLESS NOTED
 UNITS: INCHES
 3-PLACE: ±.005
 2-PLACE: ±.015
 1-PLACE / FRAC: ±.03
 ANGULAR: ±1



DAIRYLAND
 ELECTRICAL
 INDUSTRIES, INC.
 P.O. BOX 187
 STOUGHTON,
 WI 53589
 608-877-9900
 DAIRYLAND.COM

DESCRIPTION				
HCN-M8 INSTALLATION				
DOCUMENT #	REV	DATE DRAWN	DWG SIZE	DATE APPROVAL
100047	B	2014-01-10	B	2019-03-14
SCALE 1:5	DRAWN: JPW	SHEET: 1 OF 1	DWG APPROVAL: JWV	