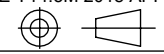



### TABLE OF CONTENTS

| SHEET NO. | PRODUCT | DESCRIPTION                              |
|-----------|---------|--|
| 2         | PCR     | UFB INSTALLATION WITH PCR - SMALL FLANGE |
| 3         | PCR     | UFB INSTALLATION WITH PCR - SMALL FLANGE |
| 4         | PCR     | UFB INSTALLATION WITH PCR - LARGE FLANGE |
| 5         | PCR     | UFB INSTALLATION WITH PCR - LARGE FLANGE |

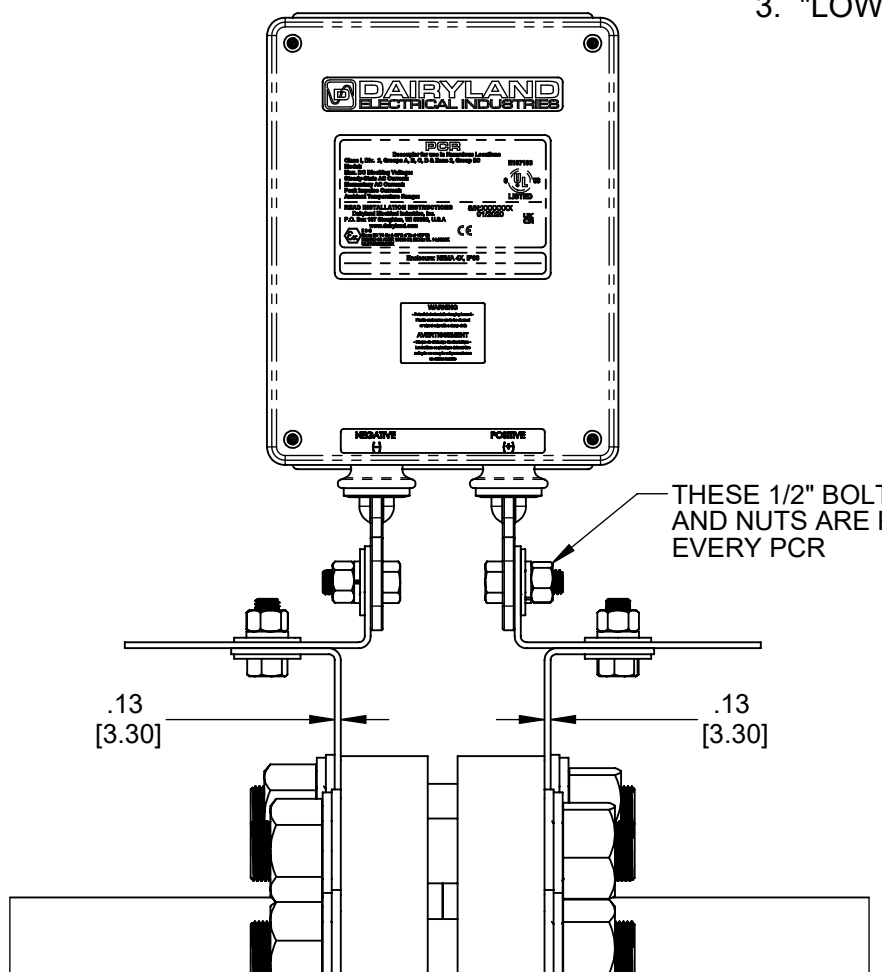
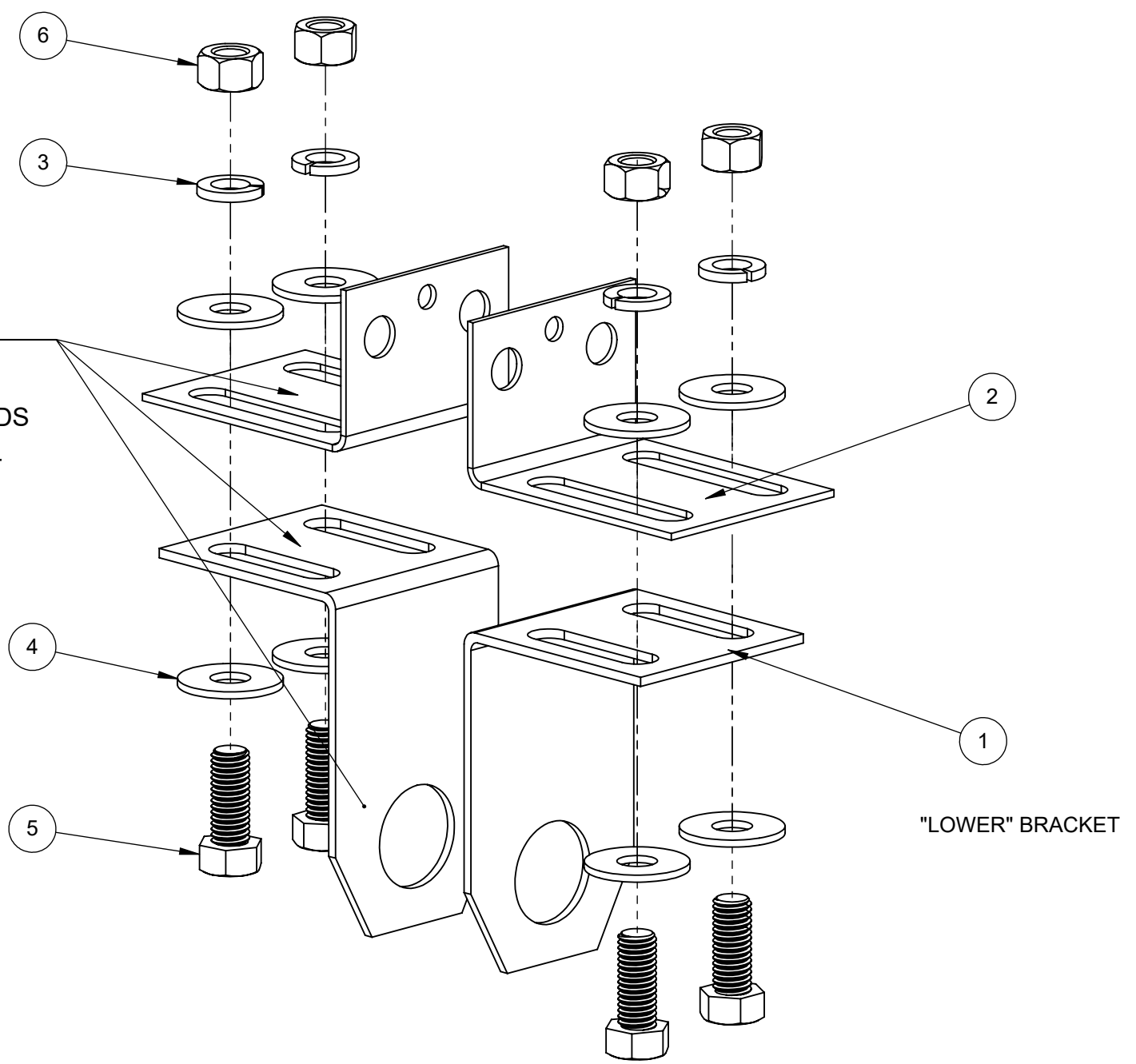
|   |   |  |   |  |   |                       |
|---|---|--|---|--|---|-----------------------|
| ASME Y14.5M 2018 APPLIES<br><br>UNLESS OTHERWISE SPECIFIED<br>DIMENSIONS ARE IN INCHES.<br>COMPUTER-GENERATED DRAWING<br>DO NOT EDIT MANUALLY. | MATERIAL:<br><br><p style="text-align: center;"><b>NA</b></p> FINISH:<br><br><p style="text-align: center;"><b>NA</b></p>   | DRAWN:<br><p style="text-align: center;"><b>SAB</b></p> DWG APPROVAL:<br><p style="text-align: center;"><b>RJH</b></p> | DATE DRAWN:<br><p style="text-align: center;"><b>2/10/2022</b></p> DATE APPROVAL:<br><p style="text-align: center;"><b>09/30/2022</b></p> |  <b>DAIRYLAND ELECTRICAL INDUSTRIES, INC.</b><br><small>P.O. BOX 187<br/>STOUGHTON, WI 53589<br/>608-877-9900</small> | TITLE:<br><p style="font-size: 1.2em;"><b>UFB INSTALLATION INSTRUCTIONS</b></p> |                       |
| .XXX = ±.005"<br>.XX = ±.01"<br>.X = ±.03"<br>ANGLES = ±1°  | THE INFORMATION CONTAINED IN THIS DRAWING IS THE SOLE PROPERTY OF DAIRYLAND ELECTRICAL INDUSTRIES, INC. ANY REPRODUCTION IN PART OR WHOLE, WITHOUT THE WRITTEN PERMISSION OF DAIRYLAND ELECTRICAL INDUSTRIES, INC. IS PROHIBITED. | SHEET: <b>1</b> OF <b>5</b>  | DWG SIZE: <b>B</b>  | SCALE: <b>1:4</b>  | REV: <b>B</b>   | PART #: <b>100146</b> |

| ITEM NO. | PART NUMBER           | DESCRIPTION                          | QTY |
|----------|-----------------------|--------------------------------------|-----|
| 1        | 4791-1 THROUGH 4791-5 | UFB LOWER BRACKET                    | 2   |
| 2        | 4793                  | UFB UPPER BRACKET                    | 2   |
| 3        | 1576                  | WASHER SPLIT LOCK 1/2"               | 4   |
| 4        | 1020                  | WASHER FLAT 1/2" 1.38 ODX0.09" THICK | 8   |
| 5        | 1019                  | BOLT HEX 1/2-13X1.250"               | 4   |
| 6        | 1021                  | NUT HEX 1/2-13                       | 4   |
| 7        | 3041                  | TEF-GEL                              | 1   |

KIT #: 4792-1 TO 4792-5  
DEPENDING ON FLANGE DIMENSION

APPLY THIN LAYER OF TEFGEL (ITEM 7) ON METAL-TO-METAL INTERFACES BEFORE ASSEMBLY

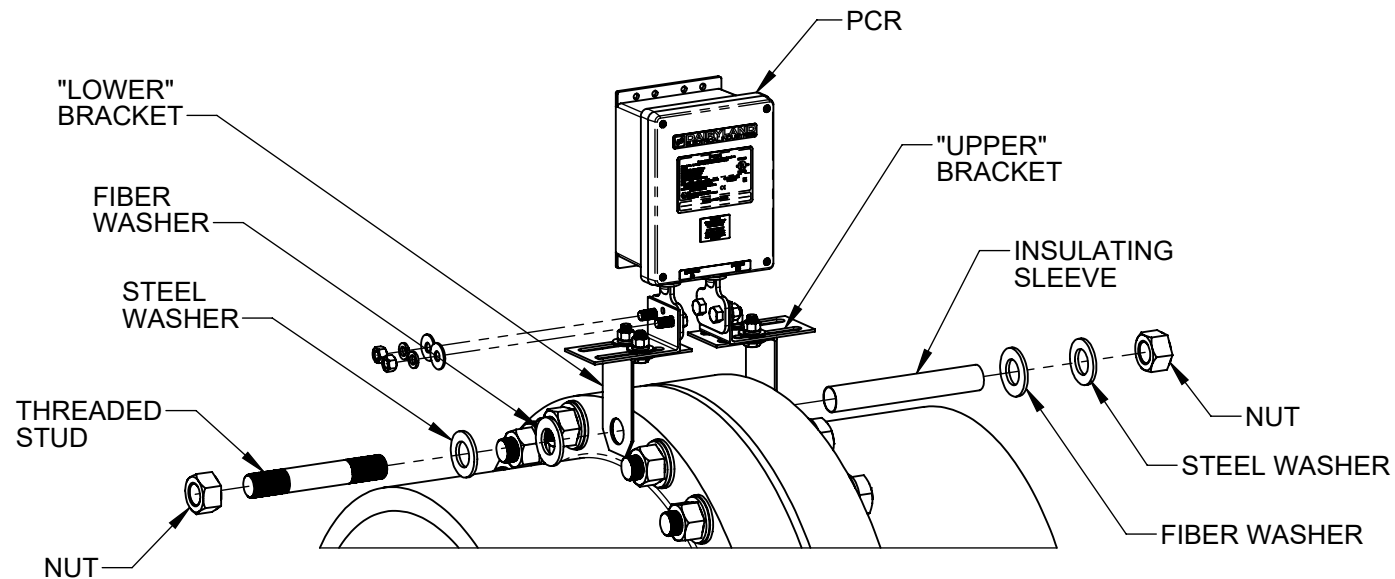
- "UPPER" BRACKET TO PCR TERMINAL PADS (6 PLACES)
- "UPPER" BRACKET TO "LOWER" BRACKET
- "LOWER" BRACKET TO FLANGE FACE



MATERIAL THICKNESS FOR DETERMINING ADDED SLEEVE LENGTH. SEE NOTE 2 ON SHEET 5.

"LOWER" BRACKET DOCUMENT NUMBER WILL VARY DEPENDING ON THE FLANGE DIMENSION

|   |   |                             |   |               |  |
|---|---|-----------------------------|---|---------------|--|
| ASME Y14.5M 2018 APPLIES<br>  | MATERIAL:<br><br>NA   | DRAWN:<br><b>SAB</b>        | DATE DRAWN:<br><b>2/10/2022</b>                           |               | <b>DAIRYLAND ELECTRICAL INDUSTRIES, INC.</b>                         |
| UNLESS OTHERWISE SPECIFIED DIMENSIONS ARE IN INCHES. COMPUTER-GENERATED DRAWING DO NOT EDIT MANUALLY. | FINISH:<br><br>NA   | DWG APPROVAL:<br><b>RJH</b> | DATE APPROVAL:<br><b>09/30/2022</b>                       |               | P.O. BOX 187<br>STOUGHTON, WI 53589<br>608-877-9900<br>DAIRYLAND.COM |
| <b>.XXX = ±.005"</b><br><b>.XX = ±.01"</b><br><b>.X = ±.03"</b><br><b>ANGLES = ±1°</b>                | THE INFORMATION CONTAINED IN THIS DRAWING IS THE SOLE PROPERTY OF DAIRYLAND ELECTRICAL INDUSTRIES, INC. ANY REPRODUCTION IN PART OR WHOLE, WITHOUT THE WRITTEN PERMISSION OF DAIRYLAND ELECTRICAL INDUSTRIES, INC. IS PROHIBITED. |                             | TITLE:<br><b>UFB INSTALLATION WITH PCR - SMALL FLANGE</b> |               |  |
| SHEET: <b>2</b> OF <b>5</b>   |   | DWG SIZE: <b>B</b>          | SCALE: <b>1:8</b>   | REV: <b>A</b> | PART #: <b>100146</b>  |



THE UFB KIT CONSISTS OF (4) NICKEL PLATED COPPER BRACKETS, THE REQUIRED ASSEMBLY HARDWARE AND CORROSION INHIBITOR (TEFGEL,) FOR MOUNTING ANY PCR, SSD, AND OVP2 MODEL TO AN INSULATED FLANGE OF THE HOLE DIAMETER (OR ANSI # CLASS AND PIPE DIAMETER) FOR WHICH IT WAS ORDERED.

1. REMOVE THE BOLT OR THREADED STUD THAT WILL BE USED FOR MOUNTING. IT IS RECOMMENDED THE PCR IS MOUNTED TO THE TOPMOST BOLT/STUD OF THE FLANGE ON A HORIZONTAL PIPE.

2. IT IS RECOMMENDED THAT A NEW INSULATING SLEEVE BE MADE THAT IS 1/4" LONGER THAN THE SLEEVE PRESENTLY ON THE FLANGE BOLT TO BE USED FOR THE MOUNTING BRACKETS TO ACCOUNT FOR THE 1/8" THICKNESS OF THE TWO "LOWER" MOUNTING BRACKETS INSTALLED AGAINST EACH FLANGE FACE. IF A NEW LONGER SLEEVE IS USED, REPLACE THE OLD SLEEVE WITH THE NEW SLEEVE.

3. THE INSULATING COATING ON EACH FLANGE FACE MUST BE REMOVED WHERE "LOWER" BRACKET WILL BE IN CONTACT WITH THE FLANGE FACE.

4. APPLY A THIN COATING OF TEFGEL ON EACH FLANGE FACE WHERE IT WILL BE IN CONTACT WITH "LOWER" BRACKET.

5A. IF THE FLANGE BOLT ONLY HAD A NUT AND WASHERS ON ONE END, THEN REMOVE THIS BOLT AND SLIDE A STEEL WASHER, A FIBER WASHER AND THEN "LOWER" BRACKET, ORIENTED AS REQUIRED AGAINST THE BOLT HEAD. THEN SLIDE THIS BOLT THROUGH THE INSULATING SLEEVE ALL THE WAY THROUGH BOTH FLANGES. ON THE OTHER END OF THE BOLT, INSERT "LOWER" BRACKET ORIENTED AS REQUIRED, THEN A FIBER WASHER FOLLOWED BY A STEEL WASHER AND NUT. TIGHTEN THE NUT ENOUGH TO HOLD THE "LOWER" BRACKETS UPRIGHT BUT SO THEY CAN STILL BE ROTATED BY HAND FOR LATER ALIGNMENT.

5B. IF THE FLANGE BOLT IS A THREADED STUD THAT HAS A NUT AND WASHERS ON EACH END, THEN REMOVE THIS BOLT AND SLIDE A STEEL WASHER, A FIBER WASHER AND THEN "LOWER" BRACKET, ORIENTED AS REQUIRED AGAINST THE NUT. THEN SLIDE THIS BOLT THROUGH THE INSULATING SLEEVE ALL THE WAY THROUGH BOTH FLANGES. ON THE OTHER END OF THE BOLT, INSERT "LOWER" BRACKET ORIENTED AS REQUIRED, THEN A FIBER WASHER FOLLOWED BY A STEEL WASHER AND NUT. TIGHTEN THE NUT ENOUGH TO HOLD THE "LOWER" BRACKETS UPRIGHT BUT SO THEY CAN STILL BE ROTATED BY HAND FOR LATER ALIGNMENT.

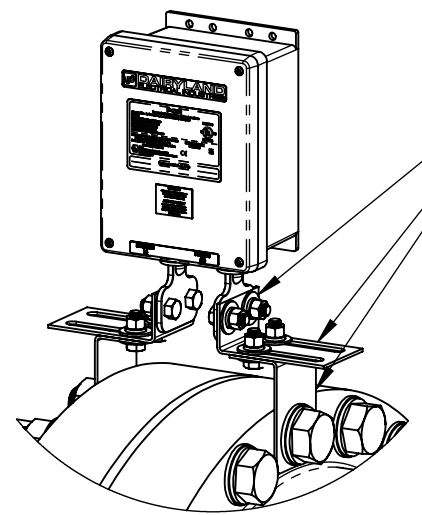
6. IT IS SUGGESTED TO CHECK THE FLANGE FOR ELECTRICAL ISOLATION AFTER INSTALLATION OF LOWER BRACKETS, PRIOR TO INSTALLING THE PCR. THIS ISOLATION CHECK IS TYPICALLY DONE WITH A RADIO FREQUENCY ISOLATION TESTER DEVICE FROM THE RE-INSTALLED BOLT TO EACH FLANGE. THE PCR SHOULD BE TESTED SEPARATELY PER DAIRYLAND TESTING RECOMMENDATIONS FOUND AT DAIRYLAND.COM

7. USING THE HARDWARE THAT WAS FURNISHED IN THE PCR TERMINALS, ATTACH A "UPPER" BRACKET TO THE OUTSIDE OF EACH PCR TERMINAL AS SHOWN. APPLY TEFGEL BETWEEN THE MATING SURFACES. PARTIALLY TIGHTEN THE NUTS SO THE "UPPER" BRACKETS CAN STILL BE ADJUSTED FOR FINAL ALIGNMENT.

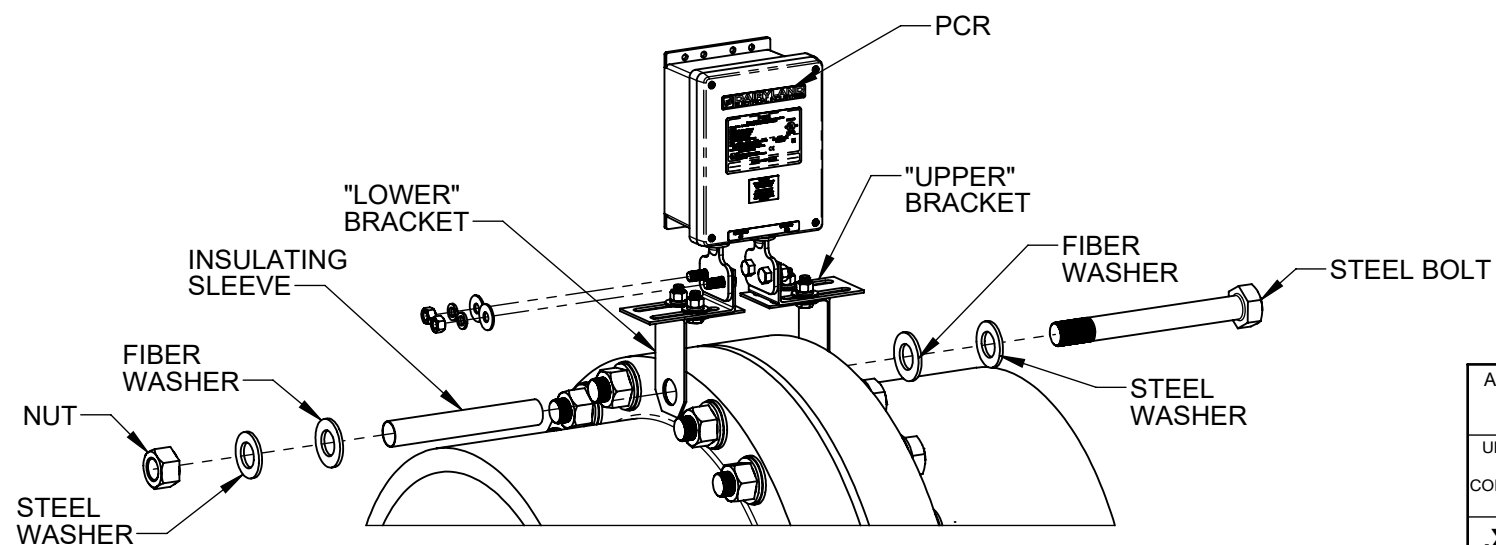
8. NOTE THE POLARITY LABELS ON THE DEVICE AND INSTALL THE NEGATIVE TERMINAL ON THE MORE ELECTRONEGATIVE SIDE OF THE FLANGE (TYPICALLY THE PIPELINE SIDE OR THE SIDE WITH CATHODIC PROTECTION). THE POSITIVE TERMINAL IS INSTALLED ON THE MORE ELECTROPOSITIVE SIDE OF THE FLANGE (TYPICALLY THE STATION SIDE, THE SKID SIDE, OR GROUNDED SIDE).

9. APPLY TEFGEL ON THE TOP SURFACE OF "LOWER" BRACKET WHERE IT WILL BE IN CONTACT WITH BRACKET "UPPER". PLACE THE PCR WITH ITS ASSEMBLED "UPPER" BRACKETS ON TOP OF THE "LOWER" BRACKETS AND CENTER THE PCR BETWEEN THE FLANGES. INSTALL THE BOLTS, WASHERS AND NUTS PROVIDED WITH THE UFB KIT AS SHOWN AND SEMI-TIGHTEN TO SECURE THE "UPPER" AND "LOWER" BRACKETS TOGETHER.

10. ALIGN ALL BRACKETS AS DESIRED AND THEN TIGHTEN ALL NUTS ON ALL BOLTS. CROSS CHECK THAT ALL NUTS HAVE BEEN SECURELY TIGHTENED AND THAT THE FLANGE BOLT NUT, OR NUTS, HAVE BEEN TORQUED TO THE REQUIRED VALUE.



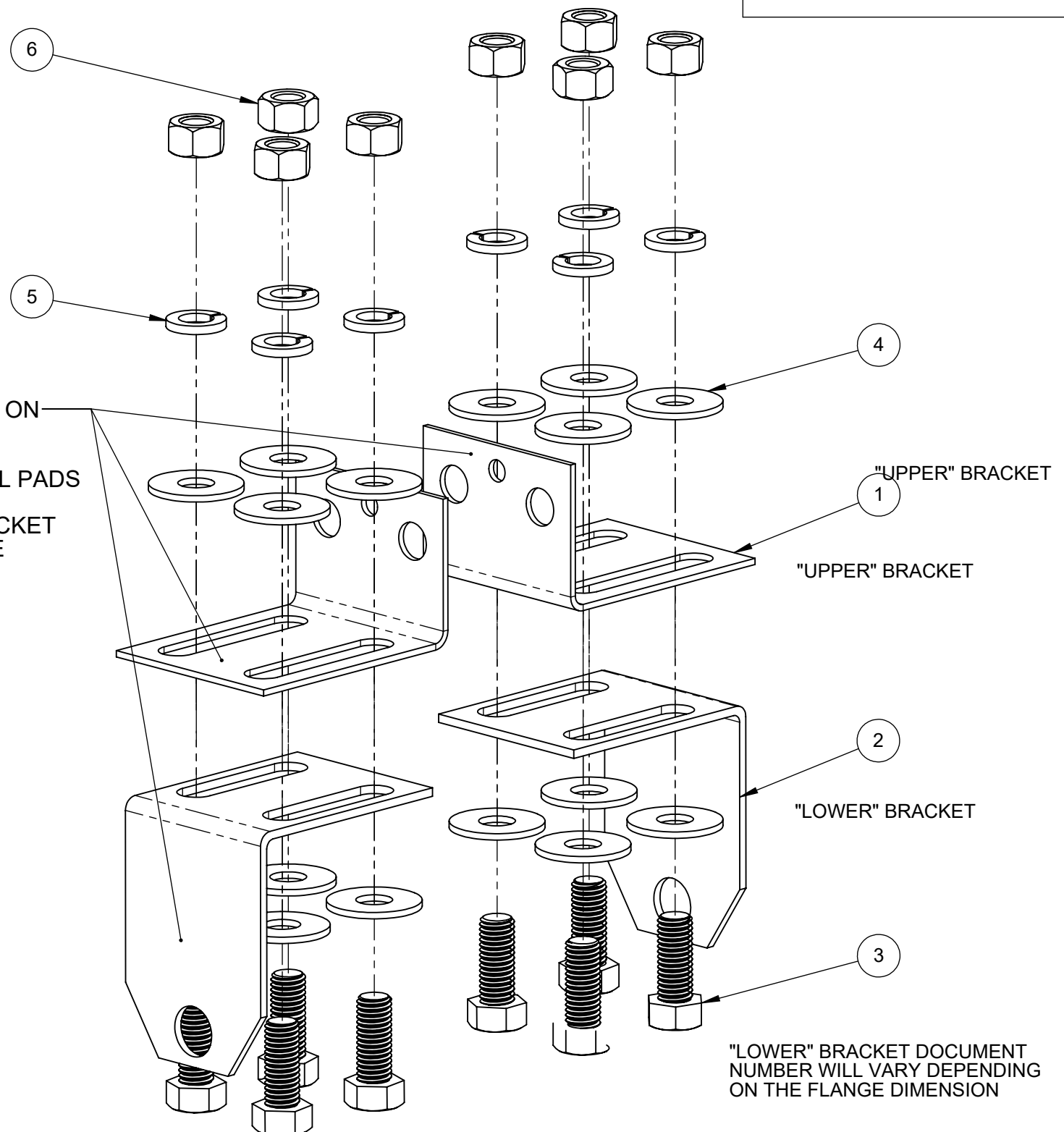
THIS VIEW APPLIES TO BOTH DRAWINGS (TOP AND BOTTOM)  
 APPLY THIN LAYER OF TEFGEL ON METAL-TO-METAL INTERFACES BEFORE ASSEMBLY  
 1. "LOWER" BRACKET TO FLANGE FACE  
 2. "UPPER" BRACKET TO "LOWER" BRACKET  
 3. "UPPER" BRACKET TO PCR TERMINAL PADS (6 PLACES)



|   |                        |   |                                     |  |
|---|------------------------|---|-------------------------------------|--|
| ASME Y14.5M 2018 APPLIES<br>UNLESS OTHERWISE SPECIFIED DIMENSIONS ARE IN INCHES. COMPUTER-GENERATED DRAWING DO NOT EDIT MANUALLY.   | MATERIAL:<br><b>NA</b> | DRAWN:<br><b>SAB</b>                                      | DATE DRAWN:<br><b>2/10/2022</b>     | <br>P.O. BOX 187<br>STOUGHTON, WI 53589<br>608-877-9900<br>DAIRYLAND.COM |
| .XXX = ±.005"<br>.XX = ±.01"<br>.X = ±.03"<br>ANGLES = ±1°  | FINISH:<br><b>NA</b>   | DWG APPROVAL:<br><b>RJH</b>                               | DATE APPROVAL:<br><b>09/30/2022</b> |  |
| THE INFORMATION CONTAINED IN THIS DRAWING IS THE SOLE PROPERTY OF DAIRYLAND ELECTRICAL INDUSTRIES, INC. ANY REPRODUCTION IN PART OR WHOLE, WITHOUT THE WRITTEN PERMISSION OF DAIRYLAND ELECTRICAL INDUSTRIES, INC. IS PROHIBITED. |                        | TITLE:<br><b>UFB INSTALLATION WITH PCR - SMALL FLANGE</b> |                                     |  |
| SHEET: <b>3</b> OF <b>5</b>   |                        | DWG SIZE: <b>B</b>  | SCALE: <b>1:8</b>                   | REV: <b>B</b> PART #: <b>100146</b>                                      |

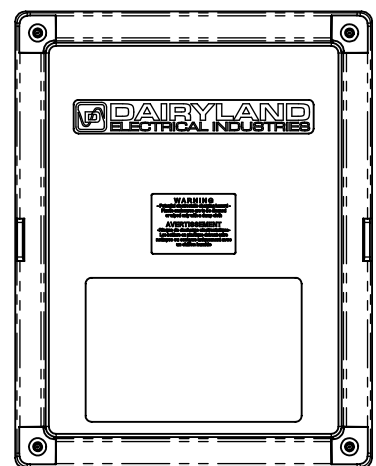
| LINE NO. | DOCUMENT NUMBER        | DESCRIPTION                          | QTY. |
|----------|------------------------|--------------------------------------|------|
| 1        | 4793                   | UFB UPPER BRACKET                    | 2    |
| 2        | 4791-6 THROUGH 4791-10 | UFB LOWER BRACKET                    | 2    |
| 3        | 1019                   | BOLT HEX 1/2-13X1.250"               | 8    |
| 4        | 1020                   | WASHER FLAT 1/2" 1.38 ODX0.09" THICK | 16   |
| 5        | 1576                   | WASHER SPLIT LOCK 1/2"               | 8    |
| 6        | 1021                   | NUT HEX 1/2-13                       | 8    |
| 7        | 3041                   | TEF-GEL                              | 1    |

KIT #: 4792-6 TO 4792-10  
DEPENDING ON FLANGE DIMENSION

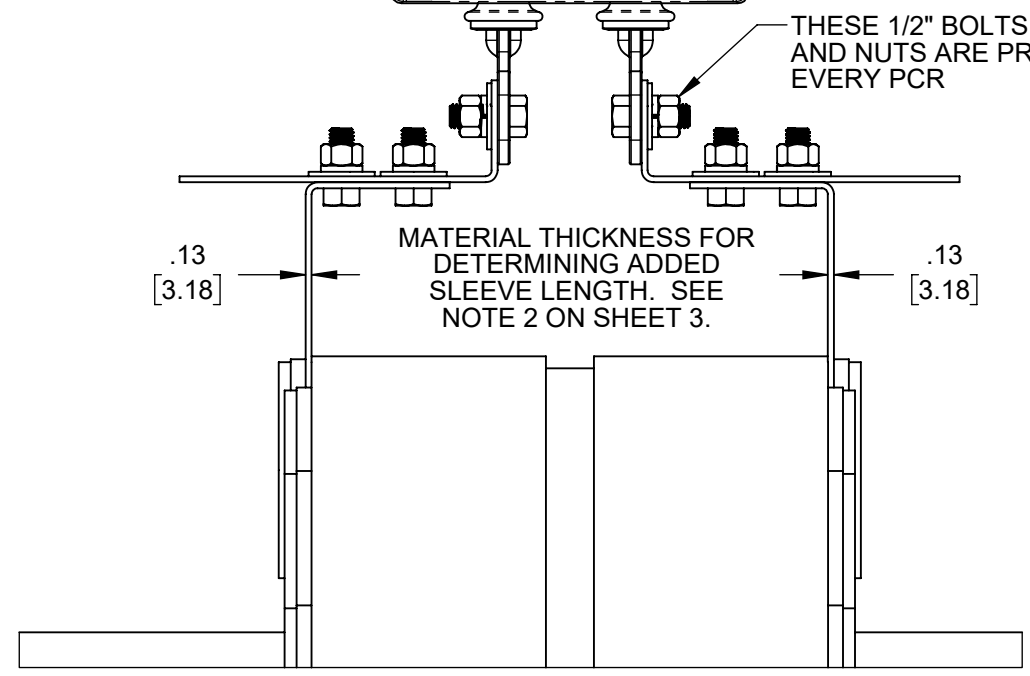


APPLY THIN LAYER OF TEFGEL (ITEM 7) ON METAL-TO-METAL INTERFACES BEFORE ASSEMBLY

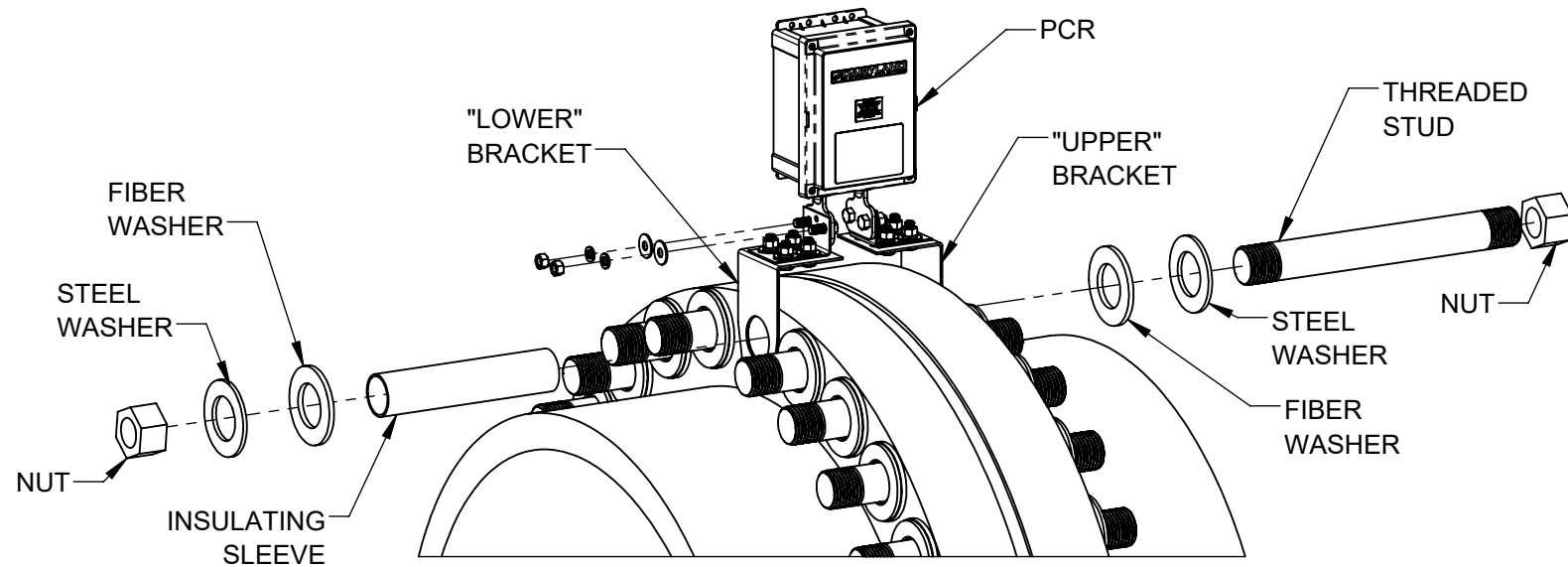
- "UPPER" BRACKET TO PCR TERMINAL PADS (6 PLACES)
- "UPPER" BRACKET TO "LOWER" BRACKET
- "LOWER" BRACKET TO FLANGE FACE



THESE 1/2" BOLTS, WASHERS AND NUTS ARE PROVIDED WITH EVERY PCR



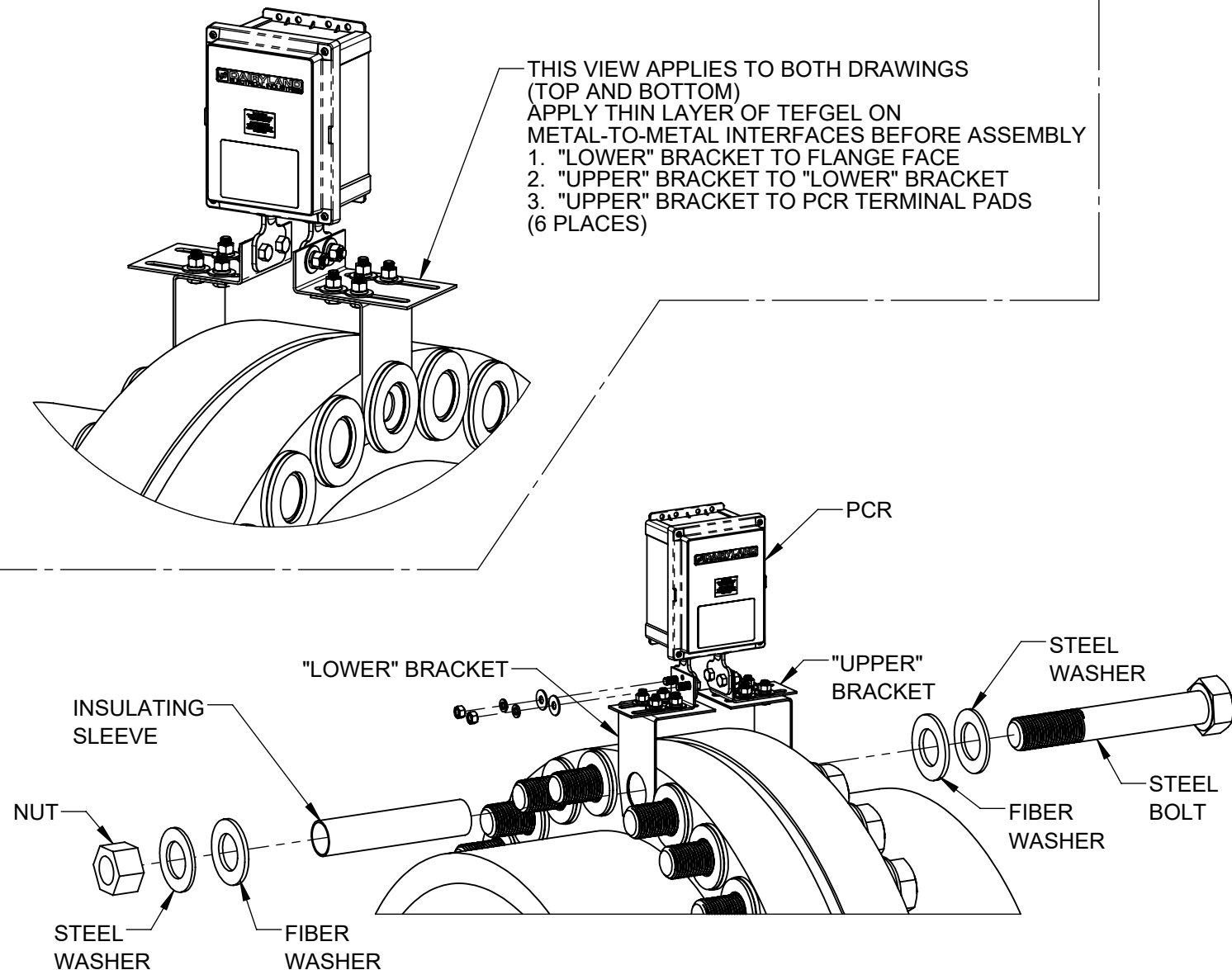
|   |   |                             |   |  |
|---|---|-----------------------------|---|--|
| ASME Y14.5M 2018 APPLIES<br>  | MATERIAL:<br><b>NA</b>  | DRAWN:<br><b>SAB</b>        | DATE DRAWN:<br><b>2/14/2022</b>                           | <br><b>DAIRYLAND ELECTRICAL INDUSTRIES, INC.</b><br>P.O. BOX 187<br>STOUGHTON, WI 53589<br>608-877-9900<br>DAIRYLAND.COM |
| UNLESS OTHERWISE SPECIFIED DIMENSIONS ARE IN INCHES. COMPUTER-GENERATED DRAWING DO NOT EDIT MANUALLY. | FINISH:<br><b>NA</b>  | DWG APPROVAL:<br><b>RJH</b> | DATE APPROVAL:<br><b>09/30/2022</b>                       |  |
| <b>.XXX = ±.005"</b><br><b>.XX = ±.01"</b><br><b>.X = ±.03"</b><br><b>ANGLES = ±1°</b>                | THE INFORMATION CONTAINED IN THIS DRAWING IS THE SOLE PROPERTY OF DAIRYLAND ELECTRICAL INDUSTRIES, INC. ANY REPRODUCTION IN PART OR WHOLE, WITHOUT THE WRITTEN PERMISSION OF DAIRYLAND ELECTRICAL INDUSTRIES, INC. IS PROHIBITED. |                             | TITLE:<br><b>UFB INSTALLATION WITH PCR - LARGE FLANGE</b> |  |
| SHEET: <b>4</b> OF <b>5</b>   |   | DWG SIZE: <b>B</b>          | SCALE: <b>1:8</b>   | REV: <b>B</b> PART #: <b>100146</b>  |



THE UFB KIT CONSISTS OF (4) NICKEL PLATED COPPER BRACKETS, THE REQUIRED ASSEMBLY HARDWARE AND CORROSION INHIBITOR (TEFGEL,) FOR MOUNTING ANY PCR, SSD, AND OVP2 MODEL TO AN INSULATED FLANGE OF THE HOLE DIAMETER (OR ANSI # CLASS AND PIPE DIAMETER) FOR WHICH IT WAS ORDERED.

1. REMOVE THE BOLT OR THREADED STUD THAT WILL BE USED FOR MOUNTING. IT IS RECOMMENDED THE PCR IS MOUNTED TO THE TOPMOST BOLT/STUD OF THE FLANGE ON A HORIZONTAL PIPE.
2. IT IS RECOMMENDED THAT A NEW INSULATING SLEEVE BE MADE THAT IS 1/4" LONGER THAN THE SLEEVE PRESENTLY ON THE FLANGE BOLT TO BE USED FOR THE MOUNTING BRACKETS TO ACCOUNT FOR THE 1/8" THICKNESS OF THE TWO "LOWER" MOUNTING BRACKETS INSTALLED AGAINST EACH FLANGE FACE. IF A NEW LONGER SLEEVE IS USED, REPLACE THE OLD SLEEVE WITH THE NEW SLEEVE.
3. THE INSULATING COATING ON EACH FLANGE FACE MUST BE REMOVED WHERE "LOWER" BRACKET WILL BE IN CONTACT WITH THE FLANGE FACE.
4. APPLY A THIN COATING OF TEFGEL ON EACH FLANGE FACE WHERE IT WILL BE IN CONTACT WITH "LOWER" BRACKET.
- 5A. IF THE FLANGE BOLT ONLY HAD A NUT AND WASHERS ON ONE END, THEN REMOVE THIS BOLT AND SLIDE A STEEL WASHER, A FIBER WASHER AND THEN "LOWER" BRACKET, ORIENTED AS REQUIRED AGAINST THE BOLT HEAD. THEN SLIDE THIS BOLT THROUGH THE INSULATING SLEEVE ALL THE WAY THROUGH BOTH FLANGES. ON THE OTHER END OF THE BOLT, INSERT "LOWER" BRACKET ORIENTED AS REQUIRED, THEN A FIBER WASHER FOLLOWED BY A STEEL WASHER AND NUT. TIGHTEN THE NUT ENOUGH TO HOLD THE "LOWER" BRACKETS UPRIGHT BUT SO THEY CAN STILL BE ROTATED BY HAND FOR LATER ALIGNMENT.
- 5B. IF THE FLANGE BOLT IS A THREADED STUD THAT HAS A NUT AND WASHERS ON EACH END, THEN REMOVE THIS BOLT AND SLIDE A STEEL WASHER, A FIBER WASHER AND THEN "LOWER" BRACKET, ORIENTED AS REQUIRED AGAINST THE NUT. THEN SLIDE THIS BOLT THROUGH THE INSULATING SLEEVE ALL THE WAY THROUGH BOTH FLANGES. ON THE OTHER END OF THE BOLT, INSERT "LOWER" BRACKET ORIENTED AS REQUIRED, THEN A FIBER WASHER FOLLOWED BY A STEEL WASHER AND NUT. TIGHTEN THE NUT ENOUGH TO HOLD THE "LOWER" BRACKETS UPRIGHT BUT SO THEY CAN STILL BE ROTATED BY HAND FOR LATER ALIGNMENT.
6. IT IS SUGGESTED TO CHECK THE FLANGE FOR ELECTRICAL ISOLATION AFTER INSTALLATION OF LOWER BRACKETS, PRIOR TO INSTALLING THE PCR. THIS ISOLATION CHECK IS TYPICALLY DONE WITH A RADIO FREQUENCY ISOLATION TESTER DEVICE FROM THE RE-INSTALLED BOLT TO EACH FLANGE. THE PCR SHOULD BE TESTED SEPARATELY PER DAIRYLAND TESTING RECOMMENDATIONS FOUND AT DAIRYLAND.COM
7. USING THE HARDWARE THAT WAS FURNISHED IN THE PCR TERMINALS, ATTACH A "UPPER" BRACKET TO THE OUTSIDE OF EACH PCR TERMINAL AS SHOWN. APPLY TEFGEL BETWEEN THE MATING SURFACES. PARTIALLY TIGHTEN THE NUTS SO THE "UPPER" BRACKETS CAN STILL BE ADJUSTED FOR FINAL ALIGNMENT.
8. NOTE THE POLARITY LABELS ON THE DEVICE AND INSTALL THE NEGATIVE TERMINAL ON THE MORE ELECTRONEGATIVE SIDE OF THE FLANGE (TYPICALLY THE PIPELINE SIDE OR THE SIDE WITH CATHODIC PROTECTION). THE POSITIVE TERMINAL IS INSTALLED ON THE MORE ELECTROPOSITIVE SIDE OF THE FLANGE (TYPICALLY THE STATION SIDE, THE SKID SIDE, OR GROUNDED SIDE).
9. APPLY TEFGEL ON THE TOP SURFACE OF "LOWER" BRACKET WHERE IT WILL BE IN CONTACT WITH BRACKET "UPPER". PLACE THE PCR WITH ITS ASSEMBLED "UPPER" BRACKETS ON TOP OF THE "LOWER" BRACKETS AND CENTER THE PCR BETWEEN THE FLANGES. INSTALL THE BOLTS, WASHERS AND NUTS PROVIDED WITH THE UFB KIT AS SHOWN AND SEMI-TIGHTEN TO SECURE THE "UPPER" AND "LOWER" BRACKETS TOGETHER.
10. ALIGN ALL BRACKETS AS DESIRED AND THEN TIGHTEN ALL NUTS ON ALL BOLTS. CROSS CHECK THAT ALL NUTS HAVE BEEN SECURELY TIGHTENED AND THAT THE FLANGE BOLT NUT, OR NUTS, HAVE BEEN TORQUED TO THE REQUIRED VALUE.

THIS VIEW APPLIES TO BOTH DRAWINGS (TOP AND BOTTOM)  
 APPLY THIN LAYER OF TEFGEL ON METAL-TO-METAL INTERFACES BEFORE ASSEMBLY  
 1. "LOWER" BRACKET TO FLANGE FACE  
 2. "UPPER" BRACKET TO "LOWER" BRACKET  
 3. "UPPER" BRACKET TO PCR TERMINAL PADS (6 PLACES)



|   |                        |  |                                     |  |
|---|------------------------|--|-------------------------------------|--|
| ASME Y14.5M 2018 APPLIES<br>UNLESS OTHERWISE SPECIFIED DIMENSIONS ARE IN INCHES. COMPUTER-GENERATED DRAWING DO NOT EDIT MANUALLY.   | MATERIAL:<br><b>NA</b> | DRAWN:<br><b>SAB</b>                                   | DATE DRAWN:<br><b>2/14/2022</b>     | <br>P.O. BOX 187<br>STOUGHTON, WI 53589<br>608-877-9900<br>DAIRYLAND.COM |
| .XXX = ±.005"<br>.XX = ±.01"<br>.X = ±.03"<br>ANGLES = ±1°  | FINISH:<br><b>NA</b>   | DWG APPROVAL:<br><b>RJH</b>                            | DATE APPROVAL:<br><b>09/30/2022</b> |  |
| THE INFORMATION CONTAINED IN THIS DRAWING IS THE SOLE PROPERTY OF DAIRYLAND ELECTRICAL INDUSTRIES, INC. ANY REPRODUCTION IN PART OR WHOLE, WITHOUT THE WRITTEN PERMISSION OF DAIRYLAND ELECTRICAL INDUSTRIES, INC. IS PROHIBITED. |                        | <b>TITLE: UFB INSTALLATION WITH PCR - LARGE FLANGE</b> |                                     |  |
| SHEET: <b>5</b> OF <b>5</b>   |                        | DWG SIZE: <b>B</b>                                     | SCALE: <b>1:8</b>                   | REV: <b>B</b> PART #: <b>100146</b>                                      |