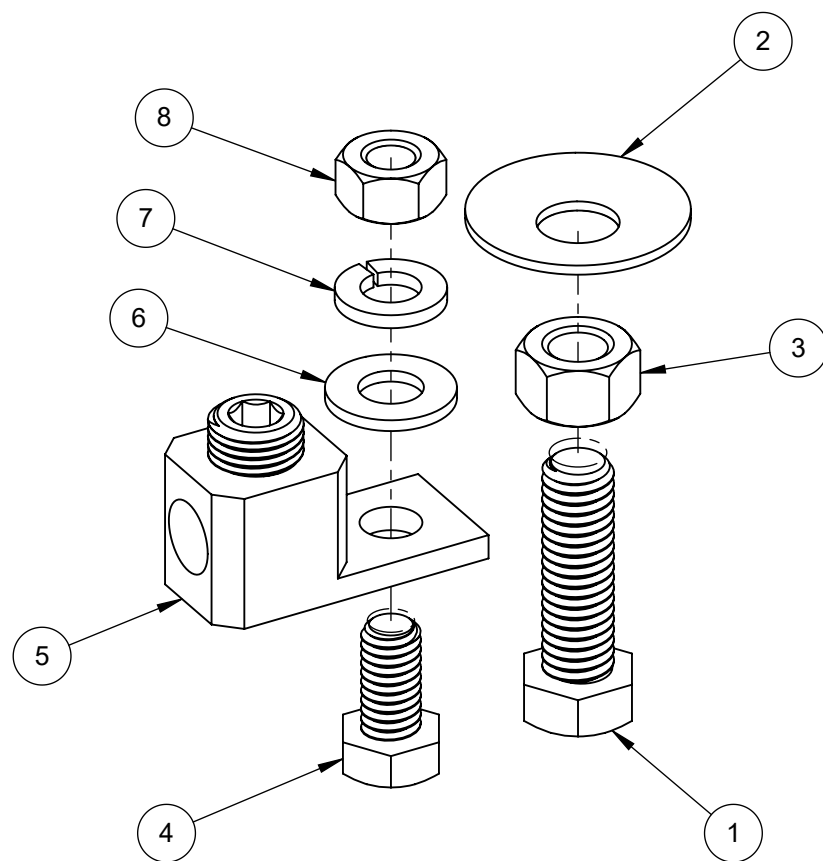
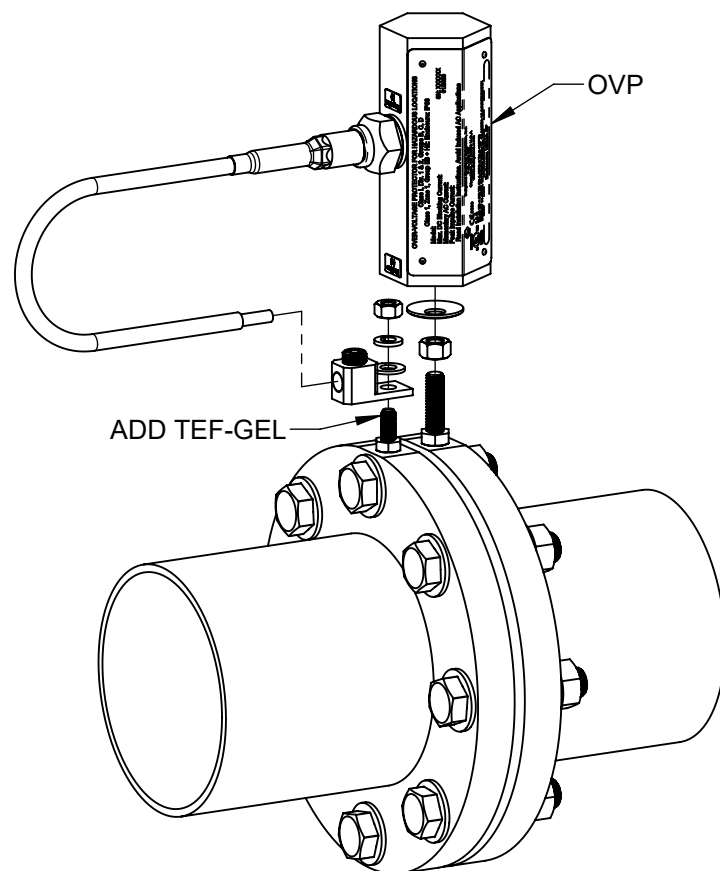
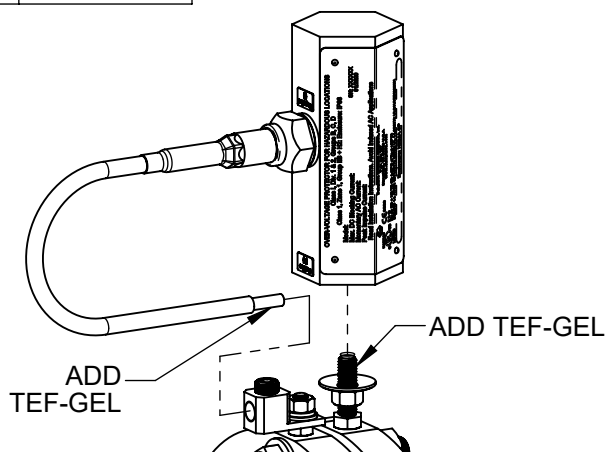


TABULATION

KIT P/N	OVP TAPPED HOLE THREADS	SCREW P/N ①	WASHER P/N ②	NUT P/N ③	SCREW P/N ④	NUT P/N ⑧
2402	3/8	1053	1008	1054	1193	1196
3072	5/16	2272	4582-03	1196	1193	1196
4881	M8	4876-01	4582-03	1200	1199	1200
4882	M10	4876-02	1008	1198	1199	1200

FMWHB INSTALLATION INSTRUCTIONS:

- WELD THE HEADS OF THE 1.25"-LONG OVP BOLT ① AND THE 5/8"-LONG TERMINAL BOLT ④ IN THE CENTER OF EACH FLANGE AS ILLUSTRATED WITH THE AXIS OF EACH BOLT PERPENDICULAR TO THE FLANGE.
- THREAD THE NUT ③ ON THE STUD APPROXIMATELY 5/8" FOLLOWED BY THE COMPRESSION WASHER INSTALLED SO THE OUTSIDE EDGES OF THE WASHER ARE CURVED UPWARD.
- APPLY TEF-GEL CORROSION INHIBITOR ON THE EXPOSED STUD THREADS ABOVE THE WASHER.
- THREAD THE OVP BODY OVER THE STUD ① ~1/2" AND ORIENT THE OVP CABLE EXIT DIRECTION AS DESIRED. THEN TIGHTEN THE NUT ③ FIRMLY AGAINST THE BOTTOM END OF THE OVP BODY
- BEND THE END OF THE LEAD ON THE OVP SO IT IS ADJACENT TO THE TERMINAL STUD ④ AND DETERMINE HOW MUCH OF THE LEAD CAN BE CUT OFF AND STILL ALLOW THE LEAD TO BE CONNECTED TO THIS STUD WHEN THE CONNECTOR IS ATTACHED. CUT OFF THE EXCESS LEAD. (NOTE: FOR BEST OVER-VOLTAGE PROTECTION FROM LIGHTNING, LEADS SHOULD BE KEPT AS SHORT AS POSSIBLE DUE TO THE INDUCTIVE VOLTAGE DROP IN THE LEAD.)
- STRIP ≈3/4" OF INSULATION FROM THE LEAD, APPLY TEF-GEL OVER THE BARE CONDUCTOR AND INSERT INTO THE CONNECTOR. TIGHTEN THE CONNECTOR SET SCREW WITH THE HEX WRENCH PROVIDED TO THE EXTENT FEASIBLE.
- APPLY TEF-GEL OVER THE THREADS OF THE BOLT ④. PLACE THE CABLE TERMINAL OVER THE BOLT FOLLOWED BY A FLAT WASHER, SPLIT LOCK WASHER, AND NUT. TIGHTEN THE NUT FIRMLY WHILE PREVENTING THE CONNECTOR BODY FROM ROTATING. NOW THAT THE CONNECTOR IS SECURED, FURTHER TIGHTEN THE HEX SCREW SECURING THE CONDUCTOR.



ITEM NO.	PART NUMBER	DESCRIPTION	QTY
1	SEE TABULATION	SCREW HEX 1-1/4" LONG	1
2	SEE TABULATION	WASHER COMPRESSION	1
3	SEE TABULATION	NUT HEX 3/8, 5/16, M8, OR M10	1
4	SEE TABULATION	SCREW HEX 5/8" LONG	1
5	3455	TERMINAL BOLTED HEX SOCKET HD #8-1-0	1
6	1194	5/16" FLAT WASHER SMALL OD SST	1
7	1195	WASHER SPLIT LOCK 5/16"	1
8	SEE TABULATION	NUT HEX 5/16 OR M8	1
9	2942	WRENCH ALLEN 1/4" (NOT PICTURED)	1
10	3041	TEF-GEL (NOT PICTURED)	1

ASME Y14.5M 2018 APPLIES  UNLESS OTHERWISE SPECIFIED DIMENSIONS ARE IN INCHES. COMPUTER-GENERATED DRAWING DO NOT EDIT MANUALLY. .XXX = ±.005" .XX = ±.01" .X = ±.03" ANGLES = ±1°	MATERIAL:  <p style="text-align: center;">N/A</p>	DRAWN: <p style="text-align: center;">JPW</p>	DATE DRAWN: <p style="text-align: center;">2014-02-10</p>	 <b>DAIRYLAND ELECTRICAL INDUSTRIES, INC.</b> P.O. BOX 187 STOUGHTON, WI 53589 608-877-9900 DAIRYLAND.COM
	FINISH:  <p style="text-align: center;">N/A</p>	DWG APPROVAL: <p style="text-align: center;">MAD</p>	DATE APPROVAL: <p style="text-align: center;">06/21/2023</p>	
THE INFORMATION CONTAINED IN THIS DRAWING IS THE SOLE PROPERTY OF DAIRYLAND ELECTRICAL INDUSTRIES, INC. ANY REPRODUCTION IN PART OR WHOLE, WITHOUT THE WRITTEN PERMISSION OF DAIRYLAND ELECTRICAL INDUSTRIES, INC. IS PROHIBITED.		SHEET: OF <p style="text-align: center;">1 1</p>	DWG SIZE: SCALE: REV: PART #: <p style="text-align: center;">B 1:1 C 100053</p>	