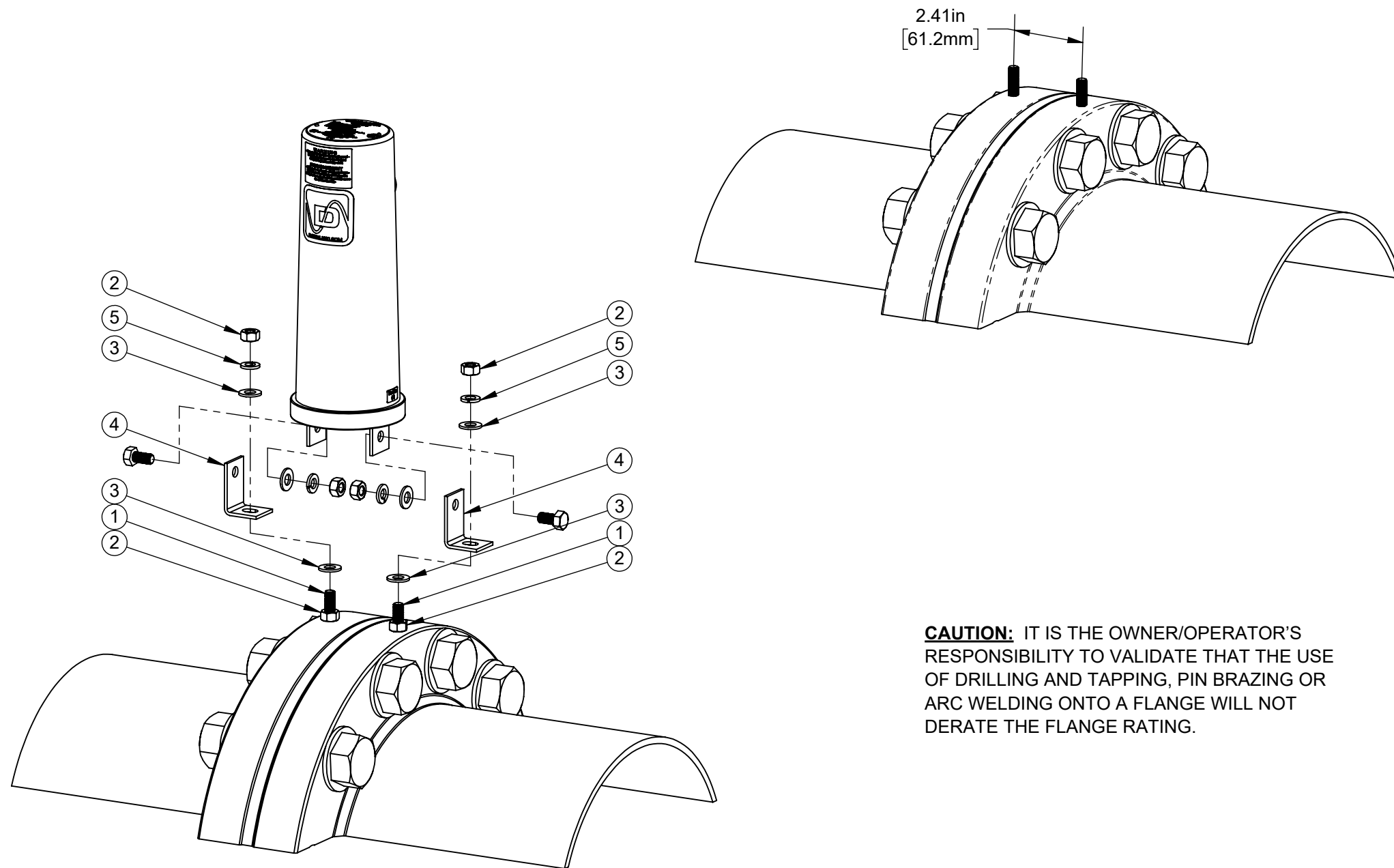


LINE NO.	DOCUMENT NUMBER	DESCRIPTION	QTY.	LINE NO.	DOCUMENT NUMBER	DESCRIPTION	QTY.
1	2516	STUD FULLY THREADED 5/16-18X1.5"	2	1	2517	STUD FULLY THREADED M8-1.25X35MM	2
2	1196	NUT HEX 5/16-18	4	2	1200	NUT HEX M8-1.25	4
3	1194	WASHER FLAT 5/16"	4	3	1194	WASHER FLAT 5/16"	4
4	2513	BRACKET 1 FLANGE MOUNT DECOUPLER PLATED	2	4	2513	BRACKET 1 FLANGE MOUNT DECOUPLER PLATED	2
5	1195	WASHER SPLIT LOCK 5/16"	2	5	1195	WASHER SPLIT LOCK 5/16"	2
6	3041	TEF-GEL	1	6	3041	TEF-GEL	1

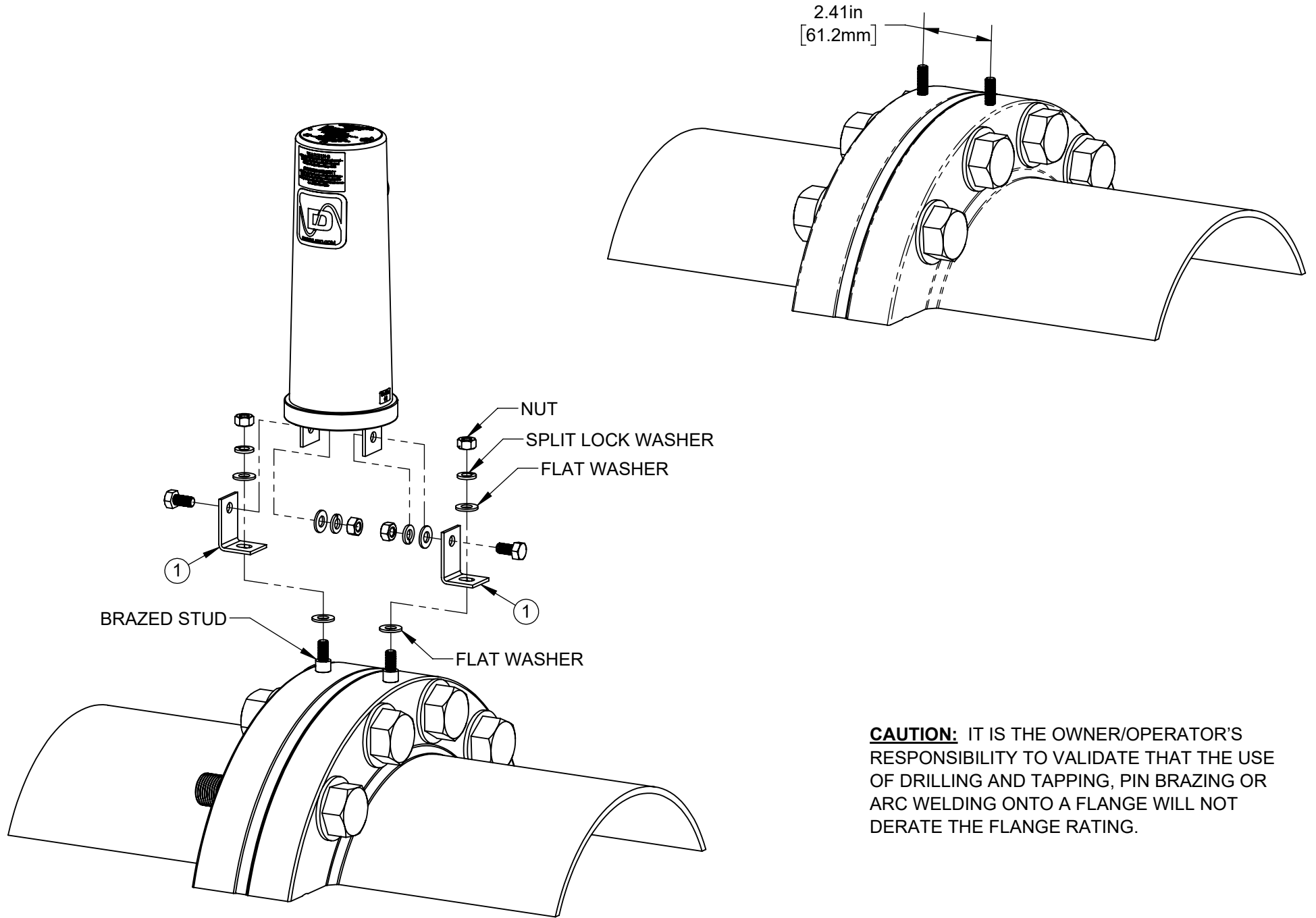
MTT KIT INSTALLATION INSTRUCTIONS:

- CENTER PUNCH MARK THE LOCATIONS FOR THE STUDS AS ILLUSTRATED.
- USE THE APPROPRIATE TAP DRILL SIZE FOR A 5/16 OR M8 STUD DEPENDING ON THE KIT ORDERED AND DRILL A VERTICAL HOLE ON THE TOP OF THE FLANGE $\approx 3/4"$ DEEP ($\approx 19MM$).
- TAP EACH HOLE AND CLEAN OUT THE CHIPS FROM THE TAPPING OPERATION.
- HAND THREAD A NUT ON ONE OF THE STUDS $\approx 5/8"$ FROM THE END, APPLY TEFGEL TO THE THREADS ON THE OTHER END OF THE STUD AND THREAD FULLY INTO EACH TAPPED HOLE. REPEAT FOR THE SECOND STUD.
- PLACE A FLAT WASHER OVER ONE OF THE STUDS FOLLOWED BY A MOUNTING BUS ORIENTED AS ILLUSTRATED, A SECOND FLAT WASHER, A SPLIT LOCK WASHER AND NUT. HAND TIGHTEN THE NUT. REPEAT FOR THE SECOND STUD.
- ASSEMBLE EACH MOUNTING BUS TO THE SSD OR OVP2 TERMINALS AS ILLUSTRATED USING THE TERMINAL HARDWARE PROVIDED IN THE WITH THE PRODUCT.
- IF NECESSARY, ADJUST THE TWO NUTS ON EACH STUD SO THE SSD OR OVP2 IS ORIENTED AS DESIRED AND THEN TIGHTEN ALL FOUR NUTS.
- CENTER MOUNTING STUDS BETWEEN FLANGE BOLT HOLES. FLANGE HOLES SHOULD BE DRILLED AXIALLY TO PIPE CENTER.



ASME Y14.5M 2018 APPLIES 	MATERIAL: NA	DRAWN: JPW	DATE DRAWN: 2014-01-21	 DAIRYLAND ELECTRICAL INDUSTRIES, INC. P.O. BOX 187 STOUGHTON, WI 53589 608-877-9900 DAIRYLAND.COM
UNLESS OTHERWISE SPECIFIED DIMENSIONS ARE IN INCHES. COMPUTER-GENERATED DRAWING DO NOT EDIT MANUALLY.	FINISH: NA	DWG APPROVAL: JSJ	DATE APPROVAL: 03/30/2023	
.XXX = ±.005" .XX = ±.01" .X = ±.03" ANGLES = ±1°	THE INFORMATION CONTAINED IN THIS DRAWING IS THE SOLE PROPERTY OF DAIRYLAND ELECTRICAL INDUSTRIES, INC. ANY REPRODUCTION IN PART OR WHOLE, WITHOUT THE WRITTEN PERMISSION OF DAIRYLAND ELECTRICAL INDUSTRIES, INC. IS PROHIBITED.		TITLE: MTT-516	
SHEET: 1 OF 4		DWG SIZE: B	SCALE: 1:4	REV: C
				PART #: 100049

LINE NO.	DOCUMENT NUMBER	DESCRIPTION	QTY.
1	2513	BRACKET 1 FLANGE MOUNT DECOUPLER PLATED	2
2	3041	TEF-GEL	1



MTS KIT INSTALLATION INSTRUCTIONS

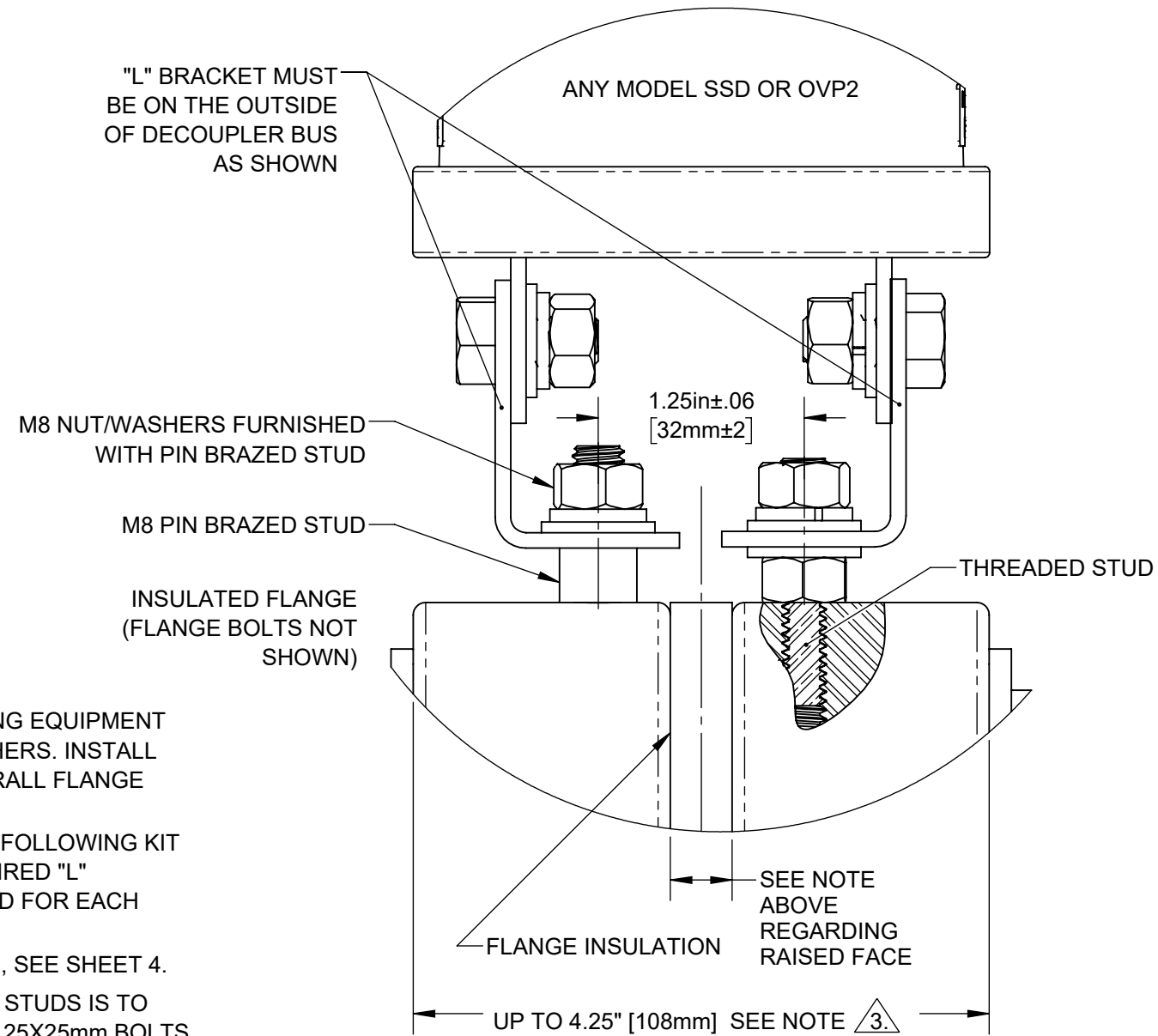
- CENTER PUNCH MARK THE LOCATIONS FOR THE PIN BRAZED STUDS AS ILLUSTRATED.
- PIN BRAZE AN 8mm STUD (USER FURNISHED) OVER EACH PUNCH MARK KEEPING THE STUDS VERTICAL AND PARALLEL TO EACH OTHER.
- PLACE A FLAT WASHER (FURNISHED WITH THE PIN BRAZED STUD) OVER THE THREADED END OF EACH STUD FOLLOWED BY A MOUNTING BUS ORIENTED AS ILLUSTRATED, A SECOND FLAT WASHER, A SPLIT LOCK WASHER AND M8 NUT. HAND TIGHTEN THE NUT. REPEAT FOR THE SECOND STUD.
- ASSEMBLE EACH MOUNTING BUS TO THE SSD OR OVP TERMINALS AS ILLUSTRATED USING THE TERMINAL HARDWARE PROVIDED IN THE WITH THE PRODUCT.
- IF NECESSARY, ADJUST THE TWO NUTS ON EACH STUD SO THE SSD OR OVP2 IS ORIENTED AS DESIRED AND THEN TIGHTEN ALL FOUR NUTS.

CAUTION: IT IS THE OWNER/OPERATOR'S RESPONSIBILITY TO VALIDATE THAT THE USE OF DRILLING AND TAPPING, PIN BRAZING OR ARC WELDING ONTO A FLANGE WILL NOT DERATE THE FLANGE RATING.

ASME Y14.5M 2018 APPLIES 	MATERIAL: NA	DRAWN: JPW	DATE DRAWN: 2014-01-21	 DAIRYLAND ELECTRICAL INDUSTRIES, INC. P.O. BOX 187 STOUGHTON, WI 53589 608-877-9900 DAIRYLAND.COM
UNLESS OTHERWISE SPECIFIED DIMENSIONS ARE IN INCHES. COMPUTER-GENERATED DRAWING DO NOT EDIT MANUALLY.	FINISH: NA	DWG APPROVAL: JSJ	DATE APPROVAL: 03/30/2023	
.XXX = ±.005" .XX = ±.01" .X = ±.03" ANGLES = ±1°		TITLE: MTT-516		
THE INFORMATION CONTAINED IN THIS DRAWING IS THE SOLE PROPERTY OF DAIRYLAND ELECTRICAL INDUSTRIES, INC. ANY REPRODUCTION IN PART OR WHOLE, WITHOUT THE WRITTEN PERMISSION OF DAIRYLAND ELECTRICAL INDUSTRIES, INC. IS PROHIBITED.	SHEET: 2 OF 4	DWG SIZE: B	SCALE: 1:4	REV: C PART #: 100049

OPTION 1: PIN BRAZE M8 STUDS OPTION 2: DRILL/TAP FOR 5/16" OR M8 THREADED STUD

IF THE FLANGE HAS A RAISED FACE, CONFIRM WHETHER ADEQUATE DISTANCE EXISTS BETWEEN THE STUD AND INSIDE EDGE OF FLANGE FOR EITHER MOUNTING OPTION



NOTE:

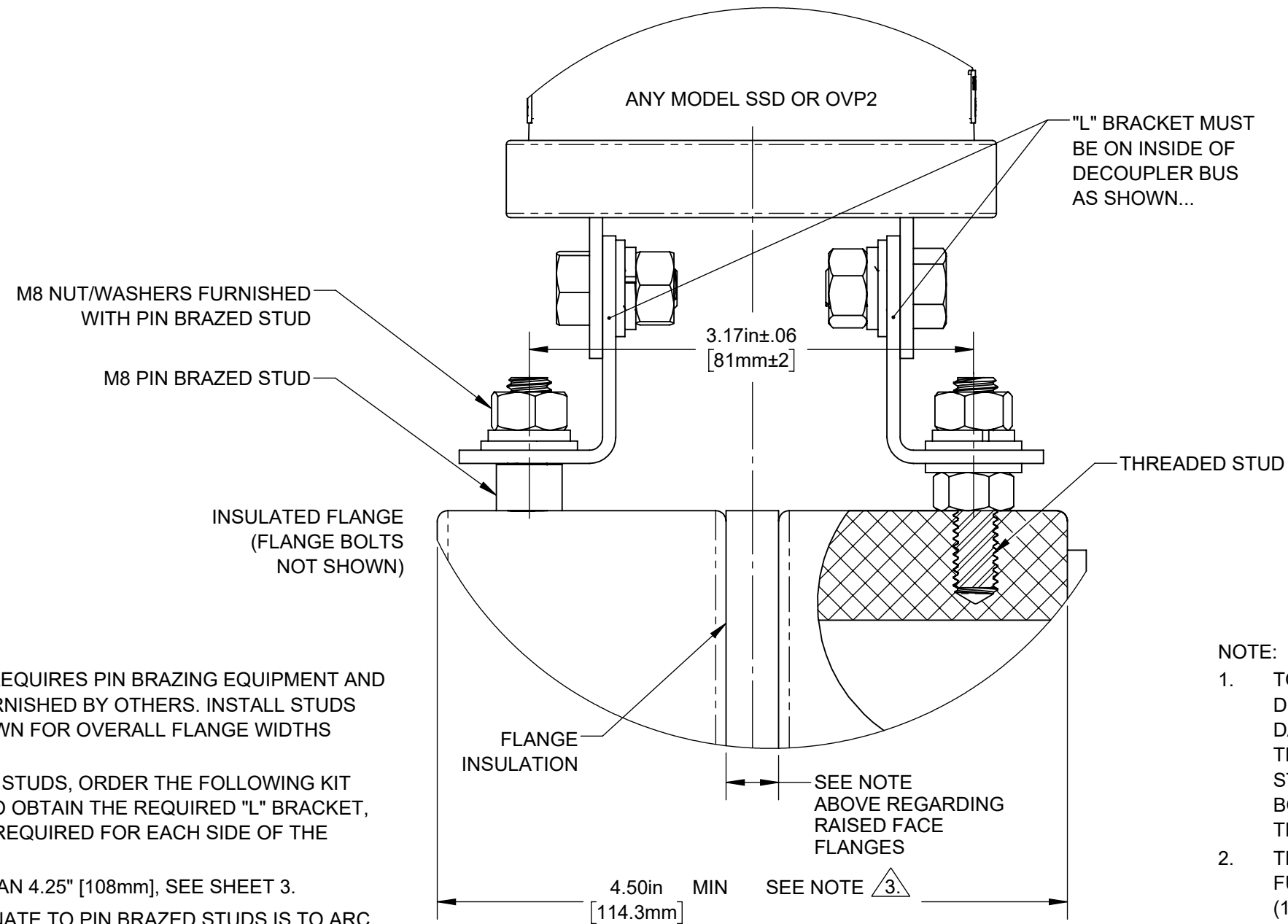
1. THIS INSTALLATION METHOD REQUIRES PIN BRAZING EQUIPMENT AND M8-1.25 THREADED STUDS FURNISHED BY OTHERS. INSTALL STUDS SPACED TO DIMENSIONS SHOWN FOR OVERALL FLANGE WIDTHS UP TO 4.25" [108mm].
2. TO MOUNT USING PIN BRAZED STUDS, ORDER THE FOLLOWING KIT FROM DAIRYLAND, #MTS-M8, TO OBTAIN THE REQUIRED "L" BRACKETS, NUTS, BOLTS, AND WASHERS REQUIRED FOR EACH SIDE OF THE FLANGE.
3. FOR FLANGE WIDTHS GREATER THAN 4.25" [108mm], SEE SHEET 4.
4. A USER IMPLEMENTED ALTERNATE TO PIN BRAZED STUDS IS TO ARC WELD THE HEAD OF TWO 5/16-18X1.0" OR M8-1.25X25mm BOLTS SPACED AS SHOWN.

NOTE:

1. TO MOUNT USING THREADED STUDS IN DRILLED/TAPPED HOLES, THE FOLLOWING KIT FROM DAIRYLAND IS REQUIRED; #MTT-516 FOR 5/16-18 THREADED STUDS OR #MTT-M8 FOR M8-1.25 THREADED STUDS. KIT INCLUDES ALL BRACKETS, NUTS, BOLTS, AND WASHERS FOR EACH SIDE OF THE FLANGE.
2. THE REQUIRED TAP DRILL AND TAP ARE TO BE USER FURNISHED. DRILL AND TAP FOR FULL THREADS 1/2" [12.5mm] DEEP.

ASME Y14.5M 2018 APPLIES UNLESS OTHERWISE SPECIFIED DIMENSIONS ARE IN INCHES. COMPUTER-GENERATED DRAWING DO NOT EDIT MANUALLY.	MATERIAL:	DRAWN: JPW DATE DRAWN: 2014-01-21	 DAIRYLAND ELECTRICAL INDUSTRIES, INC. P.O. BOX 187 STOUGHTON, WI 53589 608-877-9900 DAIRYLAND.COM
	FINISH: NA	DWG APPROVAL: JSJ DATE APPROVAL: 03/30/2023	
.XXX = ±.005" .XX = ±.01" .X = ±.03" ANGLES = ±1°	TITLE: MTT-516		THE INFORMATION CONTAINED IN THIS DRAWING IS THE SOLE PROPERTY OF DAIRYLAND ELECTRICAL INDUSTRIES, INC. ANY REPRODUCTION IN PART OR WHOLE, WITHOUT THE WRITTEN PERMISSION OF DAIRYLAND ELECTRICAL INDUSTRIES, INC. IS PROHIBITED.
SHEET: 3 OF 4 DWG SIZE: B SCALE: 1:4 REV: C PART #: 100049			

OPTION 1: PIN BRAZE M8 STUDS
 OPTION 2: DRILL/TAP FOR 5/16" OR M8 THREADED STUD



NOTE:

1. THIS INSTALLATION METHOD REQUIRES PIN BRAZING EQUIPMENT AND M8-1.25 THREADED STUDS FURNISHED BY OTHERS. INSTALL STUDS SPACED TO DIMENSIONS SHOWN FOR OVERALL FLANGE WIDTHS GREATER THAN 4.25" [108mm].
2. TO MOUNT USING PIN BRAZED STUDS, ORDER THE FOLLOWING KIT FROM DAIRYLAND, #MTS-M8 TO OBTAIN THE REQUIRED "L" BRACKET, NUTS, BOLTS, AND WASHERS REQUIRED FOR EACH SIDE OF THE FLANGE.
3. FOR FLANGE WIDTHS LESS THAN 4.25" [108mm], SEE SHEET 3.
4. A USER IMPLEMENTED ALTERNATE TO PIN BRAZED STUDS IS TO ARC WELD THE HEAD OF TWO 5/16-18X1.0" OR M8-1.25X25mm BOLTS SPACED AS SHOWN.

NOTE:

1. TO MOUNT USING THREADED STUDS IN DRILLED/TAPPED HOLES, THE FOLLOWING KIT FROM DAIRYLAND IS REQUIRED; #MTT-516 FOR 5/16-18 THREADED STUDS OR #MTT-M8 FOR M8-1.25 THREADED STUDS. KIT INCLUDES ALL BRACKETS WITH NUTS, BOLTS, AND WASHERS; REQUIRED FOR EACH SIDE OF THE FLANGE.
2. THE REQUIRED TAP DRILL AND TAP ARE TO BE USER FURNISHED. DRILL AND TAP FOR FULL THREADS 1/2" (12.5mm) DEEP.

ASME Y14.5M 2018 APPLIES UNLESS OTHERWISE SPECIFIED DIMENSIONS ARE IN INCHES. COMPUTER-GENERATED DRAWING DO NOT EDIT MANUALLY.	MATERIAL:	DRAWN: JPW	DATE DRAWN: 2014-01-21	 DAIRYLAND ELECTRICAL INDUSTRIES, INC. P.O. BOX 187 STOUGHTON, WI 53589 608-877-9900 DAIRYLAND.COM		
	FINISH: NA	DWG APPROVAL: JSJ	DATE APPROVAL: 03/30/2023			
.XXX = ±.005" .XX = ±.01" .X = ±.03" ANGLES = ±1°	TITLE: MTT-516		SHEET: OF 4 4	DWG SIZE: SCALE: B 1:4	REV: C	PART #: 100049
THE INFORMATION CONTAINED IN THIS DRAWING IS THE SOLE PROPERTY OF DAIRYLAND ELECTRICAL INDUSTRIES, INC. ANY REPRODUCTION IN PART OR WHOLE, WITHOUT THE WRITTEN PERMISSION OF DAIRYLAND ELECTRICAL INDUSTRIES, INC. IS PROHIBITED.						