

For certain insulated joint applications, the Weld Tab Mounting option is desirable where welding to the flange is permitted (user determined) because this minimizes lead length and maximizes over-voltage protection due to lightning. This option is limited to the following PCR models that utilize standard terminals: PCR-3.5KA, PCR-3.7KA, PCR-5KA, PCR-9KA, PCR-10KA. (If this option is desired for any other model, contact DEI.)

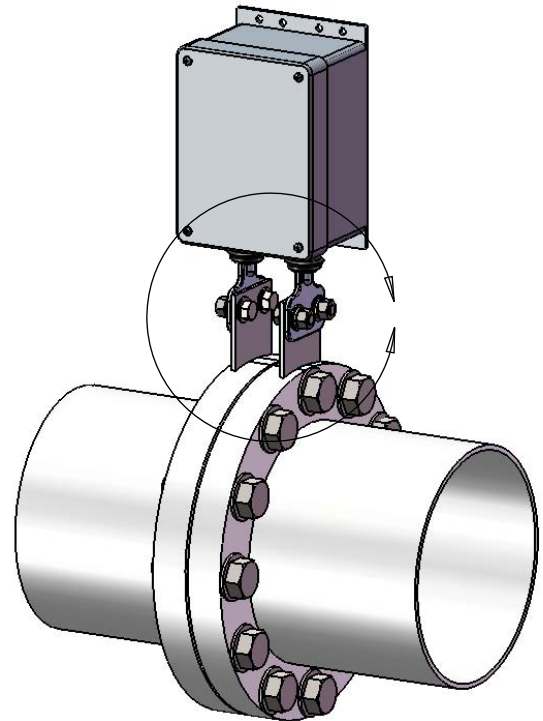
Order part code (WTM) - along with PCR model number listed above. The channel bracket, normally furnished with a PCR, will be omitted as it is not used when this option is provided.

Specifications:

Material: Carbon Steel

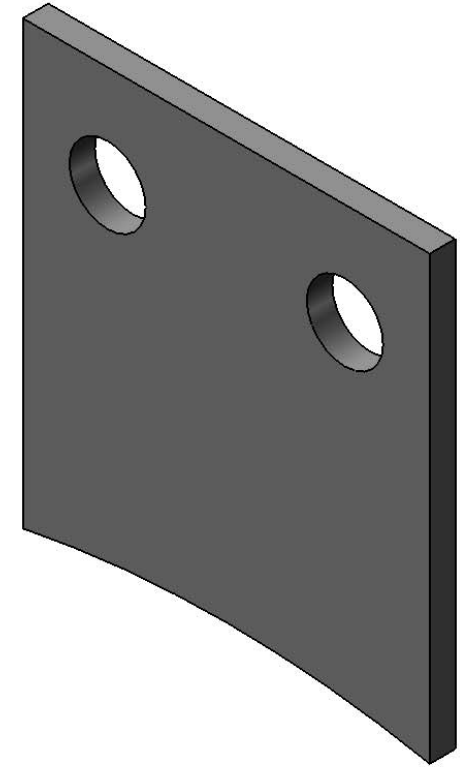
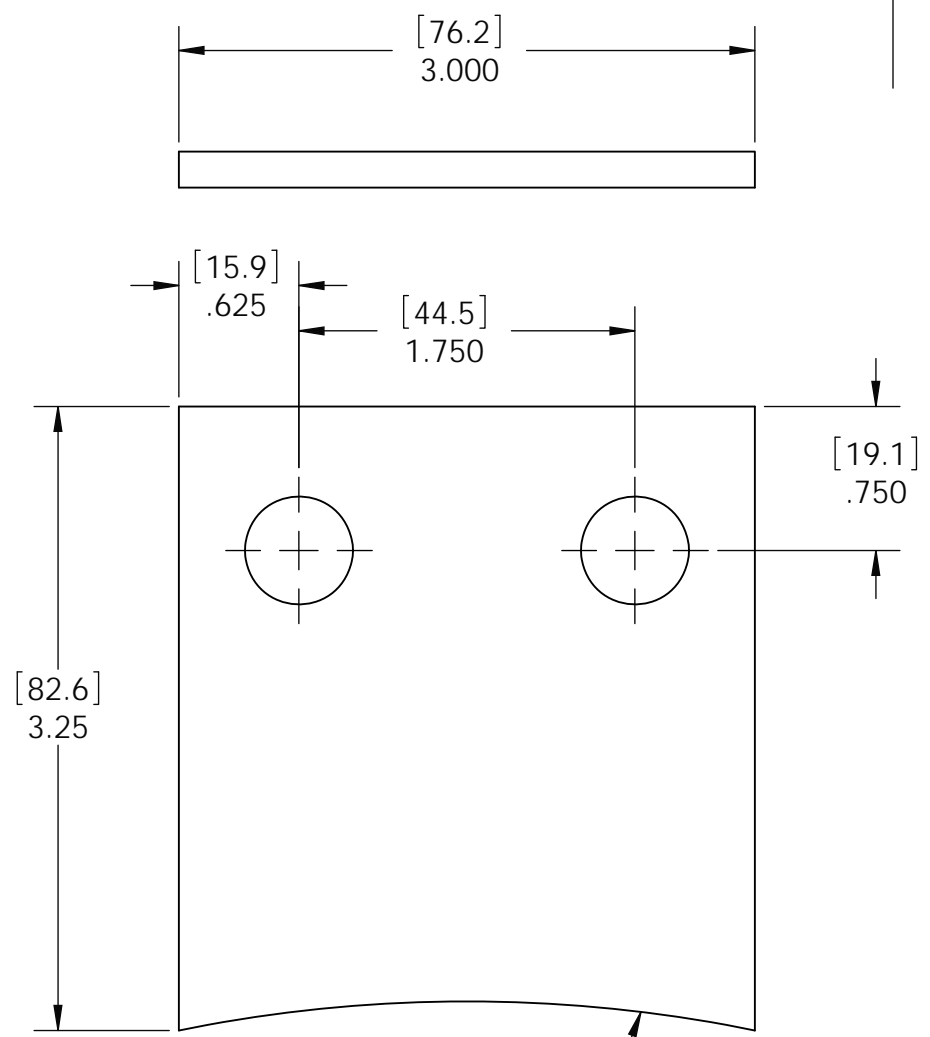
Plating: Nickel

Thickness: 3/16"



REVISIONS

REV	DESCRIPTION	DATE	APPROVED
-----	-------------	------	----------



MATERIAL: NICKEL PLATED CARBON STEEL

PROVIDED WITHOUT RADIUS, USER TO CREATE DESIRED RADIUS AT INSTALLATION



TITLE				WELD TAB	
SIZE	DATE	DWG NO.	DBA		
A	6/23/2008	WELD TAB			
SCALE	1:1	DRAWN: BWC	SHEET	1 OF 1	