

DEI Accessories

Vault Enclosure

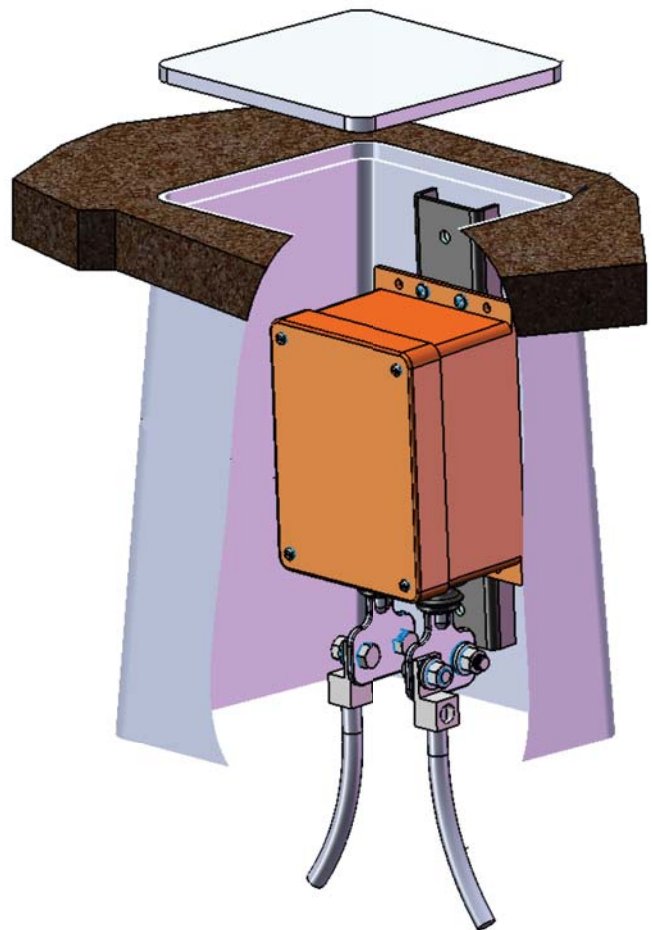
In some applications, it is desirable to install the decoupler below grade. A heavy-walled polyethylene enclosure is available to enclose and protect the decoupler when it is located below grade. The vault is available in 12" x 12" or 24" x 24" sizes and comes with a polymer concrete load-bearing cover.

Specifications:

Material: Polyethylene

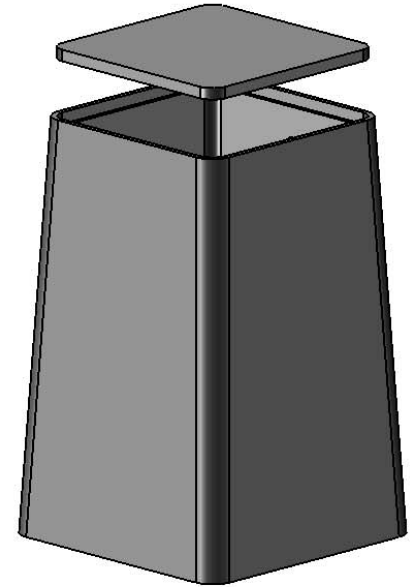
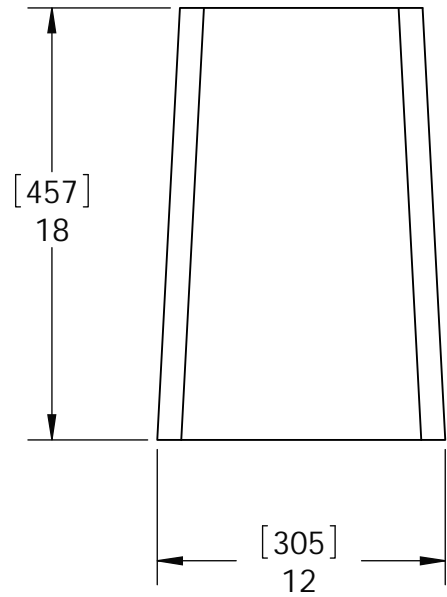
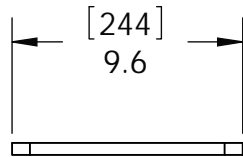
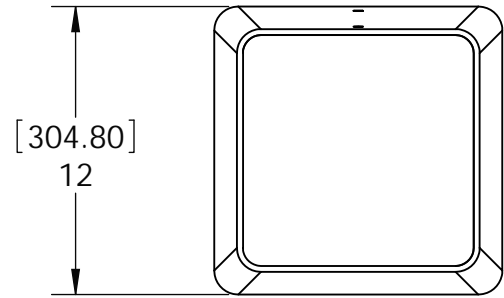
Size: 12" x 12" or 24" x 24"

Lid: Polymer Concrete load-bearing cover up to 20,000 wheel loading pounds (12" x 12") or 15,000 wheel loading pounds (24"x24")



REVISIONS

REV	DESCRIPTION	DATE	APPROVED
-----	-------------	------	----------



TITLE				BURIED VAULT DIMENSIONS			
SIZE	DATE	DWG NO.	ASSEMBLY			DBA	
A	6/24/2008						
SCALE	1:8	DRAWN: BWC	SHEET	1 OF 1			