

DEI Accessories

Adaptor Plates

Where a PCR or PCRH is mounted adjacent to an insulated flange, the Adapter Plate kit can aid in connection to the flange. The Adapter Plate attaches to the flange using one of the flange bolts, and connects to the DEI decoupler using a flexible insulated conductor (supplied separately). The adapter plate has a factory-assembled bolted-type cable lead connector that accepts 2/0 to 4/0 AWG (70 to 120mm²) conductor with a flange bolt hole size specified by the user. Specify model AP-"D" where "D" is the user specified bolt diameter in inches or mm.

Note: The kit is supplied with two adapter plates - one for each side of the flange. By specifying a bolt diameter, the resulting Adapter Plate hole diameter will be an increase of 0.125" to allow for the insulating sleeve over the bolt and for clearance. If a different clearance is needed over the bolt diameter, please advise.

Ideally, the insulating sleeve over the bolt, and the bolt to which the adapter plates are attached, should be 1/4" (6.4 mm) longer than the other sleeves/bolts to account for the thickness of two adapter plates. Most manufacturers of insulated joint kits can provide one different length bolt and insulating sleeve in an insulation kit upon request.

Specifications:

Metal Type: Copper

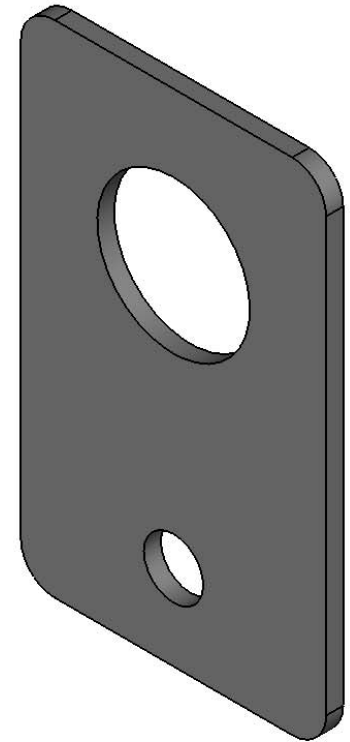
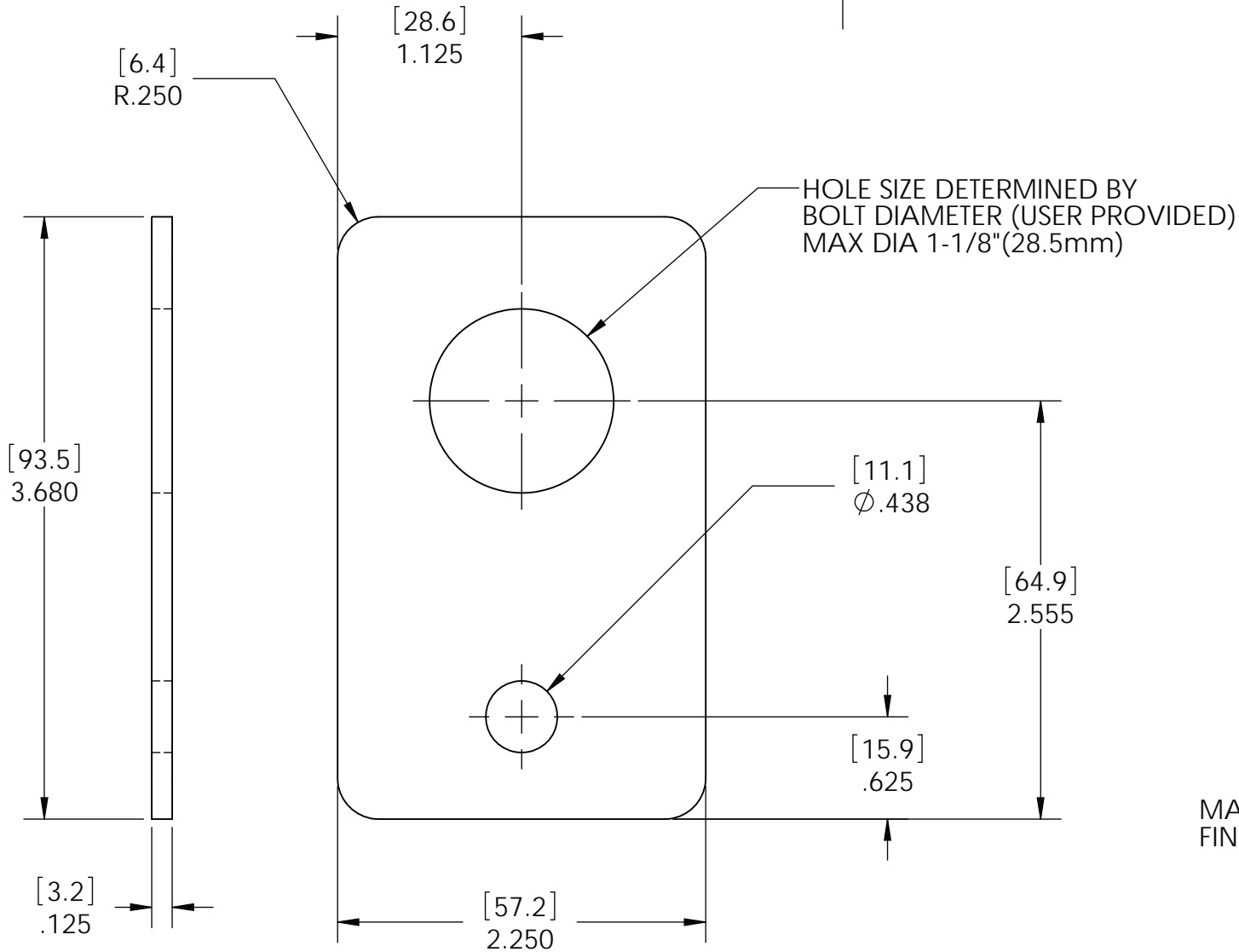
Plating: Nickel Electroplated

Thickness: .125"



REVISIONS

REV	DESCRIPTION	DATE	APPROVED
-----	-------------	------	----------



MATERIAL: COPPER
FINISH: Nickel Electroplated



TITLE				ADAPTER PLATES	
SIZE	DATE	DWG NO.	DBA		
A	7/1/2008	PCR-067	1922		
SCALE	1:1	DRAWN: BWC	SHEET 1 OF 1		