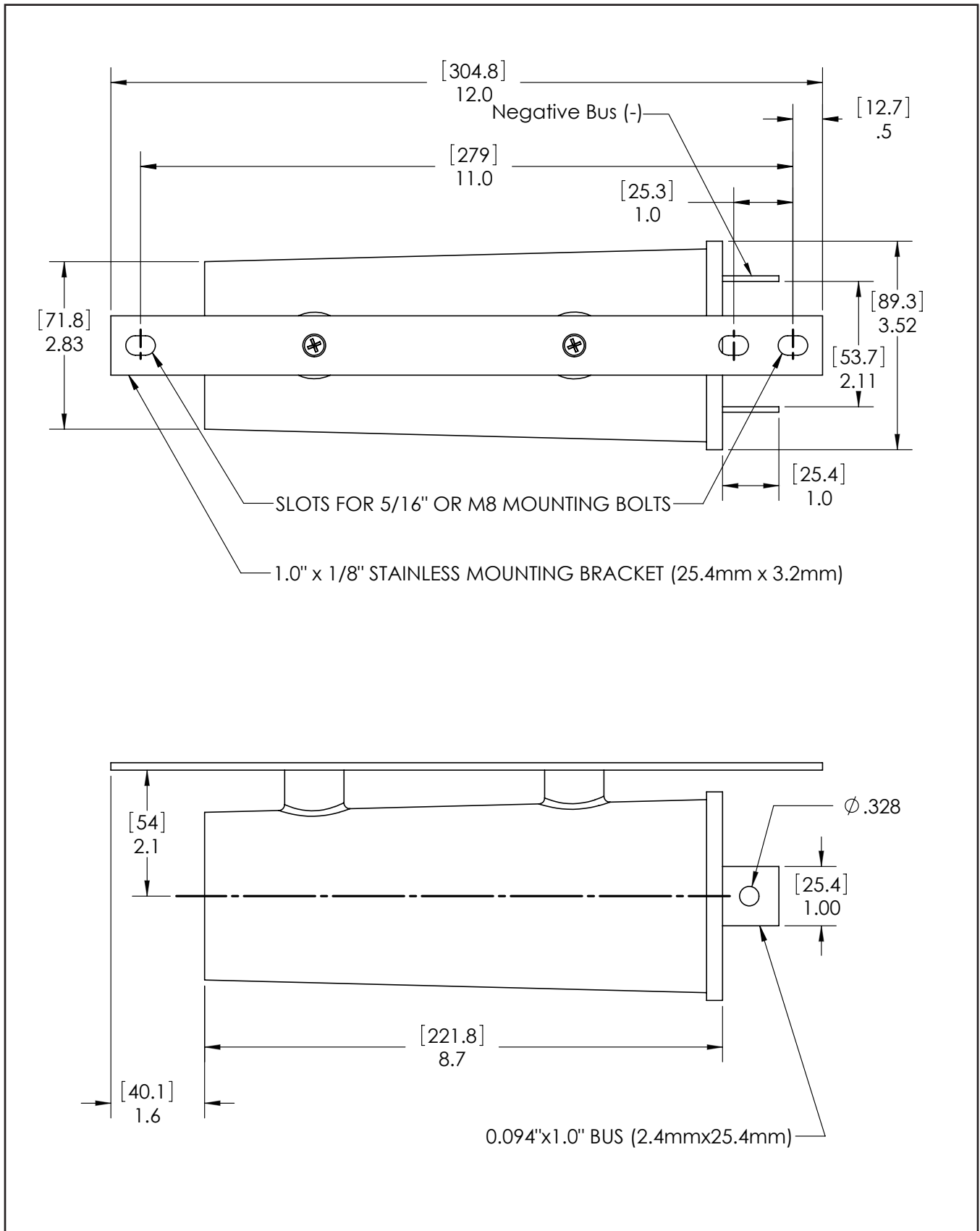
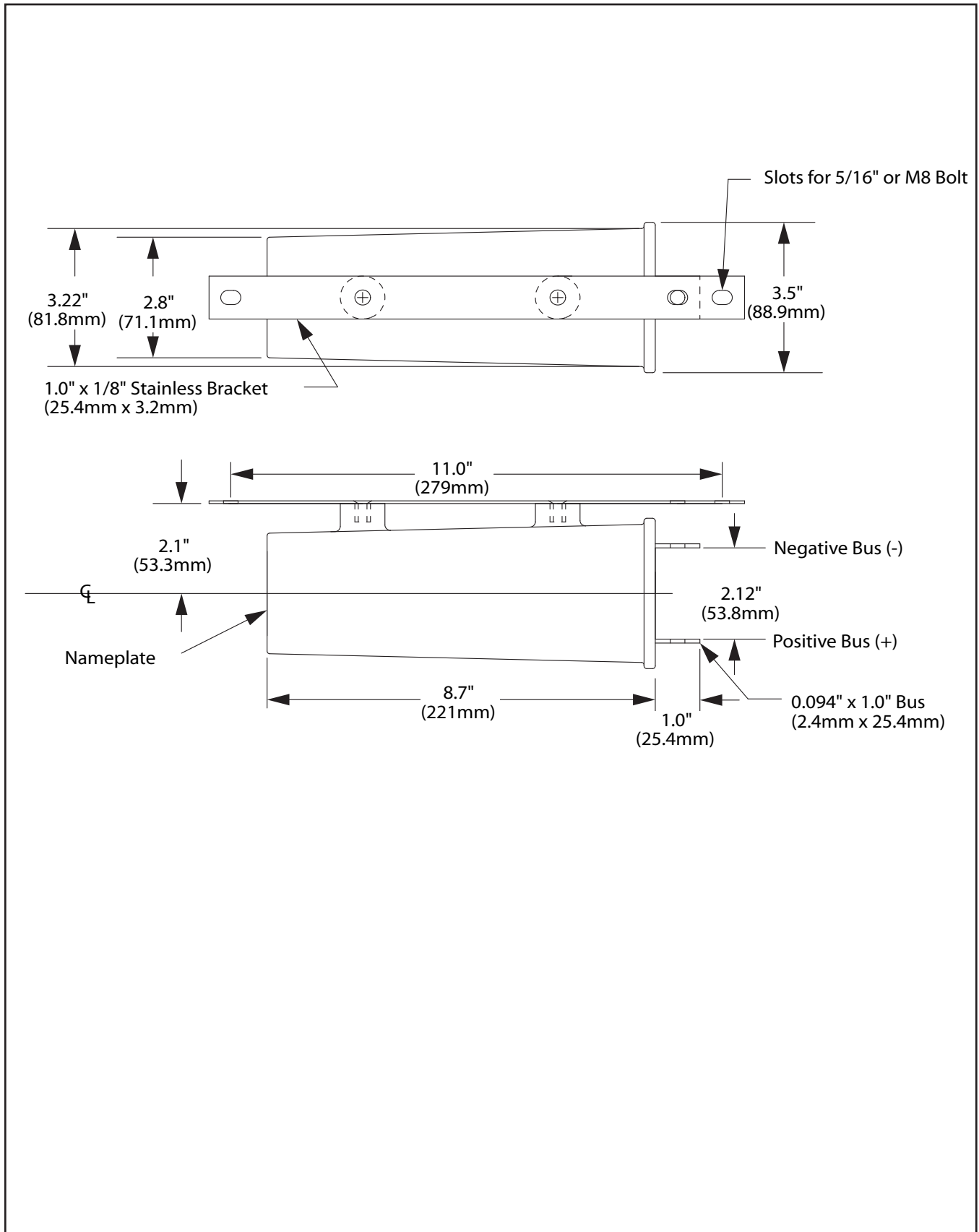


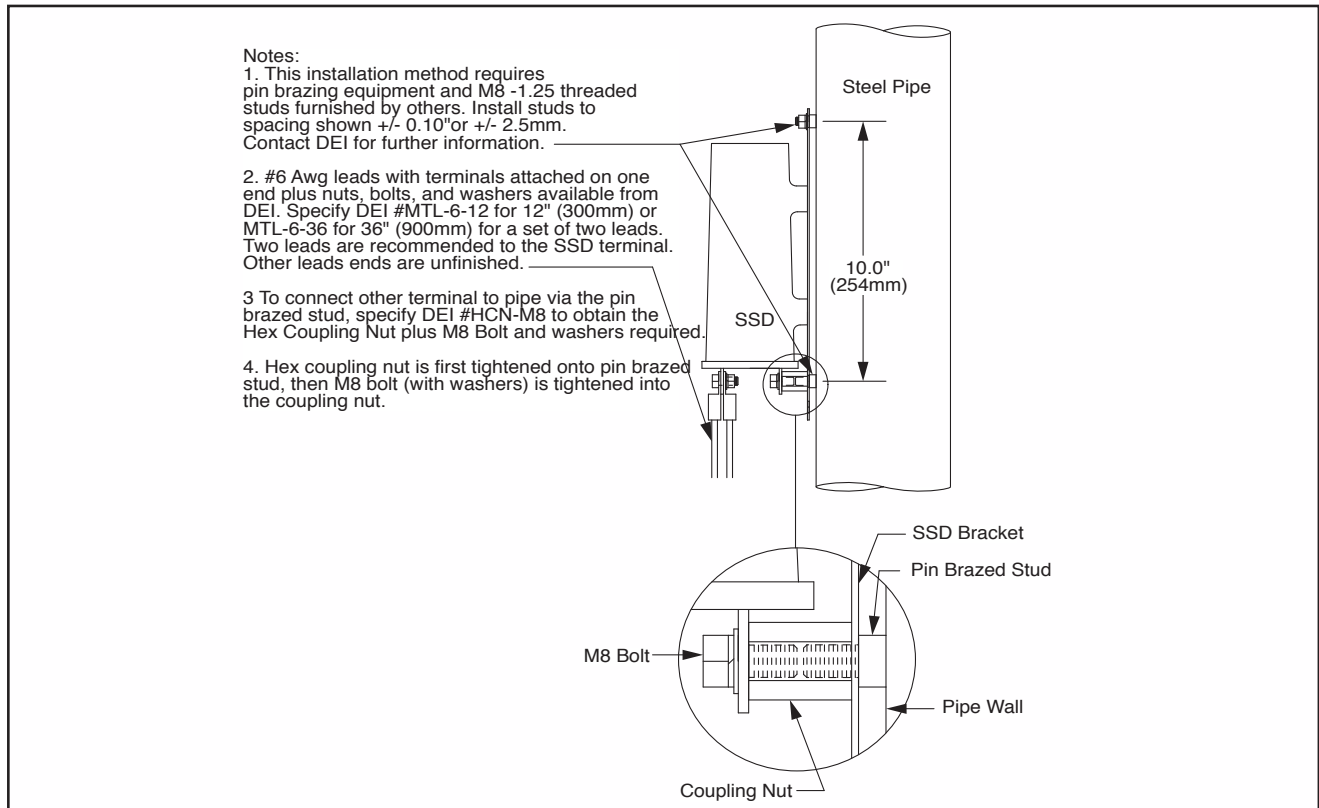
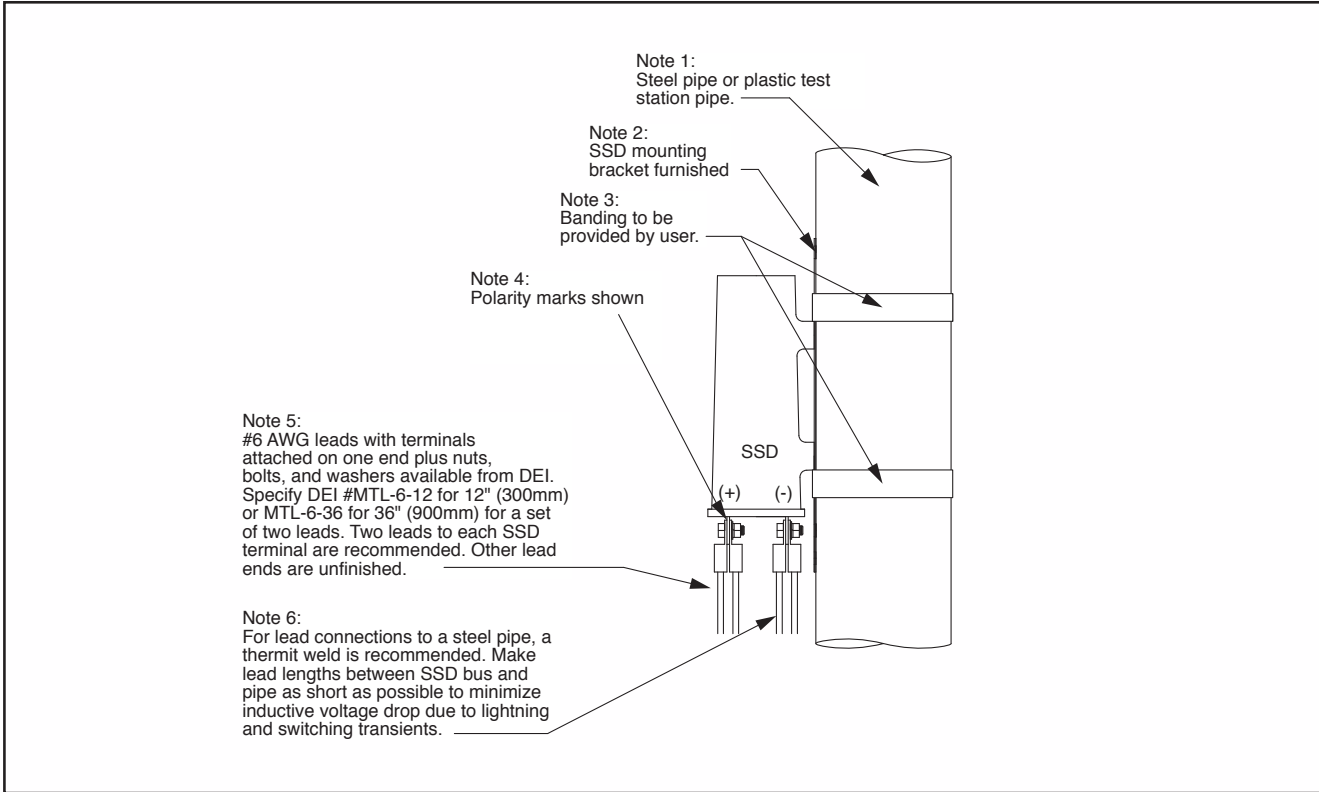
**FIGURE 1** SSD Outline Drawing (Standard Terminal Arrangement)



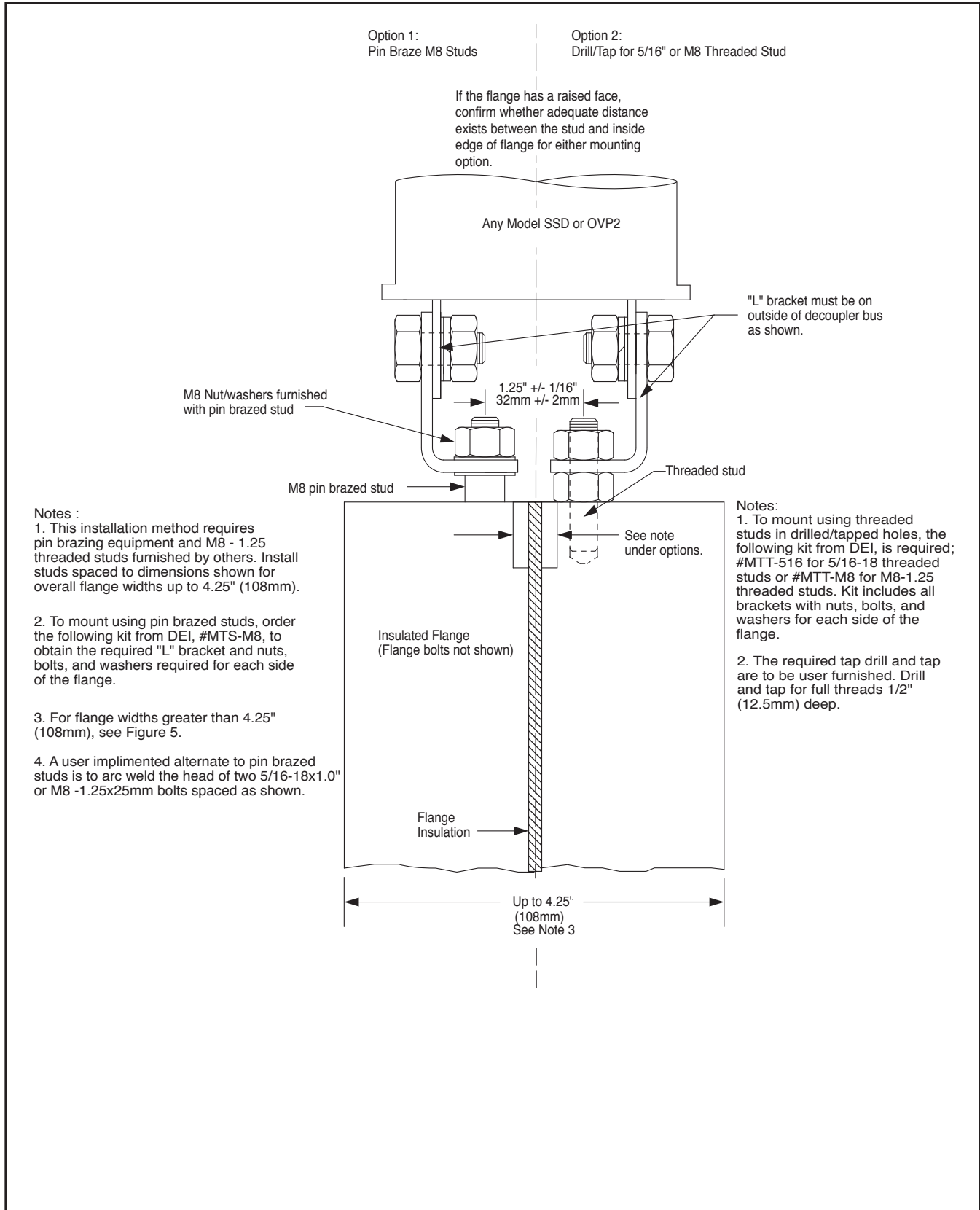
**FIGURE 2** SSD Outline Drawing (Optional Terminal Arrangement)



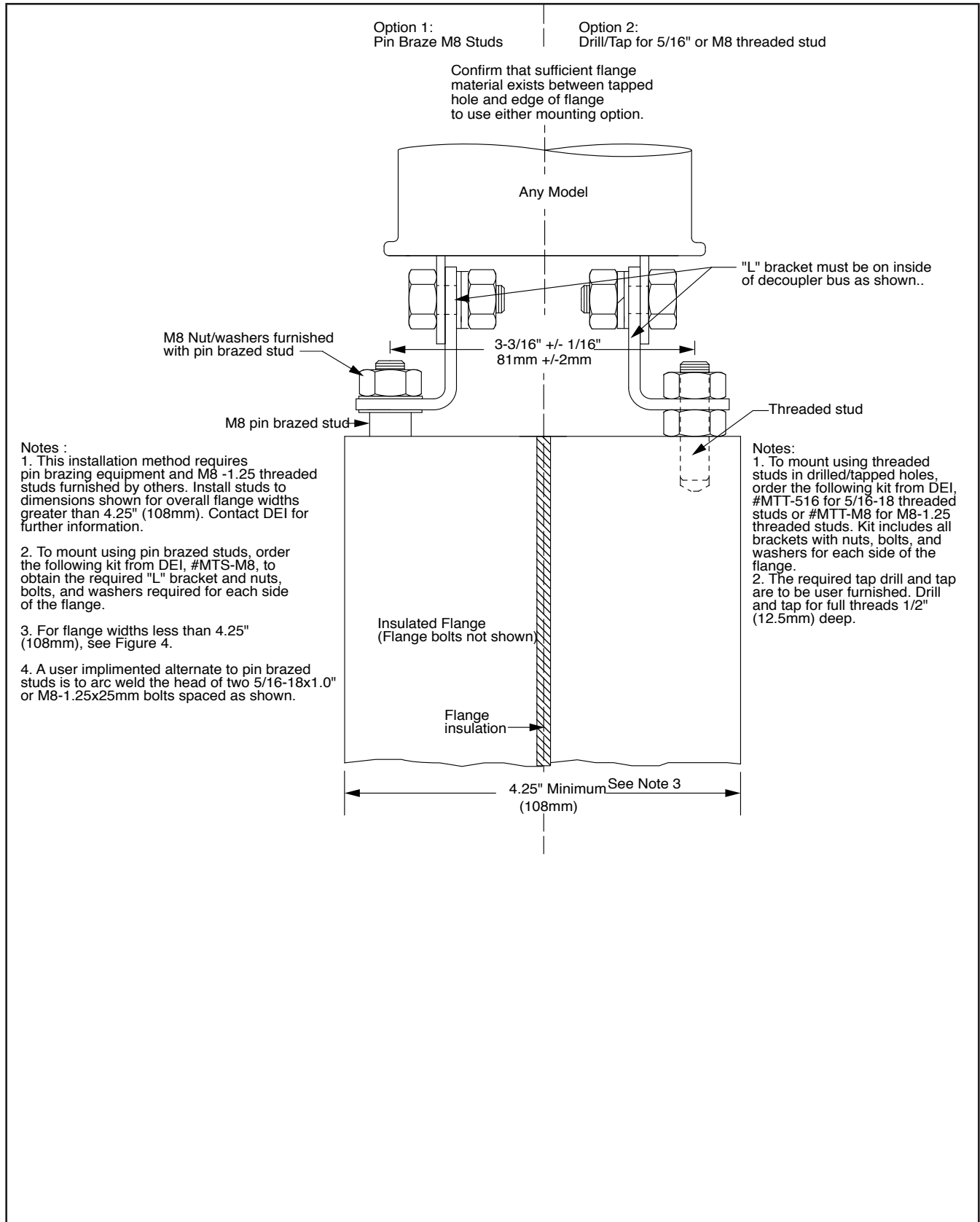
**FIGURE 3** Banding the SSD to a Test Station or Pipe Wall



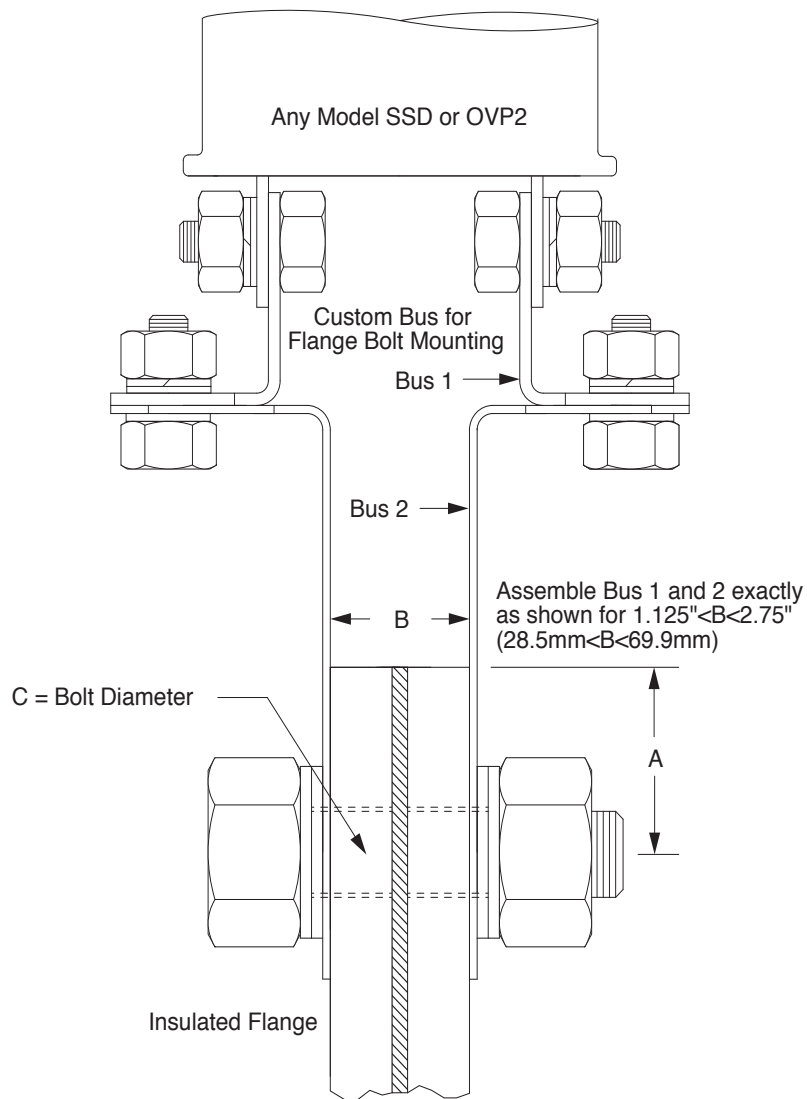
**FIGURE 5** Flange Mount Using Tapped Holes or Pin Brazed Studs



**FIGURE 6** Flange Mount Using Tapped Holes or Pin Brazed Studs



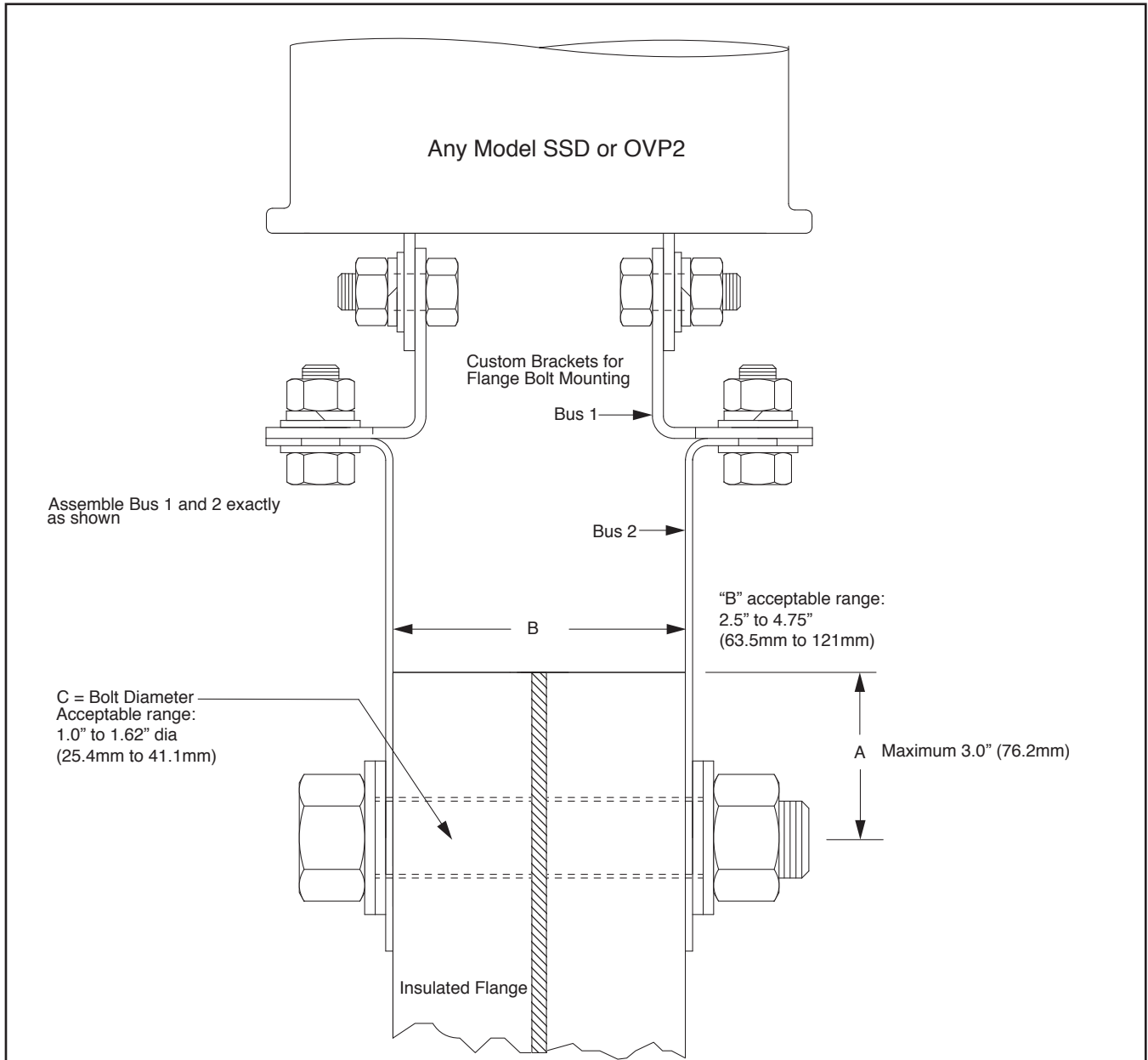
**FIGURE 7A** Flange Mount Using Existing Flange Bolts



**Installation Instructions:**

1. This specific assembly arrangement is for flange bolt mounting where A is less than 2.0" and B is between 1.125" and 2.75" and C = .5" to 1".
2. If the product model purchased has symmetrical voltage blocking (e.g. OVP2-2/2----) versus an asymmetrical blocking voltage (e.g. OVP2-3/1----) then polarity is irrelevant and either terminal can go to either side of the flange. If the voltage blocking is asymmetrical, then the (-) labeled terminal should go to the more negative side of the flange.
3. Apply a thin film of the corrosion inhibitor provided between all mating surfaces prior to assembly.
4. Loosely assemble Bus 1 and 2 as shown and orient product as desired, then tighten all nuts to secure in place.

**FIGURE 7B** Flange Mount Using Existing Flange Bolts



Assemble Bus 1 and 2 exactly as shown

C = Bolt Diameter  
Acceptable range:  
1.0" to 1.62" dia  
(25.4mm to 41.1mm)

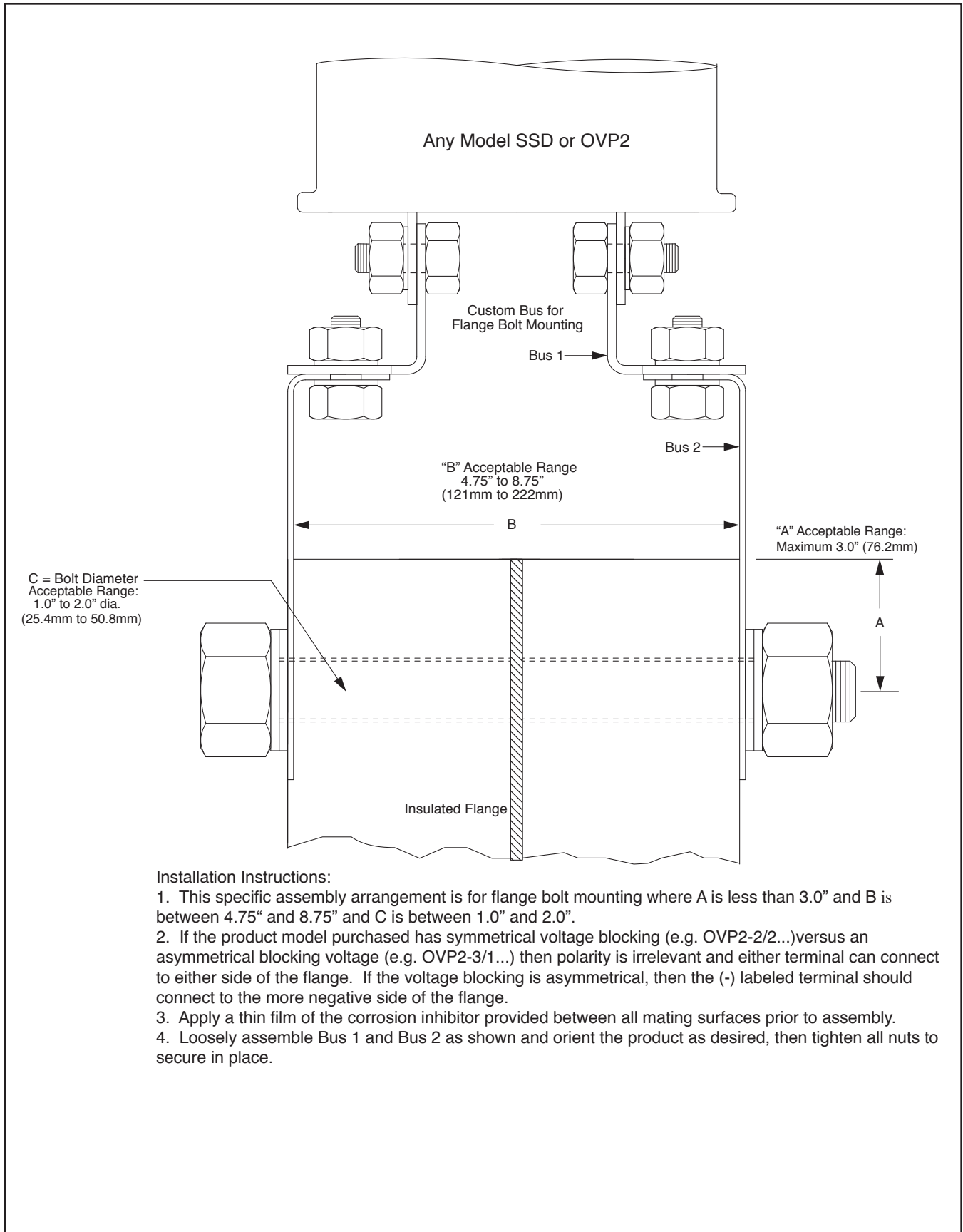
"B" acceptable range:  
2.5" to 4.75"  
(63.5mm to 121mm)

A Maximum 3.0" (76.2mm)

**Installation Instructions:**

1. This specific assembly arrangement is for flange bolt mounting where "A" is less than 3.0" and "B" is between 2.5" and 4.75" and "C" is between 1.0" and 1.62".
2. If the product model purchased has symmetrical voltage blocking (e.g. OVP2-2/2...) versus an asymmetrical blocking voltage (e.g. OVP2-3/1...) then polarity is irrelevant and either terminal can connect to either side of the flange. If the voltage blocking is asymmetrical, then the (-) labeled terminal should connect to the more negative side of the flange.
3. Apply a thin film of the corrosion inhibitor provided between all mating surfaces prior to assembly.
4. Loosely assemble Bus 1 and Bus 2 as shown and orient the product as desired, then tighten all nuts to secure in place.

**FIGURE 7C** Flange Mount Using Existing Flange Bolts



**Installation Instructions:**

1. This specific assembly arrangement is for flange bolt mounting where A is less than 3.0" and B is between 4.75" and 8.75" and C is between 1.0" and 2.0".
2. If the product model purchased has symmetrical voltage blocking (e.g. OVP2-2/2...) versus an asymmetrical blocking voltage (e.g. OVP2-3/1...) then polarity is irrelevant and either terminal can connect to either side of the flange. If the voltage blocking is asymmetrical, then the (-) labeled terminal should connect to the more negative side of the flange.
3. Apply a thin film of the corrosion inhibitor provided between all mating surfaces prior to assembly.
4. Loosely assemble Bus 1 and Bus 2 as shown and orient the product as desired, then tighten all nuts to secure in place.