

Mounting the SSD or OVP2 to a flange can be accomplished via drilling and tapping the edge of the flange for a 5/16-18x1" or M8-1.25x20mm fully-threaded stud with jam nuts, or by pin brazing an M8x16 stud to each flange. Verify that the dimensions of either of these mounting arrangements are suitable for the flange before ordering. For mounting using tapped holes and studs, specify DEI part number MTT-516 for the 5/16" threaded studs, or MTT-M8 for the M8 threaded studs.

If mounting via pin brazed studs is desired, mount the device by using a M8x16 stud pin brazed to each side of the flange. The MTS kit provided by DEI includes "L" brackets, nuts, bolts, washers for each side of the flange. DEI does not supply the M8 stud kit or ceramic sleeve needed for this installation. Please order these parts from the manufacturer/distributor of the pin brazing equipment being used.

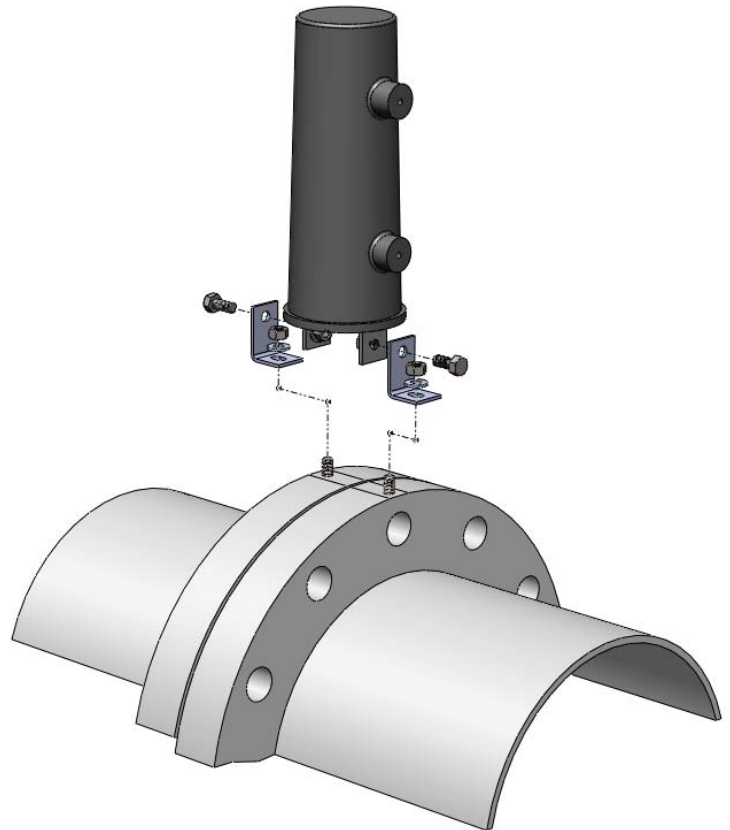
Note: Verify that the dimensions for this mounting arrangement are suitable for the flange before ordering.

### Specifications

Material: #110 Copper

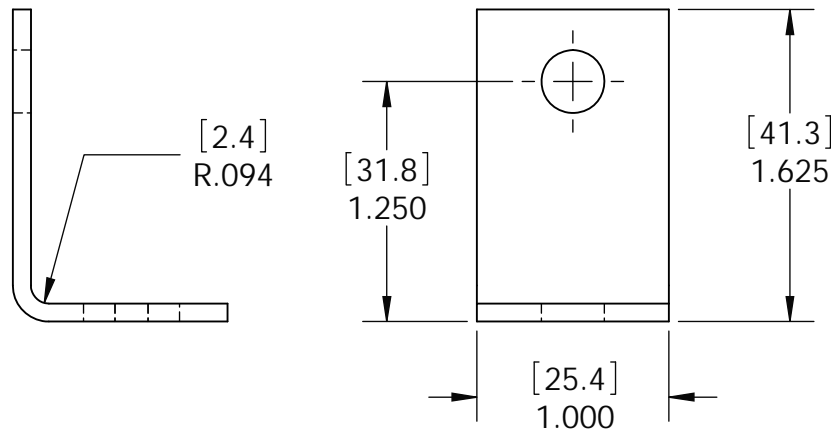
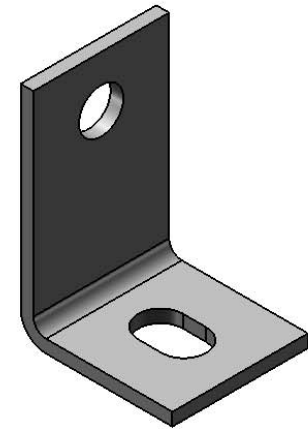
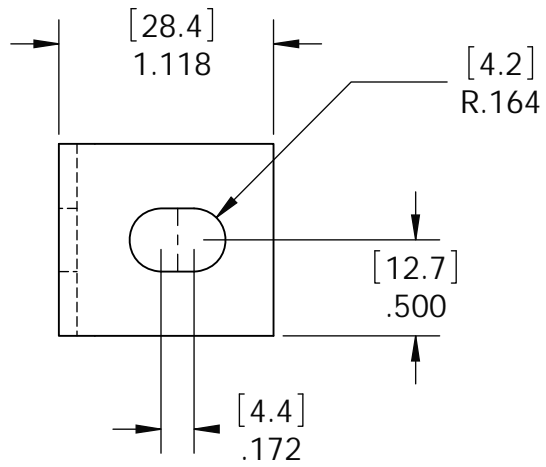
Finish: Nickel Electroplated

Thickness: .094"



REVISIONS

REV	DESCRIPTION	DATE	APPROVED
-----	-------------	------	----------



TITLE				PIN BRAZED STUD BRACKET			
SIZE	DATE	DWG NO.		DBA			
A	7/17/2008	D-020-P1		2512		2513	
SCALE	1:1	DRAWN: BWC		SHEET		1 OF 1	